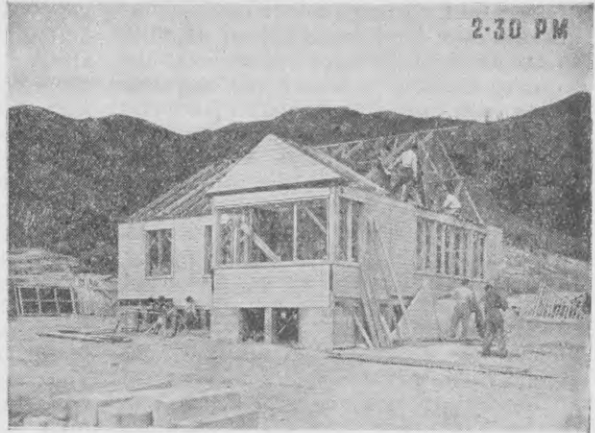


10. Another roof-truss coming up. A start has already been made on the hip covering the front sun-porch. Note that the main prefabricated trusses continue straight through regardless of the hip. This gives extra strength to the main gable.



11. The trusses are all up and the first end piece has gone up. The two men on the left of the sun-porch are putting on the lower weatherboards where the bottom of the panel joins the flooring.



12. The exterior shell complete, including entrance porches at side and rear, with the first priming coat applied at the factory. Erection time, including the foundations, was fifteen hours.

