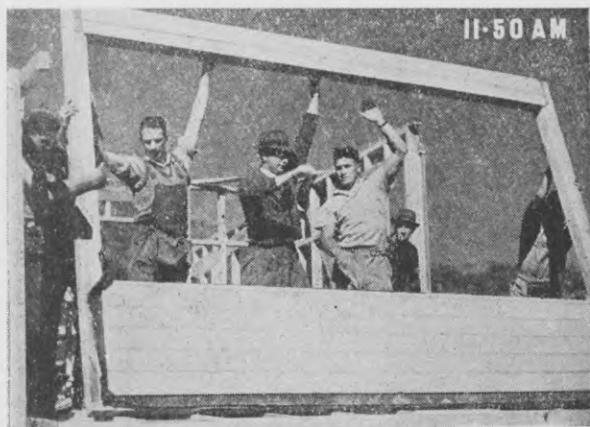
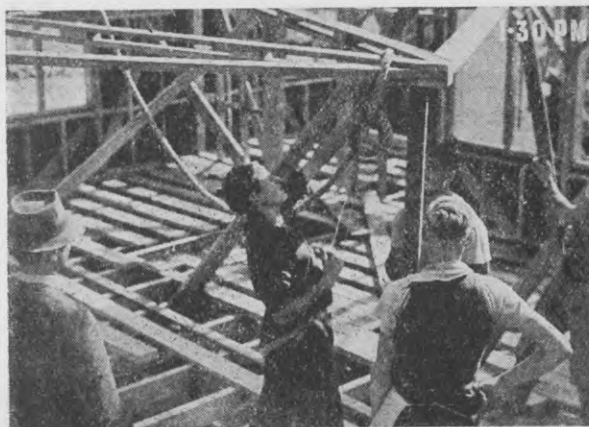


7. The outer shell is complete except for the sun-porch panel. You can see the joins where the panels meet. These will be covered with battens.



8. "Up she goes!" The last exterior panel—the front of the sun-porch—is placed in position sixty-five minutes after the truck arrived.



9. Here we see how the roof-trusses are pushed up one by one until the seventeen comprising the main gable are in position.