

## WELLINGTON CLUBS FOR MEN IN CAMP

**AIR FORCE RELATIONS**  
Cnr. MULGRAVE & AITKEN STS.  
(Above Lambton Tram Terminus).  
10 a.m. to 5 p.m. Daily.  
Not open on Saturdays or Sundays.

**ARMY, NAVY, AIR FORCE**  
33 WILLIS ST.  
Monday to Thursday 10 a.m. to 10 p.m.  
Fridays ..... 10 a.m. to 11 p.m.  
Saturdays .... 10 a.m. to 11.30 p.m.  
Sundays ..... 10 a.m. to 9.30 p.m.

**BRITISH SAILORS' SOCIETY**  
138 WAKEFIELD STREET.  
Daily: 9 a.m. to 11 p.m.  
Saturday, 9 a.m. to 12 Noon,  
5.30 to 11 p.m.  
Sunday, 3 p.m. to 10.30 p.m.

**CATHOLIC SERVICES CLUB**  
126 CUBA STREET  
(Between Woolworths and  
Ghuznee Street).  
Friday Nights from 7 p.m.  
Saturdays from 1 p.m.  
Sundays all day from 10 a.m.

**COMBINED SERVICES  
HOSTEL.**  
33 SYDNEY STREET  
Open Continuously.

**NATIONAL CLUB.**  
166 FEATHERSTON STREET.  
(Diagonally opposite G.P.O.)  
10 a.m. to 10.30 p.m. Daily  
Saturdays and Sundays inclusive.

### GAINING IMPETUS Capital's Club, Hostel And Home Hospitality

Wellington service clubs, both in the city itself and in the suburbs, were as busy and crowded as usual this weekend. Servicemen and women alike gathered at the various centres to enjoy the hospitality provided. Energetic entertainment committees and helpers who serve in an entirely voluntary capacity, sometimes devoting time to cafeteria duty or the dispensing of hundreds of meals every week, gave estimable assistance, and made their guests genuinely welcome. Now that the weather has become more promising, several enterprising clubs have arranged weekend swimming and picnic parties, in addition to visits to local parks and reserves for sports and organized outdoor games.

Men of all the services, including the Merchant Navy, were taken for outings yesterday, returning, in most cases, to the clubrooms for teas and concerts. Menus have also been affected, and salads, cold meat and sweets have been substituted for some of the hot dishes popular throughout the winter.

Donations of food or flowers for the tables are always acceptable at the service clubs.

Hospitality for servicemen and women spending leave in Wellington is also extending to the home. Last week citizens helped appreciably in response to an appeal made by a hostel severely taxed for overnight accommodation, and took the surplus number of men into their homes for the weekend.

The New Zealand-America Friendship Group, which operates the Home Hospitality Bureau, as well as arranging hospitality in Wellington homes for an evening, places convalescent men from a United States services hospital in homes for the weekend, and as many as 100 in a weekend have been so placed during the past months, though during the last fortnight, because of movement in the hospital, few have been available. This work is under the direction of Mrs. J. W. Innes, whose enthusiasm has largely fostered its success. Besides locating the homes, the bureau, under the direction of Miss Yvonne Vickery, secretary, and Mrs. Beale, and a rota of willing helpers, continues its task of introducing servicemen to Wellingtonians, and hundreds of home friendships have been formed through this agency. Immediately on the arrival of any of our allies, they are met by the chairman of the group, Major J. R. Kirk, M.B.E., and given full information as to the hospitality awaiting them from the various clubs, so that when they enter the city they already feel welcome. Over the Christmas season, there may be many servicemen who would benefit by home contacts, and the bureau (telephone 44-711) would value invitations from further householders willing to assist.

**SALVATION ARMY  
SOLDIERS' INSTITUTE.**  
Railway Station, opp. No. 9 Platform  
Mondays to Thursdays 9 a.m. to 9.30 p.m.  
Fridays and Saturdays, 9 a.m. to 12 Midnight.  
Sunday, 10 a.m. to 11.30 p.m.

**WEBBY'S DANCE CLUB**  
61 LOWER CUBA STREET  
(Just above Bruce Woollen Depot, next to James Smith's)  
Fridays ..... 7.0 p.m. to 11.30 p.m.  
Saturdays ..... 7.0 p.m. to 11.30 p.m.  
Sundays ..... 2.30 p.m. to 9.30 p.m.

**Y.M.C.A.**  
150 WILLIS STREET.  
9 a.m. to 12 Midnight Daily.  
Saturdays and Sundays inclusive.

**VICTORY CLUB.**  
68 WILLIS STREET  
(Over J. R. McKenzie's)  
ADMISSION: 6d.  
Open every Saturday evening to all members of the Fighting Services.  
**MODERN & OLD TIME DANCING**  
7.30 a.m. - Midnight.  
Excellent Supper.

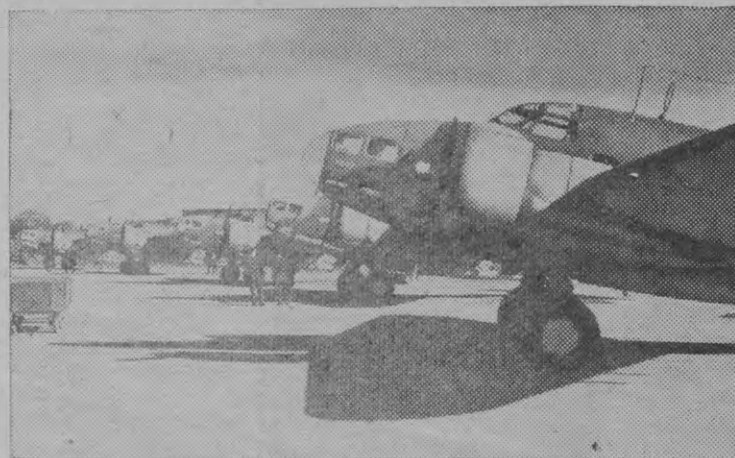
**Y.W.C.A.**  
5 BOULCOTT STREET.  
Saturdays ..... 3 p.m. to 11 p.m.  
Sundays ..... 3 p.m. to 9 p.m.

### FINE SPECTACLE Trooping The Colour BIG CROWD GATHERS

More than 15,000 spectators gathered at Athletic Park yesterday afternoon for the spectacular Trooping the Colour arranged by the Wellington Patriotic Committee. The turnstiles were unable to deal quickly enough with the big crowd of people which arrived outside the park about the advertised time of starting, 2.30 o'clock, and consequently, to avoid disappointment, a few minutes before 3 o'clock the main gates were opened and the remainder poured into the ground.

The United States Marine Corps Band, under the command of Captain Leon Brusiloff, received an ovation as it played the Lower Hutt interhouse girls' teams on to the ground.

A mobilization camp band followed the Marine band and interhouse girls, playing on a detachment of the Women's War Service Auxiliary, which gave an excellent display of precision movement. Then came the Band of the Royal New Zealand Air Force, leading the colour parties of the Women's Auxiliary Air Force, with units of the Air Training Corps, including the armed escort for the colours. Behind the A.T.C. were the girls of the Red Cross Women's Transport.



MORE BOMBERS FOR THE R.A.F.—Hudsons, flown non-stop from Newfoundland to England by Empire Air Training crews.

## Everyman's Hut

God of the granite and the rose!  
Soul of the sparrow and the bee!  
The mighty tide of being flows,  
Through countless channels, Lord,  
from thee.

It leaps to life in grass and flowers,  
Through every grade of being runs;  
Till, from creation's radiant towers,  
Its glory flames in stars and suns.

Know that, like birds, and streams,  
and flowers,  
The life that moves you is divine;  
Nor time, nor space, nor human  
powers,  
Your god-like spirit can confine.

God of the granite and the rose!  
Soul of the sparrow and the bee!  
The mighty tide of being flows,  
Through all thy creatures, back to  
thee.

Thus round and round the circle runs,  
A mighty sea without a shore;  
While men and angels, stars and suns,  
Unite to praise thee evermore.  
—L. Doten.

### Interesting Items.

With all the contingents on the ground, the Stars and Stripes flag was borne out before the stand and the Marine Band played the "Star Spangled Banner." A musical march by the interhouse girls, accompanied by the same band, followed.

In the meantime the R.N.Z.A.F. Band and the Camp Band massed, and at the conclusion of the marching display, did a ceremonial march. It was explained to the audience by Flight Lieutenant Gladstone Hill, the commander of the R.N.Z.A.F. Band, who acted as announcer and master of ceremonies, that the reason why the Marine Corps Band did not play with the other two bands was a difference in pitch in their instruments. The two New Zealand bands played to the higher pitch of 540 C, while the United States band was tuned to a 522 C. A few bars of "Colonel Bogey" played by the three bands together soon convinced that their massing was not very tuneful.

While the R.N.Z.A.F. Band, with the W.A.A.F.'s colour parties, the A.T.C. armed escort, the other A.T.C. units and the Red Cross Women's Transport unit were moving into position for the chief item of the afternoon's programme, the camp band, under Captain Pike, kept the audience interested with two marches.

### Trooping the Colour.

The ceremonial Trooping the Colour was excellently and punctiliously carried out. It was organized by Mr. A. D. Lynch, of Napier. The parade, in three sides of a square, advanced toward the stand from the far side of the ground in perfect formation. At either side were the A.T.C. units, with the armed escorts at the rear of each line. The R.N.Z.A.F. Band formed the centre of the back line, with the Red Cross Transport girls each side of it. Within the square, slightly in advance of the back line, were the four colour parties of W.A.A.F.'s, bearing, from left to right, the Australian, United States, British (Union Jack), and New Zealand flags. The parade came to the halt before the centre of the stand.

From beneath the stand emerged four girls in bright uniforms after the type of the Guards, and wearing bushies. They advanced to positions facing the spaced colour parties. Then, in order, the United States, Australian, New Zealand and British colours were transferred to them, with precise ceremony, by the W.A.A.F. bearers. The four girls, also specially visiting Well-

When I gaze into the blue depths of the summer sky, or watch from the edge of the cliffs the cloud-shadows chasing one another over the fertile plain, or, far below the great sweep of purple heather, see the lake asleep beneath the sun, I see God, as it were, clad in His vesture of material loveliness.

Charles Beard.

God comes to us through every manifestation of life and power and beauty of which we can dream. . . . He is closer to us than the air we breathe, closer to us than the thoughts we think; for He is the element in which we live and move and have our being. . . . If you hold in your hand a rose and admire its fragrance, its tinting, its beauty, God looks out of it into your face.—Minot J. Savage.

### YOUR KODAK SNAPS!

Leave your Films for developing and printing at Everyman's Hut.

### KODAK SERVICE

The sight of the first pale flowers starring the copses; an anemone held up against the blue sky with the sun shining through it towards you; . . . who that has felt the joy of these things would exchange them, even if in return he were to gain the whole world with its chimney-pots, and bricks, and dust, and dreariness? And we know that the gain of a world never yet made up for the loss of a soul.—From The Solitary Summer.

### EVERYMAN'S THOUGHT FOR THE WEEK.

Flowers preach to us if we will hear.  
—Christino Rosetti.

ton from Napier, were Miss Coral Parmer (captain), Union Jack; Miss Kitty Stowell, Australia; Miss Merle Greenway, United States; and Miss Charlotte Parata, New Zealand.

Following the trooping between the opened front and rear lines of the three sides of the square, the whole parade ceremonially marched past the stand, the mayor of Wellington, Mr. Hislop, taking the salute.

### Mayor's Thanks.

With the parade drawn up before the stand, Mr. Hislop voiced the thanks of the Wellington Patriotic Committee to all who had worked to make the entertainment such a great success, and also the people of Wellington for the large attendance.

"By your showing here," the mayor said to the spectators, "you must be congratulated in demonstrating that you will not let down the men overseas."

In paying a tribute to the Marine Corps band, he said that by the warmth of their reception of the band spectators had shown their appreciation of it, and also of all the other Americans they had got to know so well.

Flight Lieutenant Gladstone Hill added a tribute from New Zealand bandmen. Wherever their paths might lead them in the time to come they would always be remembered here.

An item by the Marines Band, and the R.N.Z.A.F. Band's ceremonial "V" march brought the programme to an end.

### NOTICE TO ADVERTISERS.

Instructions as to the insertion or withdrawal of advertisements in the "Camp News" must be in writing. Advertisements received without such instructions will be inserted until countermanded and charged accordingly.

Alterations to standing advertisements should be handed in by 12 noon each Monday.

While every care is exercised in regard to the insertion of advertisements, the Proprietors do not hold themselves responsible for errors or non-insertion through accident or from other causes.

All business communications should be addressed to the Manager. Letters to the Editor, News Items, etc., to the Editor.

We cannot be held responsible for errors in advertisements transmitted by telephone.

STEWART, LAWRENCE & CO., Ltd.,  
Proprietors.

Printed and published for STEWART, LAWRENCE & CO., LTD., by Dorothy Eileen Stewart, Gibbons Street, Upper Hutt, at the Registered Office of the Company, 3rd Floor, Whitaker's Building, 11 Manners Street, Wellington, C.I.