

Camp News

GRATIS TO
H.M. FORCES

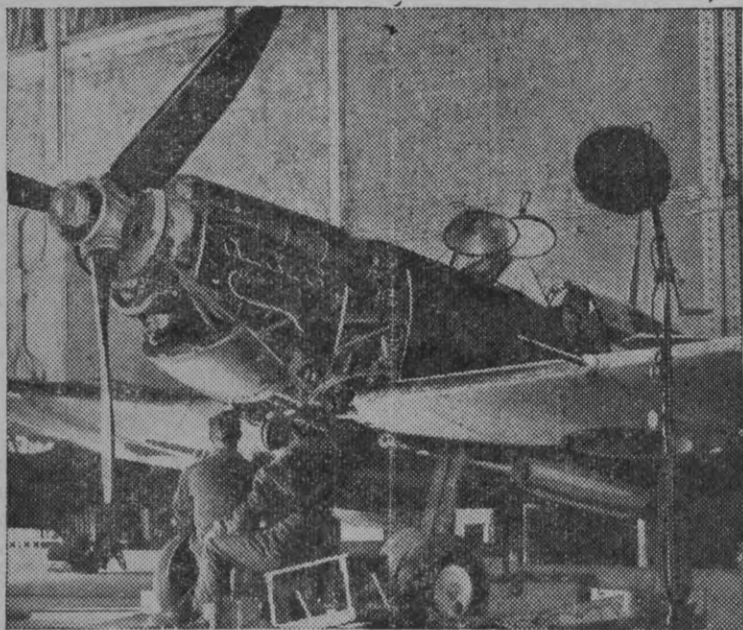
ARMY, NAVY & AIR FORCE WEEKLY

8 PAGES
PRICE . . 2d.

VOL. 3. NO. 151

Wellington, Friday, December 4, 1942

Registered as a Newspaper for Transmission
by Post at the G.P.O., Wellington.



R.A.F. ground staff overhauling a Spitfire before one of the Fighter Command's daylight sweeps over enemy territory.

THE MARKED SHILLING. SMART AND INTRIGUING.

Performer holds up two separate shillings and requests the loan of a third which is marked. Performer is blindfolded and coins mixed. Without hesitation he is able to locate the marked coin.

INSTRUCTIONS, 1/2.

ASTONISHING APPEARING CIGARETTE.

NOVEL, EASY AND MYSTERIOUS.

From where did it come? That's the Mystery!

COMPLETE WITH PATTEN & INSTRUCTIONS, 1/6.

KING'S HOTEL
COURTENAY PLACE.
(Opp. New Fire Station)

Soldiers and all H.M.S. Forces
Specially Catered for.

M. M. O'BRIEN, Proprietress.

CAMBRIDGE OYSTER BAR.
CAMBRIDGE TERRACE.

We specialise in Grills, Flounders,
Whitebait & Crayfish.

Fish and Chips to take Home.

Open till 12 p.m.

A. YIANAKIS, Proprietor.

CHAS. HILL & SONS, LTD.
HATTERS & MERCERS

238 Lambton Quay, Wellington.
(Opp. D.I.C.)

Makers of Regulation Hats & Caps
ARMY, NAVY & AIR FORCE.

WHILE - U - WAIT
STEAM PRESSING SERVICE
47 FARISH STREET [off Manners Street]

Around the corner from
the Allied Services Club.

Open on **WEEKDAYS & SATURDAY**
TILL 7.30 p.m.

**BEER IS BEST
BUT
WAITEMATA
IS BETTER**
See that you get it!

WELLINGTON
AMUSEMENT CENTRE.
ALL IN COURTENAY PLACE.

WHEN ON LEAVE
Don't Fail to Visit the
1940 EXHIBITION
24 Cars **DODGEMS** 24 Cars

THE FUN PARLOUR
Machines and Games Galore!

SPORTSLAND
THE RANGE MOVING TARGETS.

THE PARAMOUNT
15 TABLES BILLIARD SALOON.

WALKER AND DUNCAN
ENTERPRISES.

Ask for

GRIFFINS

Oven Fresh

BISCUITS

Made the Modern Way

Card Tricks that Entertain

READING THE CARDS.

PERFECTLY NEW AND NOVEL METHOD—ANY PACK OF
CARDS USED.

A pack of cards is handed to audience to shuffle, cut, etc., after which performer holds at arms' length with pips facing audience. Before peeling off each card which is in full view of the audience performer names each card.

COMPLETE WITH INSTRUCTIONS, 1/6

THE MONTE CRISTO DECK, No. 1.



MAGIC FORCING PACK OF CARDS.

No. 1.—This is a modern forcing deck. You can show all the cards to be different, yet you can force a card in the most subtle manner.

Price, Complete, 4/6.

THE MONTE CRISTO DECK, No. 2.

No. 2.—Enables any amateur to perform many tricks, including the following:—Restore the torn card. Burn a card, and afterwards restore it whole and perfect. Cut pack and name top card before the cut is made. Burn card and then find it in the pocket of the person who burned it. Discover a card by its weight or smell. Destroy a card and afterwards find it in a hat, in a locked box, under a chair cushion in a gentleman's pocket. Any one of the tricks can be performed by an amateur in the drawing-room, without fear of detection and will enable him to amuse the company with only the aid of the pack of cards, no confederate being required with any of the tricks. Complete, with Cards, Directions and Secret.

Price, Complete, 4/6.

MAGIC CARDS.

CLEVER — STARTLING — SENSATIONAL.

Performer hands pack of ordinary cards to a member of the audience to shuffle. Cards are cut and performer places half in each of trouser's pockets. Audience is requested to name a card (for instance, 7 of spades) and high presto! in an instant performer produces the selected card. Easily operated by anyone.

PRICE: 6/6, Post Free.

THE DIMINISHING CARD

A Clever Trick Very Easily Performed

The performer exhibits a full-sized card, passes his fingers over it a few times and it becomes smaller. He manipulates it again and its size is further reduced, until it is not much larger than a visiting card.

PRICE 1/6

PENETRA — MATTER THROUGH MATTER

A Novel Card Trick. No Skill or Practice Needed. Very Mystifying.

Effect—A Card with cross cuts in the middle is shown and another ordinary card handed around for examination. This is placed behind the first card and a rubber band is passed around each end. The performer bends the front card forward to show that the other card is still there. Then he thrusts a pencil or a match right through the cards and draws out the other side, yet he immediately hands out the rear card, that proves to be intact and undamaged.

PRICE 2/6, with full directions and diagram.

Write enclosing Postal Note to
STEWART, LAWRENCE & CO. LTD.
11 Manners St., WELLINGTON