



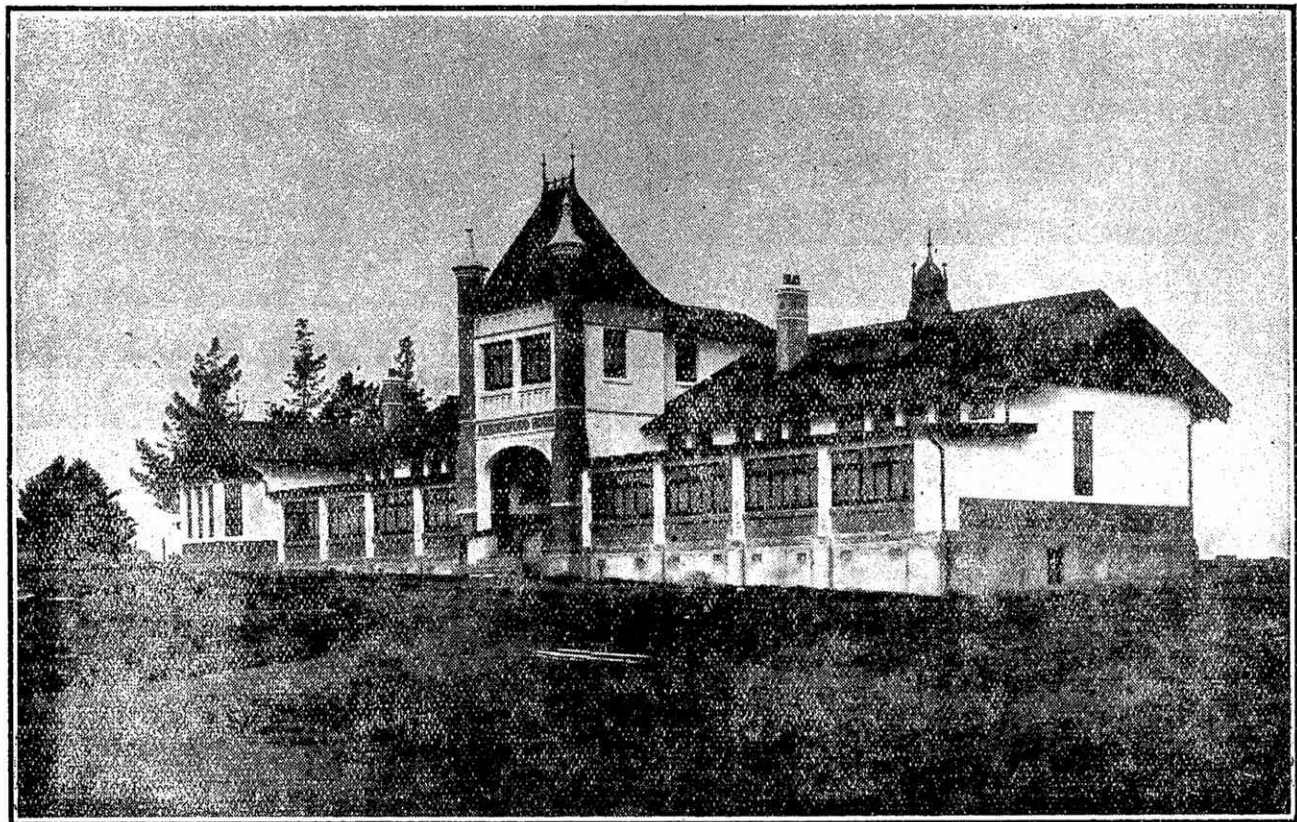
# The Waiapu Church Gazette.

VOL. XVIII.—No. 1.

NAPIER, JULY 1, 1927.

Price 3d.

or 4s. per Annum.  
Post Free.



ABBOTSFORD HOME, WAIPAWA.

## STATEMENT OF MISSIONARY CONTRIBUTIONS.

## Diocese of Waiapu.

| Month.      | Amount required at end of each month. |    |    | Amount raised at end of each month. |    |    | Deficit at end of each month. |    |    |
|-------------|---------------------------------------|----|----|-------------------------------------|----|----|-------------------------------|----|----|
|             | £                                     | s. | d. | £                                   | s. | d. | £                             | s. | d. |
| June, 1927  | 2610                                  | 0  | 0  |                                     |    |    |                               |    |    |
| May, 1927   | 2392                                  | 10 | 0  | 1552                                | 3  | 6  | 840                           | 6  | 6  |
| April, 1927 | 2175                                  | 0  | 0  | 1543                                | 8  | 6  | 631                           | 11 | 6  |
| March, 1927 | 1957                                  | 10 | 0  | 1359                                | 11 | 5  | 597                           | 18 | 7  |
| Feb., 1927  | 1740                                  | 0  | 0  | 1128                                | 19 | 8  | 611                           | 0  | 4  |
| Jan., 1927  | 1522                                  | 10 | 0  | 870                                 | 8  | 0  | 652                           | 2  | 0  |
| Dec., 1926  | 1305                                  | 0  | 0  | 755                                 | 3  | 0  | 549                           | 17 | 0  |
| Nov., 1926  | 1087                                  | 10 | 0  | 562                                 | 18 | 8  | 524                           | 11 | 4  |
| Oct., 1926  | 870                                   | 0  | 0  | 364                                 | 5  | 7  | 505                           | 14 | 5  |
| Sept., 1926 | 652                                   | 10 | 0  | 318                                 | 5  | 0  | 334                           | 5  | 0  |
| Aug., 1926  | 435                                   | 0  | 0  | 195                                 | 5  | 11 | 239                           | 14 | 1  |
| July, 1926  | 217                                   | 10 | 0  | 73                                  | 13 | 5  | 143                           | 16 | 8  |

Private letters intended for the Bishop should be directed to him personally, Napier Terrace, Napier. Official letters for the Bishop should be directed to him care of the Diocesan Secretary.

All Parochial Business Communications should be sent to the Diocesan Secretary. Such letters should not be addressed to him or to anyone by name, but as follows:—The Diocesan Secretary, Diocesan Office, P.O. Box 227, Napier.

Cheques should be crossed, marked "not negotiable," and made payable to the order of the Diocesan Treasurer, and not to anyone by name.

Diocesan Secretary: Archdeacon Brocklehurst.

Diocesan Treasurer: Mr R. E. H. Pilson.

NOTE.—Deficit at end of May £840 6s. 6d.

Phones: Office, 877; House, 798.