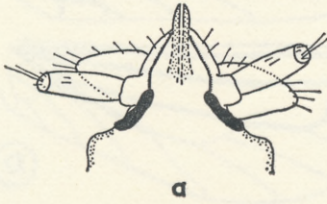


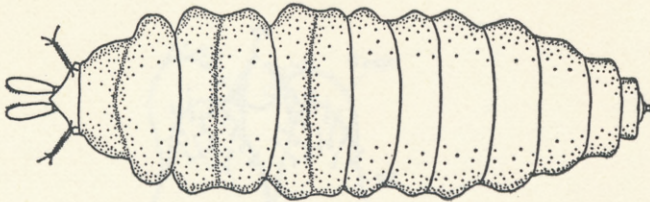
## IMMATURE STAGES

*Egg* (Pl. 1a)

The egg is elongate-oval. Measurements of two mounted—0.38 x 0.19 mm, 0.41 x 0.19 mm. Chorion with irregular hexagonal depressions and a round, smooth, white operculum (?) near the apex. Colour brownish-pink.



a



b

FIG. 2 del. K. A. J. W.

FIG. 2.—*Cryptoscenea australiensis* (End.) First instar larva, head, dorsal. b. Final instar larva, dorsal.

translucent. Thorax and abdomen dull purple, and palest in mid-dorsal and mid-ventral lines; anal papilla colourless, abdominal segment anterior to it whitish.

*Pupa* (Pl. 1c)

Pale reddish-brown; apices of antennae, apices of wings, legs, colourless; eyes red.

*Cocoon* (Pl. 1d, e)

A white pupal cocoon, discovered on a cork in a vial, exhibited the typical Coniopterygid double envelope structure. A loosely woven outer cover was 3 mm in diameter and the inner tightly woven envelope, enclosing the pupa above and below, was 2 mm in diameter.

## REFERENCES

- DUMBLETON, L. J., 1936. IV. The biological control of Fruit Pests in New Zealand. In Miller, Clark and Dumbleton. Biological Control of Noxious Insects and Weeds in New Zealand. *N.Z.J. Sci. & Tech.*, 18: 588-592.
- TILLYARD, R. J., 1926. *The Insects of Australia and New Zealand*. Angus & Robertson, Sydney. 560 pp.

D. E. KIMMINS,  
British Museum (Natural History),  
Cromwell Road,  
London, S.W.7, England.

K. A. J. WISE,  
c/o. Canterbury Museum,  
Christchurch, New Zealand.