

Fig 2

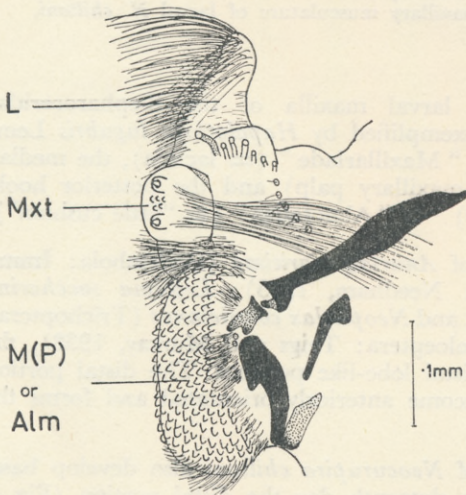


Fig 1

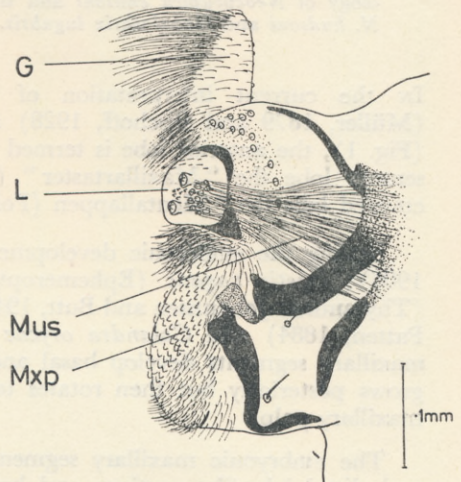


Fig 3

FIG. 1.—Ventral view of left maxilla of *Hapalothrix lugubris*. Interpretation after Bischoff and Müller. L—Maxillarlade (= Lacinia); Mxt.—Maxillartaster (= Maxillary palp); M(P)—Mentallappen (Polster) (= “little cushion”); Alm.—Almofadas (= “little cushion”). FIG. 2.—Lateral view of sixteen day embryo of *Neocurupira chiltoni*. Mn.—Mandible; Mx.—Maxilla; Mxp.—Maxillary palp; Lb.—Labium. FIG. 3.—Lateral view of left maxilla of *Neocurupira chiltoni*. G.—Galea; L.—Lacinia; Mxp.—Maxillary palp; Mus.—Muscle.

This hypothesis is supported by the musculature of the larval maxilla. According to Das (1937) and Hinton (1958), dipterous larvae never have muscular insertions on the maxillary palp. Das further states that, though certain muscles may be lost in the larval maxilla, the cranial flexor muscle of the lacinia is always retained. Examination of the musculature of the maxilla of larval *Neocurupira*