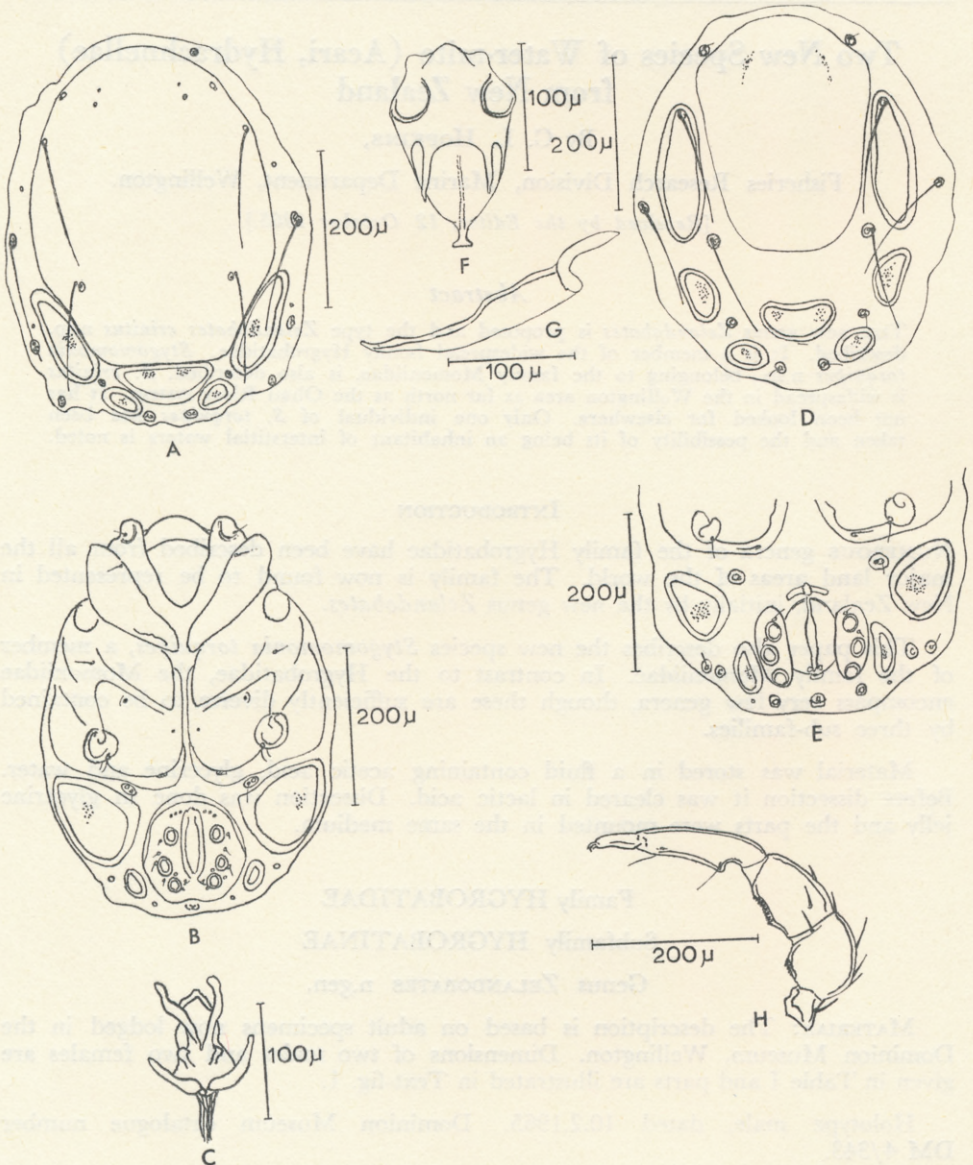


Allotype female, dated 10.2.1965. Dominion Museum catalogue number DM 4/344.

**DESCRIPTION OF GENUS:** Body somewhat flattened, oval. Skin thin and finely ridged. One large sclerotised shield and several smaller plates on the dorsal surface. Small sclerotised plates on the ventral surface near the genital area. Epimera moderately large. First epimera fused to each other behind the maxillary organ. Genital area large, near hind end of ventral surface, lying well away from the epimera. Genital opening slit-shaped, flanked by distinct genital plates carrying acetabula.

Maxillary organ with its basal plate produced backwards as a stem.



TEXT-FIG. 1.—*Zelandobates crinitus*. A, Male dorsal. B, Male ventral. C, Penis skeleton. D, Female dorsal. E, Female posterior ventral. F, Maxillary organ dorsal. G, Mandible. H, Male right palp.