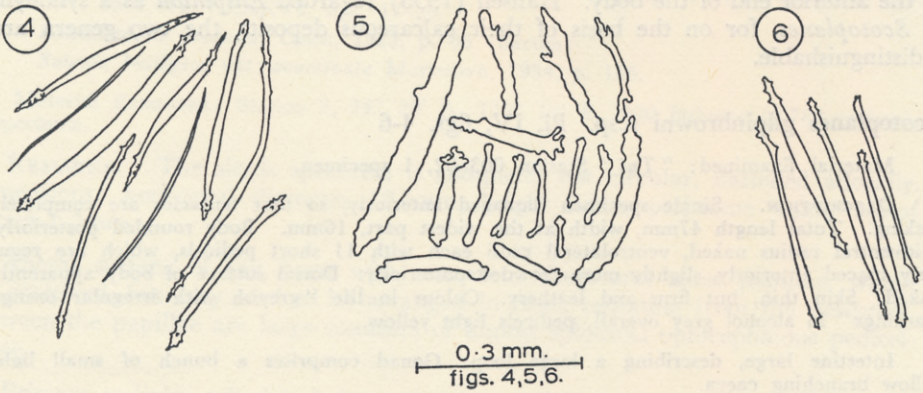
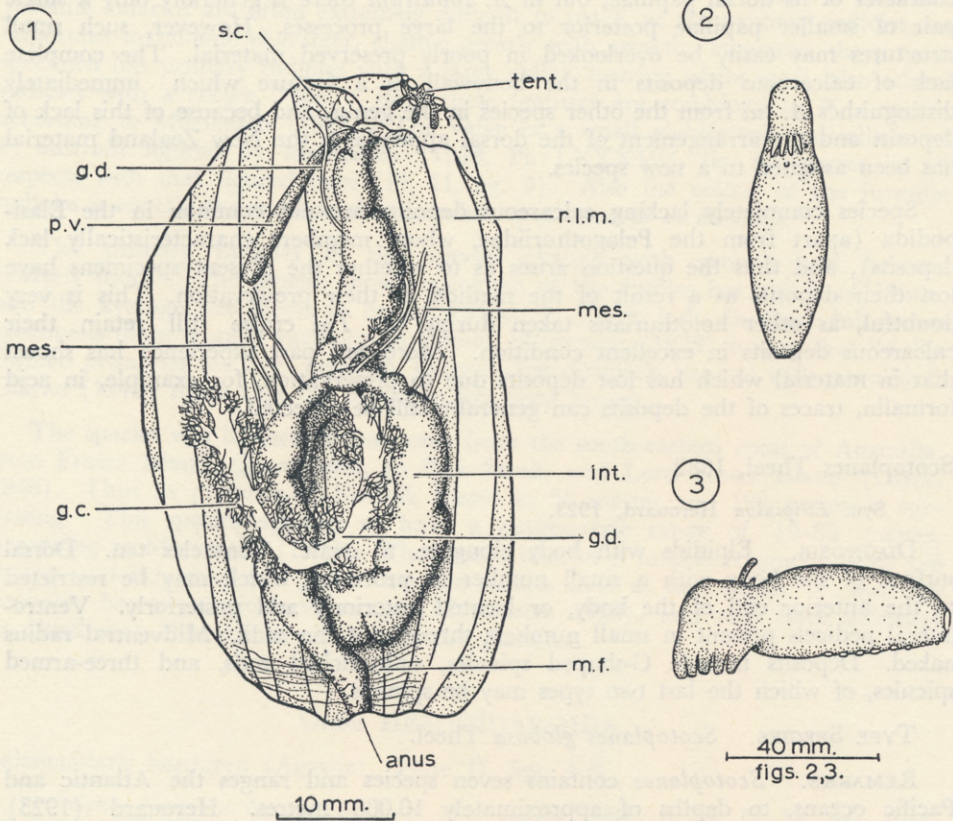


PLATE IV



*Amperima tui* n. sp. Fig. 1—Internal anatomy. Fig. 2—Dorsal aspect of entire animal. Fig. 3—Left lateral aspect.

*Scotoplanes gilpinbrowni* n. sp. Fig. 4—Rods from the dorsal body wall. Fig. 5—Rods from the ventrolateral pedicels. Fig. 6—Rods from the ventral bodywall.

Abbreviations: g.c., genital caeca; g.d., genital duct; int., intestine; mes., mesentery; m.f., muscle fibres; p.v., polian vesicle; r.l.m., radial longitudinal muscle; s.c., stone canal; tent., tentacle.