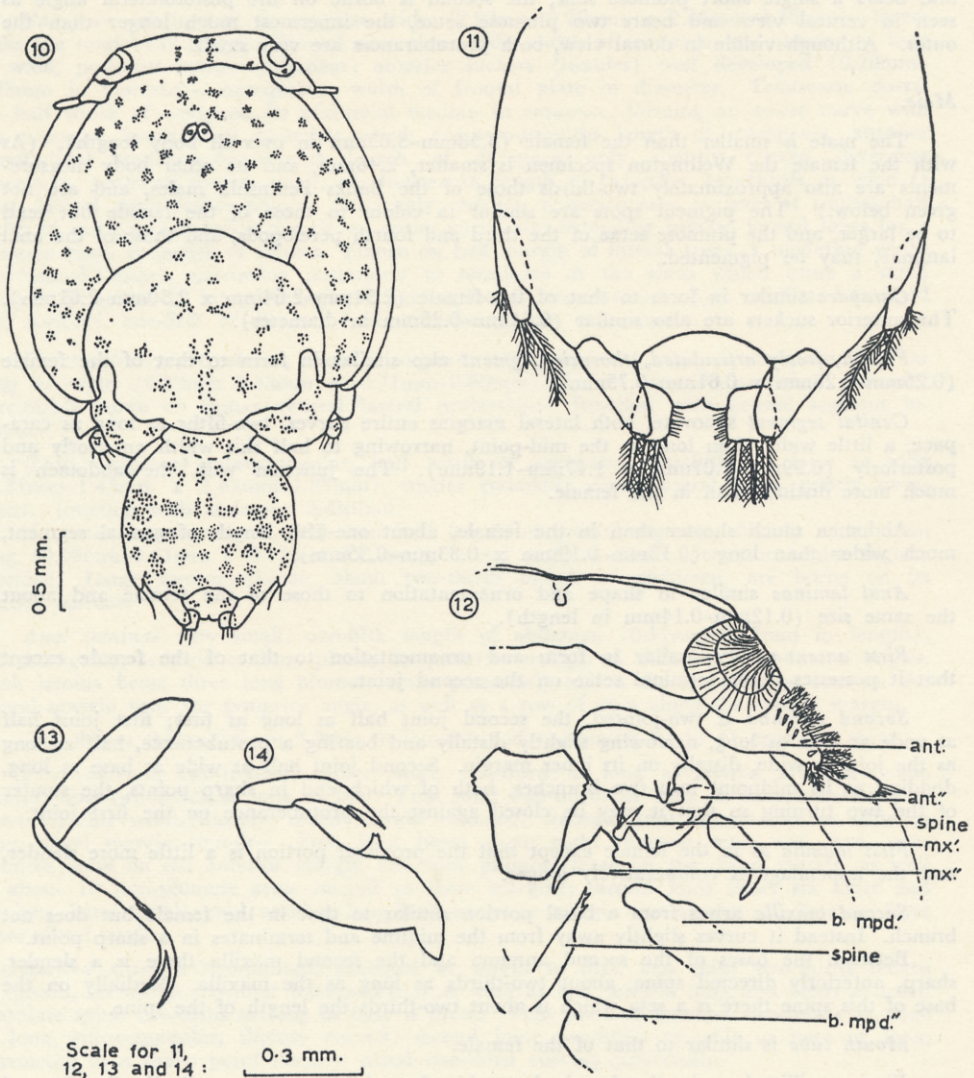


*Fourth pereopod* four-sevenths length of carapace, three-jointed, first joint half length of pereopod, distal two subequal in length; first joint one-third as wide as long, narrowing proximally and distally, outer margin curved, distal margin rounded; second joint two-ninths as wide as long, subpyriform owing to outer margin being four times length of inner, bearing a slender spine, two-fifths length of joint, on outer distal angle with a very small semicircular flange near its base; third joint one-fifth as wide as long proximally and distally, narrowing to two-thirds this width medially, inner margin twice length of outer,



TEXT-FIG. 2.—*Caligus büchlerae* n.sp. ♂. 10—Dorsal view. 11—Dorsal view, genital segment. 12—Mouth parts and antennae. 13—First maxilliped. 14—Second maxilliped.

Abbreviations.—a.l. = anal laminae; ab. = abdomen; ant' = first antenna; ant'' = second antenna; ant. s. = anterior sucker (= lunule); ap. = apron of third pereopods; b. mpd.' = base of first maxilliped; b. mpd.'' = base of second maxilliped; e.s. = egg strings; g.s. = genital segment; mx.' = first maxillae; mx.'' = second maxillae; mpd.' = first maxilliped; mpd.'' = second maxilliped; p. I-IV = first to fourth pereopods; sp. = spermathecae; st. f. = sternal furca.