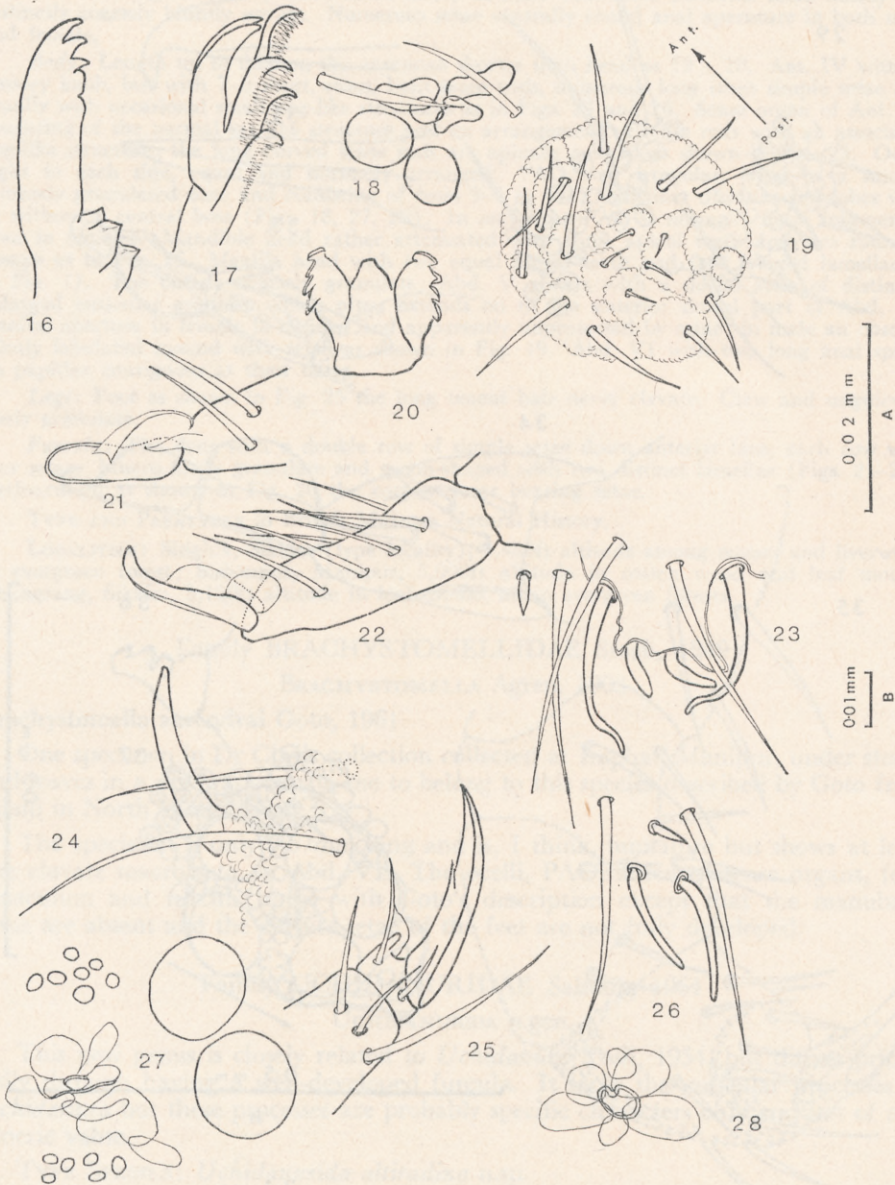


The specimens of *Xenylla obscura* studied came from: Gangtok, Sikkim, 6,000ft among decaying leaves, moss and rotting leaves; Chungtang, Sikkim, 5,120ft in leaf mould of evergreen forest.



Figs. 16–28.—*Hypogastrura indovaria* n.sp.—Fig. 16.—Mandible. Fig. 17.—Maxilla. Fig. 18.—Anterior ocelli and PAO showing two associated setae. Fig. 19.—Male genital plate (arrow indicates anteroposterior direction). Fig. 20.—Tenaculum. Fig. 21.—Mucro. Fig. 22.—Mucro and dens. Fig. 23.—Sense organ Ant. III. Fig. 24.—Anal spine. Fig. 25.—Foot. Fig. 26.—Two sense rods, sensory peg and setae from Ant. IV. Fig. 27.—PAO, cuticular granules and anterior ocelli. Fig. 28.—Another PAO. Figs. 16, 17, 18, 19, 23, 25, 26, 27 and 28, Scale A; Figs. 20, 21, 22 and 24, Scale B.