

February the tips of some of the branches grow erect above the ground as pinkish-white flowering stems, up to 12cm high, which later turn brownish. No chlorophyll is formed in any part of the plant.

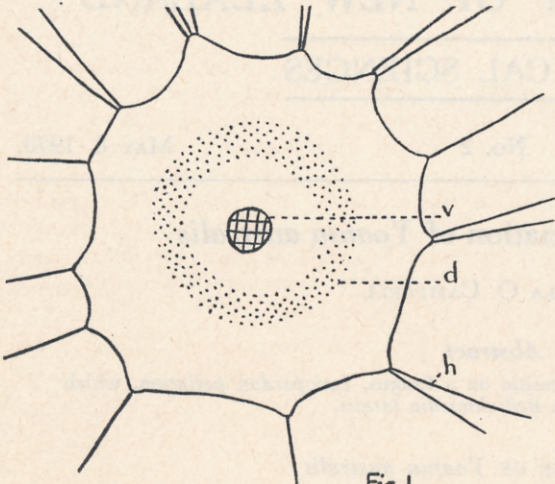


Fig.1



Fig.2

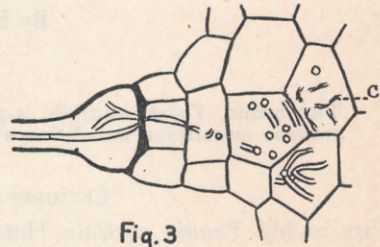


Fig.3

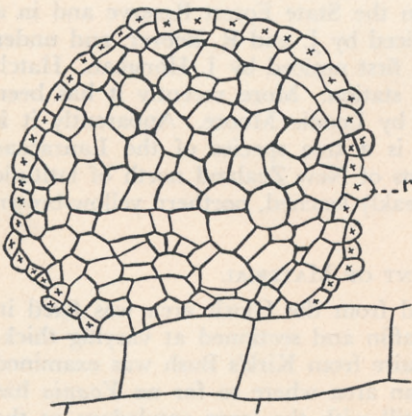


Fig.4

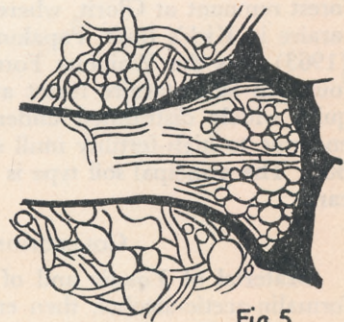


Fig.5



Fig.6

FIG. 1.—Diagram of a transverse section of a *Yoania* rhizome. $\times 20$. d, fungal digestion zone; h, hairs (full length not shown); v, vascular cylinder. FIG. 2.—Projection bearing a young hair shown in section. $\times 85$. FIG. 3.—Transverse section of the outer part of a rhizome showing an early stage in infection. $\times 185$. c, collapsing hyphae. FIG. 4.—Transverse section of a rhizomorph appressed to the surface of a *Yoania* rhizome. $\times 800$. r, rind. FIG. 5.—Section of the base of a hair showing fungal pseudoparenchyma developing in and around it. $\times 400$. FIG. 6.—Transverse section of a cell of the digestion zone of *Yoania* showing an early stage of digestion. $\times 400$. c, clump at an early stage; f, swollen hyphae; n, nucleus.