

# "Attention, Guitar Heroes"

Ibanez guitars are endorsed by everyone from Steve and Joe here, to Scott Henderson of Soundgarden. Not to mention John Scofield and George Benson. Excellent quality instruments, built to perform and built to last. So plug in, and blow the others off the stage.

**NEW  
SEASON  
GUITARS  
& BASSES  
FULL RANGE  
IN STOCK  
NOW!**

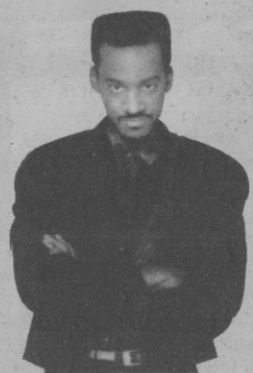
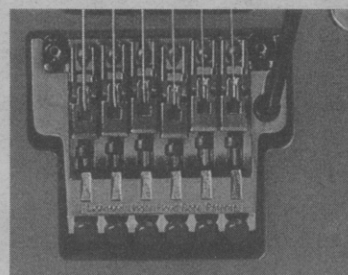


RG560JB



RG565LB

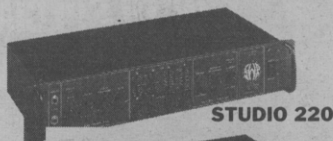
Since its introduction in 1987, the RG500 series - with its American-designed pickups, lightning fast 24 fret neck, recessed tremolo, huge choice of finishes and superb craftsmanship - continues to be the unchallenged standard in instruments for the working guitarist. • The 1992 model year ushers in a huge number of significant improvements and additions to the RG500 line that assure its continued high status. Like all other professional series Ibanez guitars, RG500 necks are now all quartersawn for great consistency, stability and strength. Each model in the series, RG550, RG550DX, RG565, RG570 and RG570FM, now has a sound character somewhat different from each of the other RG500's due to a carefully chosen individual combination of pickups. As if all these improvements weren't enough, all RG500's are now equipped with the streamlined Lo-Pro Edge which allows for both heavy tremolo arm playing and traditional right hand picking and placement. • Looks have not been forgotten either. The 1992 finish Emerald Green and the new RG550DX with its matching mirror pickguard and Cosmo Black hardware are guaranteed to draw eyes to the stage.



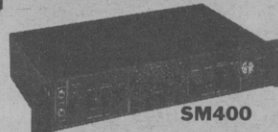
## BIG BAD BASS

Yo! Spank the Plank with Marcus...

For a bass sound that'll rock the house, or maybe knock it down, try the gear that Marcus Miller swears by. SWR lightweight mixed tube/solid state rack mountable heads - 200 watts a side or 400 watts bridged, teamed with any one (or more!) of several awesome SWR cabinets. The TRIAD 1 contains a 15" woofer, 10" mid-range driver and a horn for clean highs. Or maybe the Big Ben is more your style: a mighty 18" Custom Sub Woofer with twin rear firing ports and a heavy-duty 7-ply maple or birch construction.



STUDIO 220

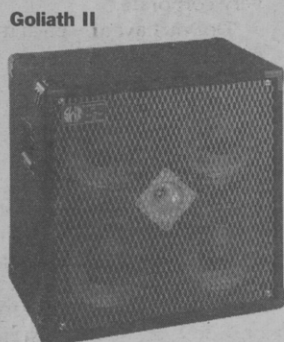


SM400



SR885LB

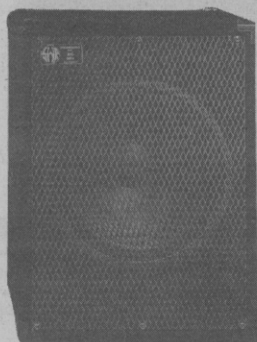
New Soundgear 5 & 6-string basses, give you more range than ever before. With basswood bodies, 3-piece maple necks and rock solid AccuCast-B.IV bridges. Feel the Power!



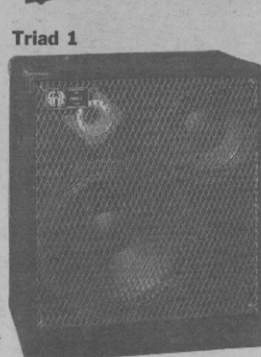
Goliath II



Goliath Junior II



Big Ben



Triad 1



SR886BK

228 PONSONBY ROAD, AUCKLAND 2. P.O. BOX 47-032  
TELEPHONE 09 - 376-6165 FACSIMILE 09 - 376-2169

HARBORNE  
MUSIC CENTRE  
& ARTHUR