

superb solos every step of the way. The entertainment factor was huge, especially when Put-Boy sent the ladies weak at the knees with an awe inspiring exotic dance to 'Wipeout'. The highlights were too many to describe, but the band rocked, the crowd went wild and rock 'n' roll seemed to make sense.

Speaking as one who has never seen Elvis or Led Zeppelin live, nor taken acid, and regrets missing these experiences, I think I experienced all three in one show with Dread Zeppelin. Sure, the musical snobs will sneer and listen to another Velvet Underground record, sure, you may never want to see this thing more than once in case the joke wears thin, but for that one glorious night The King was back to his rightful place in the galaxy of rock. Oh yeah, I think some of the guitar parts were prerecorded. **KIRK GEE**

DUNEDIN

Dunedin is coming out of its holiday slumber as students cruise back into town... and the new and improved **Crown** prepares for reopening. The result of several weeks of hard work and extreme renovations is greater space and the creation of a dance floor. The bar has diminished, the bottle store's vanished and there's three close-circuit TVs for the non-techno phobics lounging in the added seats... **Snapper** and **David Kilgour** rise to the occasion 14 and 15 Feb... after an Orientation appearance **Rampant** will be no more. They've amicably split due to different projects, particularly **People's Promotions** who are concentrating on what they hope will be a South Island-wide Music Storm this year... the forthcoming departure of Alan Haig leaves **Snapper** drummerless and looking. If you're keen and good, approach the band when their national tour hits town or phone Peter Kaye (03) 473-7712. Same man, same number for details of a fresh live venue, the **Wharf** hotel which is now taking bookings for touring and local acts... **Death Ray Cafe** haven't and are not about to disband. Plans for the year include an EP or LP release which will apparently see the band "coming back hard and fast"... after a break or two a new bassist and same old drummer after all means the return of **Isolation Backlash**... the new **Puddle** recording *Into The Moon* is set for release in March, CD and cassette only. The band itself is set for a Christchurch visit this month, could that mean one day they'll tour?

The **Radio One** Top 50 for '91 was saturated with local talent, established and new, from the likes of **Puddle**, **Chooks**, **3Ds** through to **Some Velvet Morning**, **Glove Puppet** and **Funhouse**. But heading the listener-voted chart was **Tin Soldiers** with 'Crush The Dream'... **3Ds'** US expedition has been put back to late April / May... **Side On 3** features gripping pieces on **Shayne Carter**, **David Kilgour**, **George Henderson** and more, available for \$3 from 219 Dalzail Road, Dunedin... Radio One mag **Spec** is also out now, it includes young band profiles, a **JPS** interview and the endlessly fascinating cartoon series by 'Super Shayne' creator Chris Stapp. Just send \$2 to Radio One, PO Box 1436, Dunedin... more marketing; in honour of Lou Reed's 50th birthday on 14 March, Central Otago's tiny St Bathans is celebrating madly with 24 hours of music and videos. For \$50 you too can do it, and receive all the food and drink your frame can handle while you're there. Space is limited, contact Laurence Frewer, c/- Vulcan Hotel, St Bathans quick... Orientation looms near and once again excels itself, as '92 includes Bats, Able Tasmans, Push Push, JPS Experience, and Aussie Abba tribute outfit Bjorn Again (see interview elsewhere this ish), while young guns My Deviant Daughter and Tin Soldiers gained good spots. Roll on varsity...

NATASHA GRIFFITHS

Louder than...

Over 100 user-friendly stores throughout Auckland.

All over Auckland there are stores which display B-card user-friendly stickers. All these businesses offer cardholders special rates and discounts. Check the latest copy of *Stamp Magazine* for listing and details.

On air services.

Card holders also have a number of on air services at their disposal. These include an accommodation and entertainment guide, the community notice board, and of course talkback with Giles.

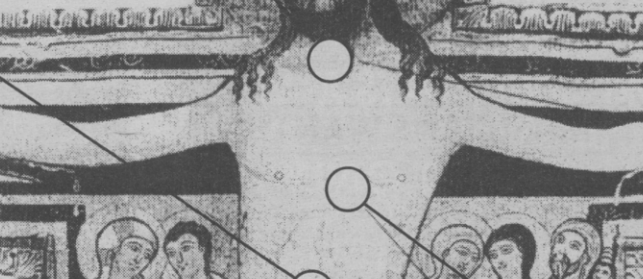
On air giveaways.

Every year BFM gives Truetime B-card holders more than \$30,000 worth of prizes. As part of BFM's move to play a greater role within the local music industry, BFM will now be attempting to co-ordinate national weekly giveaways. BFM will be networking with the other student stations to maximise the impact for local releases, by reaching over 150,000 listeners in the same week.

Private Function.

Notorious awesome party. held every year for Truetime B-card holders only. BFM DJs, bands, visuals and a wicked bar. Different space every year. This year the event is scheduled to coincide with the NZMS.

Truetime Records: Remuera Rd, Broadway, Victoria Park, St Luke's, Shore City, Manukau City, Papakura



Workshop courses.

This year BFM will be running a series of training workshops which will be available to card holders. Workshops will include DJ and voice training, copy writing, technical skills and more. A workshop guide will be included in this year's mailouts.

Orientation with Bailter Space.

BFM holds what could be its last ever concert on campus in the Quad. Bailter Space, on their way to New York play one last date Sat Feb 29th. More than just a concert, a moment in time. Free with the card.

NZ Music Seminar.

This year BFM presents Auckland's first music industry conference. The weekend long NZMS will cover such topics as record deals, live performance, promotions, radio stations, play listing and much more. Guest speakers will include people from within the local music industry, record companies, radio stations, magazines and performers. Truetime B-card holders will be mailed a complimentary programme and will receive special rates. The NZ music seminar will be held during Private Function weekend, the last weekend in June.

CAMPUS RADIO BFM LTD, C/- AUCKLAND UNIVERSITY, PRIVATE BAG, AUCKLAND

HERE'S MY \$30 - SEND ME MY 1992 B-CARD!

Cheque payable to Campus Radio BFM Ltd
 VISA DINERS AMEX MASTERCARD BANKCARD

Card No _____ Expires _____

Name _____

Address _____

Signature _____ Phone _____

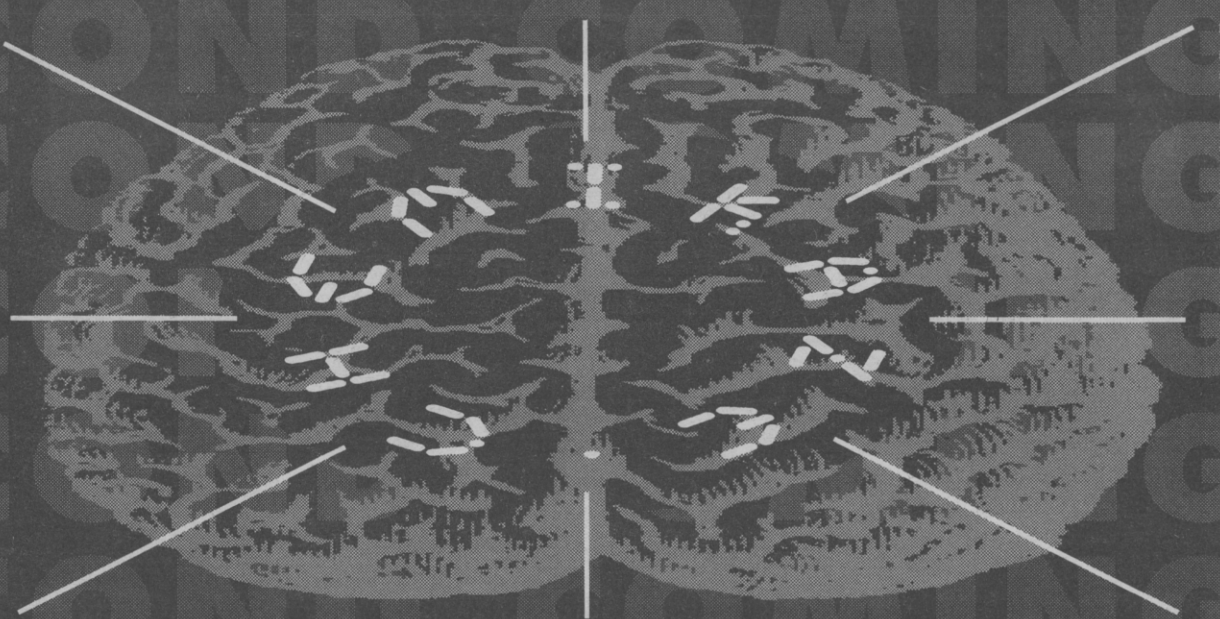
CHEMIKAZE

COMPACT DISC

TRASCH

& CASSETTE

AVAILABLE SOON



RELEASED THROUGH WILDSIDE