



MISSING TREMBLE (L-R) Bob Shephard (bass, guitar, vocals), Steve Duffels (drums, Bill McRae (guitar, keyboards, vocals). Been together 3 months and 10 gigs. Own a P.A. Sound by Gregory Brice. MT music is synthesiser based, bit funky modern music.

"I'd like to see greater musical and personal co-operation between bands. The situation with agencies and the breweries can only get worse." (Bob)

"It's a case of being positive and trying to do something about it, not just flowing with the tide." (Bill)

"I'm sick of people going on about life being shit. Promoting apathy is no good. Your music can purge your dissatisfaction." (Bob)

INSTIGATORS (L-R) Sonya (keyboards, vocals), Eddie (drums), Tom (guitar, vocals), Edward (sax, vocals), Tarewai (bass, vocals). Formed 8 months ago. Winners of 1981 Battle of the Bands. Tom joined a month ago. They play 50 percent originals and ska/rock covers.

Ripper 45 out August 17, 'Not Really Bad'/'In Line'. Band will tour Enzed this year.

"We want to play everywhere we possibly can." (Edward)

Sonya, Tom and Tarewai write are main writers: "We write from personal experiences, but we don't write love songs." (Sonya)

ALMS FOR CHILDREN (L-R) Gary Charlton (vocals), Daron Johns (drums), Ben Hayman (bass), Paul Fogarty (guitar). Giggled for four months. An EP is released on Rem Records.

"We're going to do another one on Rem. We think it will be a 12 inch 45 with six songs on it." (Paul)

AFC play all originals: "The songs are written by everybody working together. They change, the more we play them." (Paul)

"I'm pissed off with the lack of venues. I'm sick of places being closed down because of the mindless few who feel they have to smash the place up." (Gary)

ANN GRAY 1945-1981

Ann Gray, a dear friend and neighbour, from June 1977 when the Island Of Real and *Rip It Up* were founded in Airedale Street, died from cancer late July. Ann's warmth made the Island Of Real something special for musicians and patrons - a much loved time for NZ rock'n'roll.



CAFE ELECTRIQUE
10 VULCAN LANE
OPEN 11AM
TO MIDNIGHT
MONDAY TO SAT.

'RUMOURS' FROM PAGE 2

At the same time a new wave of violence has stifled attempts to organise independent gigs. The Rock Against Racism show at Thistle Hall with Jasmin, Primitive Art Group, Spines, Flamewave, Gordons and Naked Spots Dance went off without trouble, but Wellington Zone II (Steroids, Mockers, Naked Spots, Digits) was closed early because of aggro outside the hall. Two shows at Victoria University, the Screaming Blam-matic Roadshow and a dance with Mockers, Innocent and Hot Spoons both saw violence, including attacks on band members.

Impressive newcomers are Spines (recording for Bunk, natch) and Neoteric Tribesmen, who are mercifully unrecognisable as Condemned Sector ... Flamewave are to record ... ex-Proton, Tony Richards has disbanded Heaters, but is looking for personnel for recording and occasional gigs ... on release

are Beat Rhythm Fashion's single and the Mockers' singloid. Les Crew

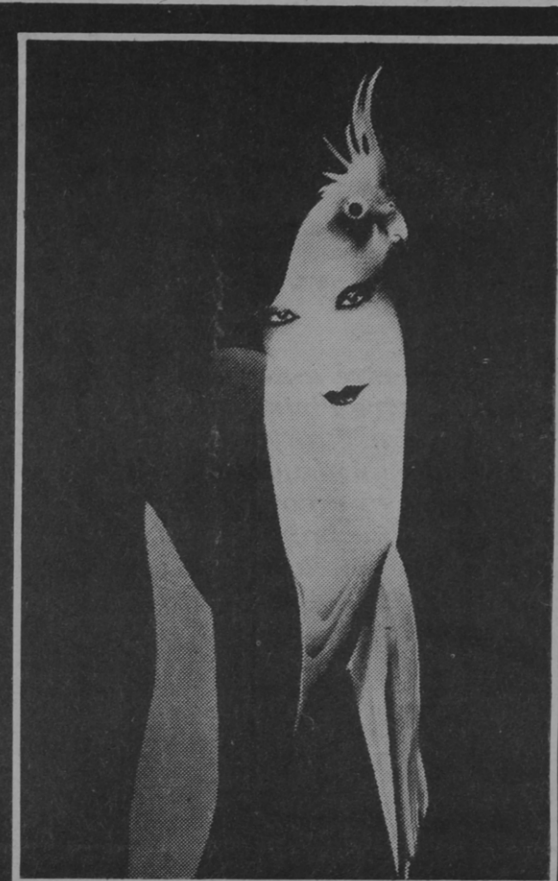
Dunedin

In September the Clean are going on a six week, North Island stint to promote their Flying Nun single, 'Tally Ho'. When they return, the band will move permanently to Christchurch because of the shortage of work in Dunedin.

Broken Models have recorded and pressed 500 copies of their single 'Inside The Maze'/'By The Sea'. They are currently touring.

Craig Easton has left the Verlaines ... Nerve are back without a frontman ... Brian Seque is no longer in No Drill. Bassist John Pringle is doing vocals.

New band Junction Avenue is to play at the City. They consist of Steve Larkins, Ivan Hamilton, Jeff Dickie, Alan Crawford and Henare Makoare. George Kay



SAKS

Hair & Beauty
74 Albert Street
Ph 371-042, 375-900

UB40
Present Arms

NEW ALBUM
(No.1 UK HIT!)

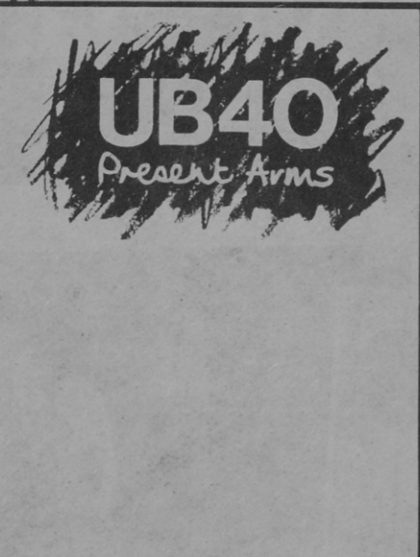
Present Arms

DEP 1 DEPC 1

ALSO INCLUDES
SPECIAL 12"
45 RPM
SINGLE

UB40 UNEMPLOYMENT BENEFIT ATTENDANCE CARD

| | | | |
|--------------------------|----------|-----------|-----------|
| Surname (block capitals) | Initials | Ni Number | CODOT No. |
| M | | | |
| Post Office | | | |



MARKETED BY **CRTIC** PO BOX 3825, AUCKLAND 1

| |
|------|
| MON |
| TUES |
| WEDS |
| THU |
| FRI |

Signing box
chkd by [] dt []

already claimed, d with part 3 complet benefit Office at the dat granted below:

SIGNING OFF
GRADL 2
GRADC 2

UB40



ONE IN TEN
PRESENT ARMS IN DUB

'ONE IN TEN'
LIMITED TOUR EDITION
12 INCH SINGLE DEP 212
ALSO AVAILABLE
IN 7" SINGLE BAG DEP 2

IN CONCERT
SEPT 13.
LOGAN CAMPBELL CENTRE
BOOK AT THE CORNER. TICKETS \$12.50 INCL.

PENKNIFE GLIDES

Featuring... NERVOUS/TOO LATE NOW / PLEASURE THROUGH TEARS / BUSINESS WORLD

OUT ON REACTION THROUGH POLYGRAM

12" EP out 28 August

"PRE-ORDER AT SOUNDS UNLIMITED, QUEEN ST. AND GET A FREE TICKET TO THE MAINSTREET LAUNCHING PARTY."

26 AUG. MAINSTREET LAUNCHING PARTY
27 AUG. HILLCREST TAVERN (HAMILTON HOP)
28 AUG. MT. EDEN MEMORIAL HALL (ALL AGE RADE)
29 AUG. RUMBA BAR (SAT. AFTERNOON LOON)
30 AUG. MAINSTREET MATINEE (ALL AGE RADE)
4,5 SEPT. ROCKS, ROTORUA (SULPHUR THE CONSEQUENCES)
10, 11, 12 SEPT. HILLCREST TAVERN