

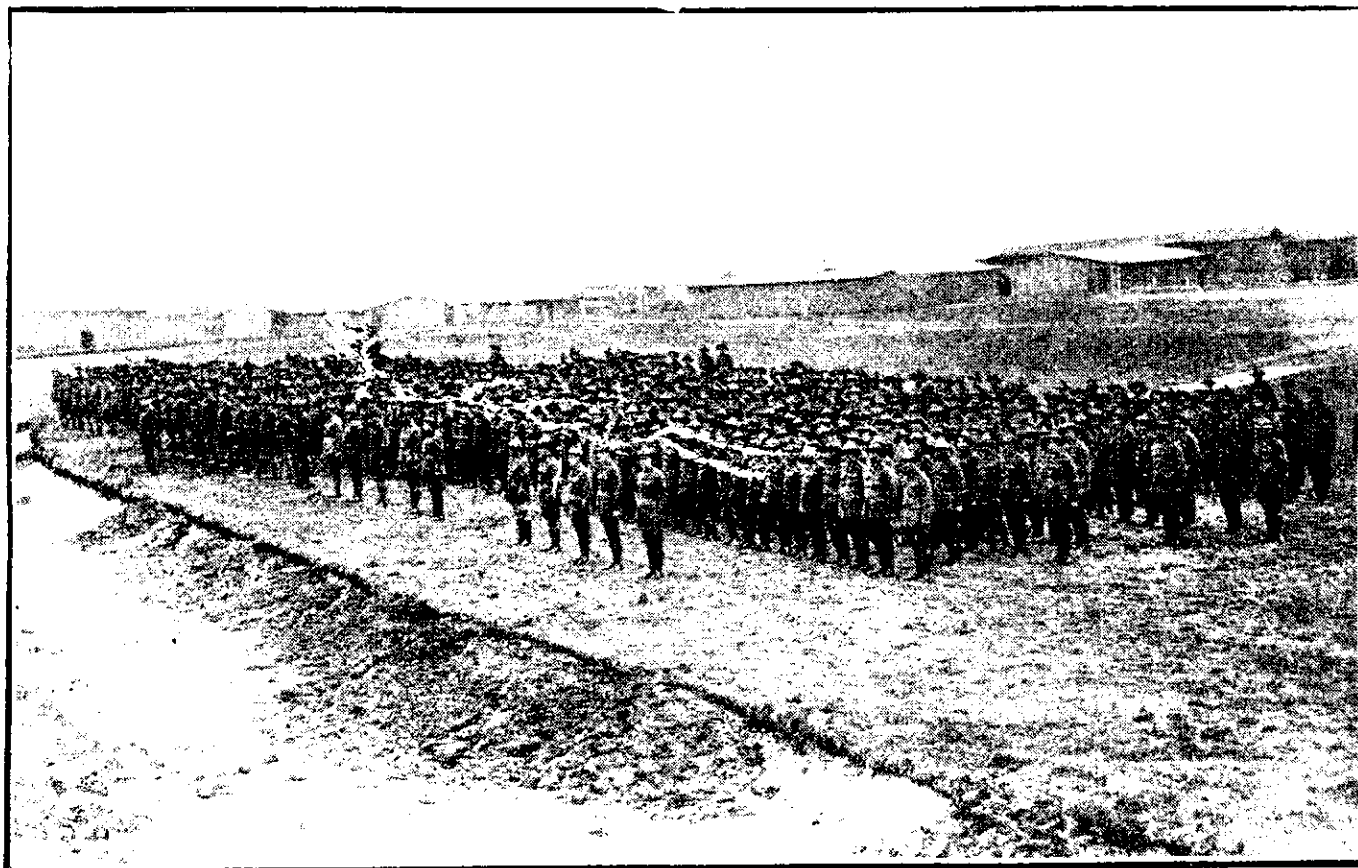
13 NOV 1919

9061

TE REO
OTE
HOKOWHITU-A-TU

NAMA 1.

NOEMA 15, 1919.



Konga morehu ote Ope Maori i whakaaahua i te ki Ingarangi i mua ta ta atu ote ratou hokinga mai.

HE KUPU WHAKAMARAMA.

Kinga iwi, kinga hapu, kinga hui huinga tangata e naho mai nei i runga i nga marae rangatira ote motu nei. Tena koutou te ahua tanga o tatou aitua maha. Kote Reo Ote Hokowhitu-a-tu he pepa i whakaaro tia etahi onga morehu ote Taua Maori i hoki mai nei i te pakanga, hei huarahi e faea ai te toro mete kawe atu ki tatou marae maha, onga korero ote motu e pa ana ki tatou, menga kupu o era atu waahi ote ao, menga whakaaro menga mahara ote hunga e aroha ana kinga

morehu tanga ake ote iwi, menga pito pito toenga ake ote mokai oneone. No reira e koro ma, e kui ma, e pa ma, e whae ma, e tama ma whakarongia mai te reo o ta koutou whanau i hoki mai nei i nuku ote whenua. Kote taonga nui kinga iwi ote ao he nupepa, no reira tukua mai a koutou ota mote pepa nei. Kote utu 10/- hereni i te tau, e 5/- mote hawhe tau, e 2.6 mote koata. Erua nga putanga ote pepa i te marama.

R. MARUMARU,
Etita.
Rata.