

# THE SUMMIT TRACK

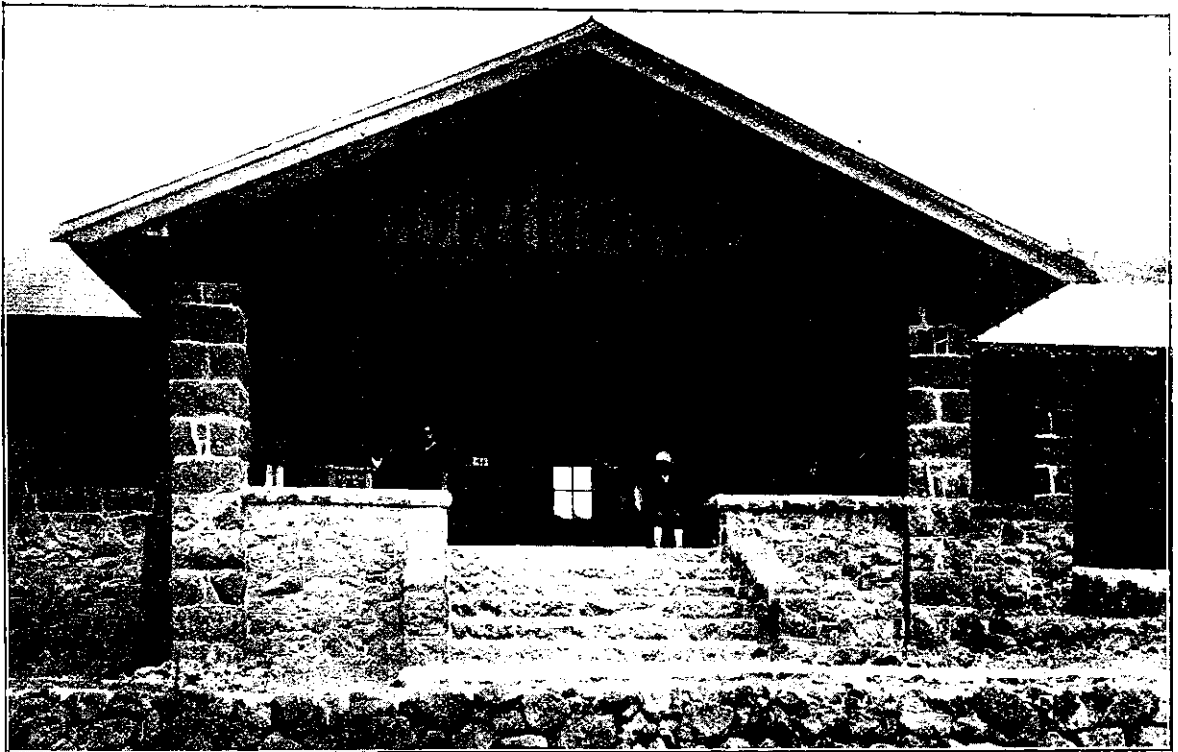
## On Port Hills, Christchurch

By ROBERT LAING

When the organisers of the Canterbury Settlement planned the chief town of the new province, they set aside a large area of over four hundred acres for a city--park and recreation ground. The foresight thus displayed has given to Christchurch one of her finest assets--Hagley Park. Here almost in the heart of the town are beautiful gardens a

To realise space!  
The plenteousness of all, that there are no bounds,  
To emerge and be of the sky, of the sun and moon  
And flying clouds, as one with them!"

For the Summit Road as its name implies runs nearly all the way on the sky line; and provides a series of panoramic views and nearer beauties, that even in New Zealand are not easily rivalled.



THE TOLL HOUSE (Front Elevation)

S. Webb, Photo.

(Hurst-Seeger and McLeod, Hon. Architects)

handsome domain, and sport and recreation grounds that suffice for the needs of many thousands of the citizens. When the city was founded it was comparatively easy to set aside this area; it would be a very difficult if not impossible task now. Yet a similar and even more ambitious scheme is at present being attempted in the neighbourhood of Christchurch, which when finished, will provide the inhabitants with a magnificent walk of some sixty miles over the hilltops from Lyttelton Heads to Akaroa Heads. Few towns in the world will have (for recreative purposes only) a more glorious road. Thus will the citizens of Christchurch in Whitman's words be able

It is my purpose in a couple of short articles to describe roughly some of the glimpses and scenes from the road, as a recommendation to the citizens of Auckland, Wellington and Dunedin to go and do likewise. Let us then start from Lyttelton Heads and imagine ourselves going like the bounds of empire--for a time at least--ever westward. The Lyttelton lighthouse is on the top of a rocky ridge some five hundred feet high. This ridge runs towards the south-west for about twelve miles rising at times in peaks to fifteen hundred feet above sea level. Along the top of the ridge goes the Summit Track, in most places only for foot passengers but widening to a road between Dyer's