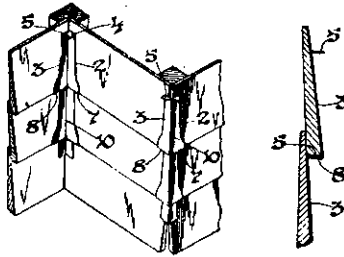


frame in which the bucket is mounted to move up and down and which then retains the bucket in its upright position. This frame at its upper end is, however, so shaped that the restraint against the bucket is removed, so that on the upward travel of the bucket in the guide it will be free to tip when it reaches the top of its travel. A hopper is supported on the framing and so positioned that the bucket, when it tips, will empty its contents into the hopper. From the hopper a movable and extensible chute leads away and serves to convey the contents of the bucket to any desired point.

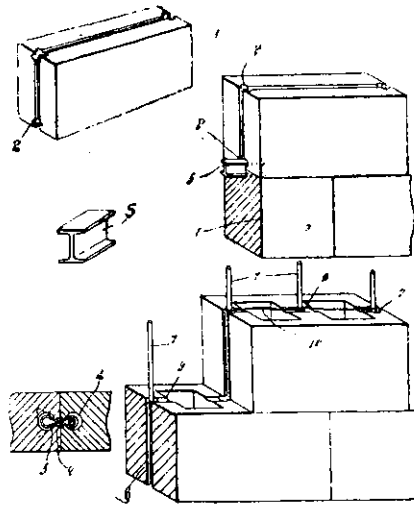
Weather-board Buildings, Corner Covering.—A patent, No. 37,935, has been taken out by John Rose, of Melbourne (Assignee for Victor Macpherson of Normanby Road, South Melbourne) which consists of a corner cover having a body



portion, including a right half and a left half, above each of which is a right wing and a left wing, and below each of which is a right wing and a left wing. The upper right and left wings are preferably outbent, and the lower right and left wings inbent. Other features are comprised in invention.

Concrete Building Construction.—A patent, No. 36,911, has been taken out by A. G. St. Clair Isbister, builder of Palmerston North. In this patent the blocks or slabs are

formed with grooves running along the edges of the block, the interior portion of the grooves being larger than the exterior portion in order to form a lock at the joints and to provide means of reinforcing the joints. The joints may be



reinforced with metal ties or dowels, one portion thereof adapted to be inserted into a groove in the edge of a block, and the other portion inserted into a groove into the edge of the adjacent block.

Skylight.—A patent, No. 37,790, has been taken out by Henry William Ward, plumber, 54 Shetland Street, Roslyn, Dunedin. It consists of the combination of roll tops formed

'Britannia' Egg=Shell Flat AND Dead=Flat Varnishes.

MANUFACTURED by a special process to combine the full preservative qualities of the best varnish with an egg-shell or a dead-flat effect, instead of the usual brilliant finish.

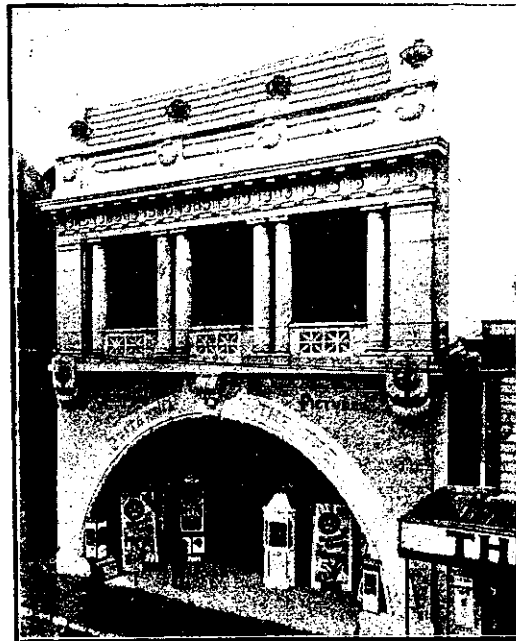
"Britannia" Dead-Flat Varnish dries out hard and perfectly dull; it is guaranteed not to "sweat up," but to maintain a permanent dead-flat surface.

Works: **Robt. Ingham Clark & Co. Limited**
West Ham Abbey, STRATFORD, E. Varnish and Enamel Manufacturers, LONDON

London Offices: **CAXTON HOUSE, WESTMINSTER, S.W.**

E. A. CHRISTIE & CO., Manufacturers' Agents,
86, JERVOIS QUAY :: WELLINGTON, N.Z.

W. A. CHOTE, FARISH ST. PHONE 763.



Britannia Theatre, Manners St., Wellington, built with Golden Bay Cement
Also Agents for:—MILBURN LIME, J. J. CRAIG'S HYDRAULIC LIME, BRUNNER FIRE BRICKS, FIRE TILES, & FIRE CLAY, CHIMNEY POTS, DRAIN PIPES.