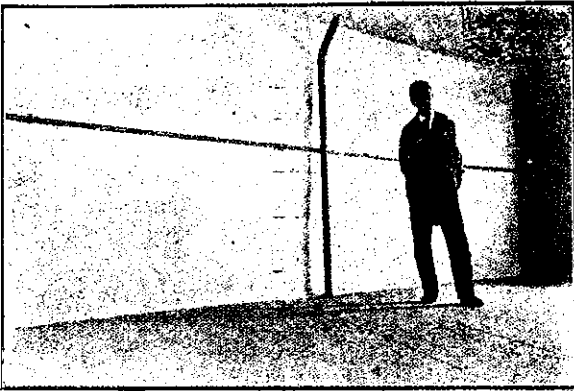


SMOOTH-ON IRON CEMENT

No. 7.

Water-proofs, Dust-proofs and Oil-proofs Concrete.



THIS brick wall leaked badly in rainy weather, covering the factory floor with water. It was made waterproof with SMOOTH-ON Iron Cement No. 7 as follows:—

The whitewash was first removed, then the clean brick surface was painted with SMOOTH-ON Iron Cement No. 7. This was allowed to harden and then a quarter of an inch coating of SMOOTH-ON Iron Cement No. 7 one part, Portland Cement three parts, and sand one part by volume was applied with a trowel. The wall and floor are now dry all the year.

Smooth-On Iron Cement No. 7 for Concrete Floors.

SMOOTH-ON Iron Cement No. 7 is used in combination with Portland Cement. It makes a hard-wearing surface, which, owing to its density, is not affected by gasoline, oil or water. In Garages this is important, especially in the Repair Rooms where oil is constantly spilled on the floor or heavy tools and auto parts allowed to drop causing an abrasion of the cement surface.

Constant attrition, changes of temperature, gasoline, oils, water, etc., quickly cause Garage floors to disintegrate and crumble. SMOOTH-ON Iron Cement No. 7 will make a garage floor Wear-proof and practically everlasting.



Smooth-on prevents dust in Garages.

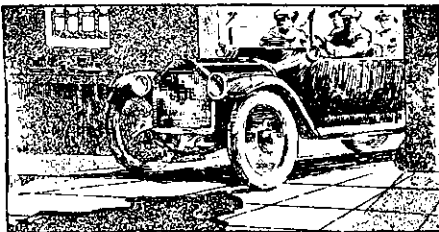
Concrete Floor Made Hard.

GLASGOW'S EXPRESS, 572 JACKSON AVENUE,
JERSEY CITY, N.J., April 17, 1912.

Five years ago I laid a SMOOTH-ON concrete floor in my stable and storage yard. The object being to make the floor waterproof and also to harden it. A layer of Smooth-On was applied over the cinder concrete bottom, allowed to harden, and then cinder concrete applied over it as a top coating, some Smooth-On Iron Cement being mixed in the top coating.

Horses and trucks pass over this floor continually and it has not shown wear or leak. I take pleasure in recommending the Smooth-On Iron Cements for this work.

Very respectfully,
A. D. GLASGOW.



FULL PARTICULARS FROM

ARTHUR D. RILEY & CO., LTD.,

N.Z. Express Co. Buildings,
DUNEDIN.

160 Lambton Quay,
WELLINGTON.

Hall of Commerce,
AUCKLAND.