

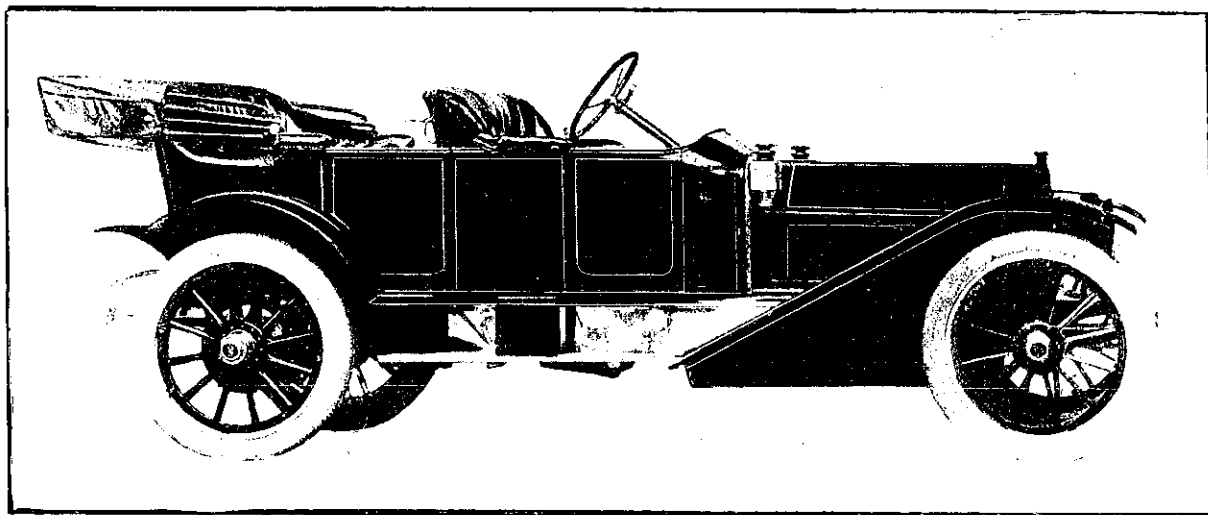
THE "1913" MITCHELL

Nearly seven years ago the Mitchell car made its first appearance in New Zealand, the owner being Mr. Garnet Holmes, of Wellington. A representative of "Progress" had many opportunities of then noting the excellent engine features which have gone so far towards placing the Mitchell in the front rank of American motor-car construction.

But the Mitchell of 1913 is a far remove from its prototype of 1905, and is undoubtedly a great testimony to the wonderful advances made by the manufacturers in so short a period. The new Mitchell, of course, embodies some special refinements, such as complete plant for supplying electric light throughout the car; the self-starter, an equipment perfected and applied by the makers, and

The "Little Six" Model: Five passenger, 6-cylinder, 48-h.p., 3 $\frac{1}{2}$ in x 6in. bore stroke, Bosch dual ignition gate charge, gears three speeds forward and reverse, wheels 36 x 4, fitted with Michelin tyres and demountable rims, wheel base 125 inches, full floating back axle, handsome roomy fore door body, finished in either grey or black, and equipped with hood, windshield, speedometer, five lamps, horn and tools, also one spare rim and carrier. Silent as the foot of time and speedy as the greyhound. Complete £525, with electric lights and self-starter.

Four-cylinder Models: Four passenger, 4-cylinder, 30-h.p., dual ignition, full floating back axle, wheel base, 115 inches, wheels 32 x 4, fitted with



The Mitchell "Little Six" 1912 Model, in contrast with which, the 1913 Model will present some extra refinements

which enables the driver to dispense with cranking, and so start up his engine without leaving his seat by merely depressing a small pedal. Then, again, the long-stroke motor, enclosed valves, and the accessibility of all working parts present in themselves a combination of merit sufficient to justify an opinion that the Mitchell is in the van of reputable makes.

The exceedingly handsome lines of the roomy and beautifully upholstered bodies, coupled with the low setting of the double-drop frames, complete the cursory inspection to a pleasurable degree.

We have received the following interesting specifications from Messrs. J. F. Best, Christchurch, and H. Rollinson, Timaru, agents respectively for the Mitchell:—

Michelin tyres, handsome body, finished in grey or black, and equipped with hood, wind-shield, speedometer, five lamps, horn and tools. Complete £375.

Five passenger, 4-cylinder, 35-h.p., Bosch dual ignition, gate change gears, three speeds, forward and reverse, wheels 36 x 4, fitted with Michelin tyres. 120-inch wheel base, handsome, roomy, fore door, body finished in either grey or black, and equipped with full floating back axle, hood, windshield, speedometer, horn and tools, 5 electric lights, and self-starter, etc., bright parts plated. Complete £425.

Messrs. J. F. Best, Christchurch, and H. Rollinson, Timaru, advise us that they will be pleased to furnish catalogues and arrange demonstrations.