

"Irmo Iron."

made in New Zealand from selected scrap metal

"IRMO" iron possesses a maximum of Tensile Strength and Ductility with perfect Malleability. It is largely used throughout the Dominion, ranks above the Government specification, and gives complete satisfaction. . . . Large stocks on hand. Quotation by wire or post.

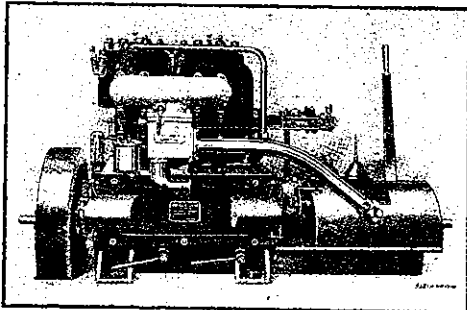
Otago Iron Rolling Mills Co. Ltd.

BURNSIDE via DUNEDIN
Contractors to the New Zealand Government

Chas. Bailey, Jun. Ship, Yacht and Launch Builder

Sole Agent for Auckland Province for

ANDERSON'S Marine OIL ENGINES



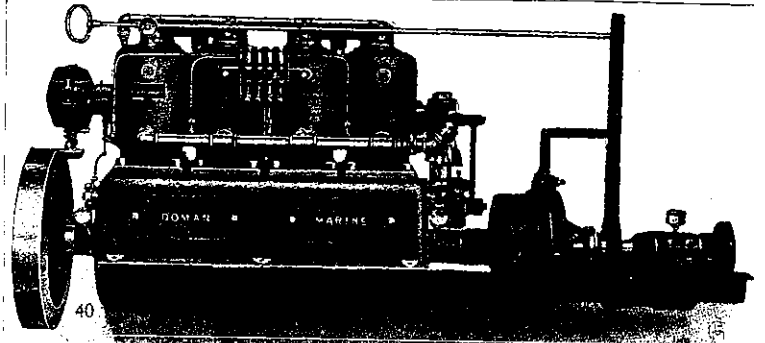
Anderson 14 h.p. Oil Engine

Stationary and Portable Hoists

The Finest Finished and most Reliable Engine on the market

Before buying an oil engine write for catalogue, or call and inspect for yourself

Customs St. W. Auckland



"DOMAN" ENGINES are 4-Cycle.

Make and Break or Jump Spark optional.

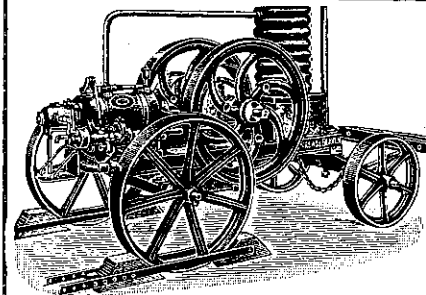
K. W. COILS AUTOMATIC BILGE BAILERS

APLEO MOTOR BOAT ELECTRIC SYSTEM

Spark Plugs, Dry Cells, Hand Meters and Volt Meters, Carbon Remover

Write for List to

COLLINGS & BELL, Launch Builders, PONSONBY, AUCKLAND.



Economic BLACKSTONE

cannot be beaten for

Simplicity

Reliability

Durability

Ease of Operation

and Economy

These engines have a good reserve of power, and develop their rated horse-power at a low speed. They are therefore a bigger engine for the money than most. Can be fitted up for hoisting, pumping, well-driving; largely used for shearing and milking, and because of their simplicity are much appreciated by farmers.

ANDREWS & BEAVEN LTD. CANTERBURY MACHINE WORKS
CHRISTCHURCH

Catalogues on application

Asbestos Slates AND Building Sheets

Lamm Brand

Is listed by the British Admiralty, War Office, India Office and Colonial Office

These Sheets and Slates are absolutely the finest on the market and for strength far exceed any other brand.

The attention of Architects, Builders and Proprietors who require the best materials is specially requested.

For farther details, write or apply to

Francis Holmes,

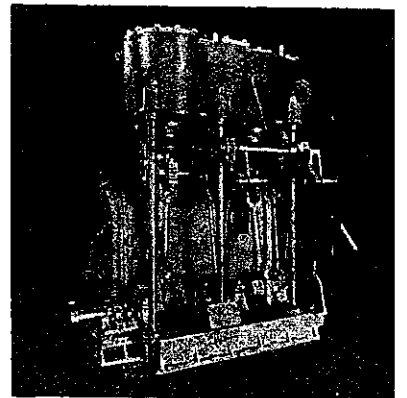
Wellington and Christchurch

P.O. Box 339, Wellington . . . P.O. Box 460, Christchurch

Phoenix Foundry

Boilermakers Engineers, Iron, Brass and Steel Founders

120 h.p. Compound Engines Made by G.F.S. Ltd.



GEO. FRASER & SONS LIMITED
AUCKLAND, N.Z.



NIAGARA Marine Motors
(4-Cycle)

For Cruising, Racing, Fishing, - - Freighting

2, 4, 6-Cylinders
5 to 100 h.p.

Powerful, Dependable
Economical, Graceful

AGENTS:

Sinton & Fisher

(5, 3rd Floor, Edean's Bldgs.)

Lower Queen St. AUCKLAND

SEND FOR LEAFLET