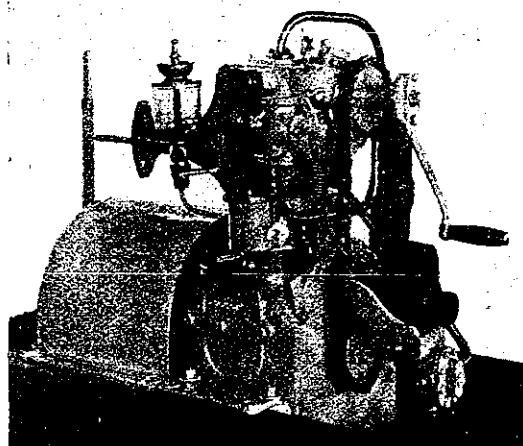


The Neuchatel Asphalte Co.

LIMITED

For REAL ASPHALTE ONLY
Roadways, Floorings, Flat Roofs, etc.

Auckland - 41 Queen Street - Tel. 1578
Wellington - Thorndon Quay - " 2191
Christchurch, 111 Lichfield St. - " 46
Dunedin - 11 Crawford St. - " 337



Thornycroft 7½ h.h.p. Oil (or 9½ h.h.p. Petrol) Motor and Reverse Gear

E. W. HURSTHOUSE and CO.
156 FEATHERSTON STREET

A. Calmon's Asbestos Roofing Slates

ALL SIZES AND IN THREE COLOURS,
Dark Grey, Light Grey and Terra Cotta

THESE GOODS ARE IMITATED BUT NOT SURPASSED

OVER 3000 MEN EMPLOYED IN FACTORY

EXPERT WORKMEN FOR SLATING OR ASPHALTING WORK SENT TO ANY PART OF N.Z. - - ALL WORK GUARANTEED

Telephone 1884

MAINLAND & BARR Sole Agents for N.Z.

Telegrams "Mainland Wellington"

THE LIMMER MINERAL MASTIC ROCK ASPHALTE COMPANY (Estd. 1871)

Owners of the Famous **MONTRONIER SEYSEL MINES**
British Coy.: Head Office, Moorgate Street, London

FLAT ROOFS, FLOORS, VERTICAL & HORIZONTAL DAMP-COURSING.

Also **PAVING BLOCKS**, Plain or Grooved, in any thickness, for Works, Roads, Etc.

NIELSON & MAXWELL LTD.

LONDON and GLASGOW

Iron & Steel Merchants

Special Quotations submitted for

Structural Steel

Cast Iron Mains, Ship & Boiler Plates,
Iron and Steel of Every Description.



PROMPT DELIVERIES A SPECIALITY

Economical Codes for Cabling the Most Diverse Specifications

SOLE AGENTS for N.Z.

BROWN & DUREAU Ltd.

11 Grey Street, Wellington

Telegraphic Address "AGENT Wellington"

Wholesale Only

ENQUIRIES SOLICITED

PATENTS

OBTAINED IN ALL COUNTRIES

Genius is a Quicker Road to Ideas in the shape of inven-
Wealth than Hard Work . . . tions are coinable into £ s. d.

The Progress of the World Heads . earn . more . than
is due to its inventors . . . Hands

BALDWIN & RAYWARD

ENGINEERS & PATENT EXPERTS

OFFICES—

DUNEDIN	JOHN'S BUILDING, CRAWFORD STREET
CHRISTCHURCH GLOUCESTER STREET
INVERCARGILL ESK STREET
AUCKLAND 90 HIS MAJESTY'S ARCADE
NEW PLYMOUTH WALTER BEWLEY, Representative
WANGANUI J. L. STEVENSON, Representative
NAPIER CRANDY & Co., Representatives
HASTINGS J. A. FRASER, Representative
NELSON C. LANGLEY BELL, Representative
BLLENHEIM W. T. CHURCHWARD, Representative
PALMERSTON NORTH RAVENHILL & Co., Representatives

Head Office: 215 Lambton Quay, WELLINGTON