

HAWKE'S BAY.

For the erection of the Maori Agricultural College at Hastings, the tender of Messrs. W. M. Hay & Sons, of that town, has been accepted at £7900.

CANTERBURY.

From reports received Ashburton and Timaru are both busy centres just now of the building trade, and at the former two Christchurch firms have contracts in hand, as well as the majority of local builders being fully engaged. The buildings in course of erection there exceed the sum of £20,000, in which is included the new theatre costing about £5000, with Mr. F. J. Barlow architect, and Messrs. Maynard Bros. contractors, of Christchurch. A new Bank of Australasia, at about £3000, where Messrs. Gregg & Co., of Christchurch, are the contractors, and extensive alterations to the N.Z. Farmers' Co-operative Association's buildings, at about £6000, with Messrs. England Bros. architects, and Messrs. Jas. Smith & Sons contractors. At the latter town (Timaru) bricks seem to be very scarce, which, considering the great activity, is much to be regretted. Christchurch had the foundation stone of the new Government Buildings laid by Sir Joseph Ward the other day, which will cost about £60,000, and are to be erected in Cathedral Square, on a

site which cost £20,000. We also learn a hospital is to be built at Addington and a tower put to the Post Office at the same place.

Mr. H. E. Vincent, of Ashburton, reports that he has let a contract for the new Technical School, in brick, to Mr. Wm. Reid, at £2472; also a small church for the Methodist Church at Methven is now nearing completion by the contractor, Mr. W. E. Olsen; a cottage for the executors of the late F. R. Flatman, Esq., a motor garage for Thos. Bullock, Esq., are both approaching completion by Mr. W. Reid, contractor. Sketch plans have also been prepared for a new Methodist parsonage, new offices for Thos. Bullock, Esq., and additions to Mr. R. D. Johnson's garage.

MARLBOROUGH.

This district is shortly to be the scene of much activity in the building trade. With its drainage scheme, costing about £65,000, and a new Hospital, Post Office, Theatre, Town Hall, improvements amounting in the aggregate to about £22,000; Wairau bridge, £12,000; River Board grant of £5000; New Bank, new Club, etc., Blenheim seems to be the centre of the scene of operations, and we trust supplies will be equal to the demand, both in materials and labour, so that this go-ahead district may not be hampered in its improvements.

OTAGO.

Mosgiel is to have a new building for its Town Hall and Municipal Offices, built in brick, and two-storeyed, of which Mr. E. W. Walden, of Dunedin, is the architect. It will have library and reading rooms on the ground floor, and Council Chamber, large committee room, and Mayor's room, etc., upstairs. The large hall will be 64ft. x 50ft., and have a good stage, with dressing rooms, kitchens, etc., behind, and above it living rooms for the caretaker. The frontage is plastered on the lower storey, and the upper will be in pointed brick with a handsome portico over the entrance.

The Dresden Piano Co. at Dunedin are having plans prepared for a five-storeyed building, with frontage to Princes Street, by Messrs. Salmond & Vanes.

SOUTHLAND.

It is reported that the alterations and additions to the Colonial Buildings have now been definitely arranged, and that Messrs. Walker Bros. have signed the contract for the same at about £3300. The alterations provide that the entrance to the upper storey shall be in Dee Street, the present frontage continued in stone, and the ugly gap, which has been such an eyesore, facing the Post Office, is to be filled up; these sort of alterations do much to improve the already impressive city of Invercargill.

The explanation of this photograph is that it is a splendid representation of a Fire-resisting Floor constructed with Fawcett's Mon'Lithcrete Girders. As will be seen, this fire-resisting floor consists of steel girders (from which the superfluous compression web-metal has been sheared) and concrete. The concrete takes the vertical compression bars in lattice girders. Twisted hoop steel are passed through the web openings and buried in the concrete.

A floor built of this construction has generally greater strength, more rigidity, and is more cheaply constructed than one constructed with the ordinary joints or re-inforcing bars. It was owing to these features that the Consulting Engineer selected Mon'Lithcrete Construction for the new General Offices for the Humber Commercial Railway and Dock Company, Tinningham. This system, being founded on such sound lines is becoming universally adopted by the leading architects and engineers, and as an instance of this we may state that The Fawcett Construction Co., Ltd., have on hand the following new buildings:—12 Blocks Peabody's Buildings at Fulham, Hampstead and North West London General Hospital, North Staffordshire Infirmary, London City

and Midland Bank, Tottenham & Edmonton Gas Co.'s new office, Winchmore Hill, New

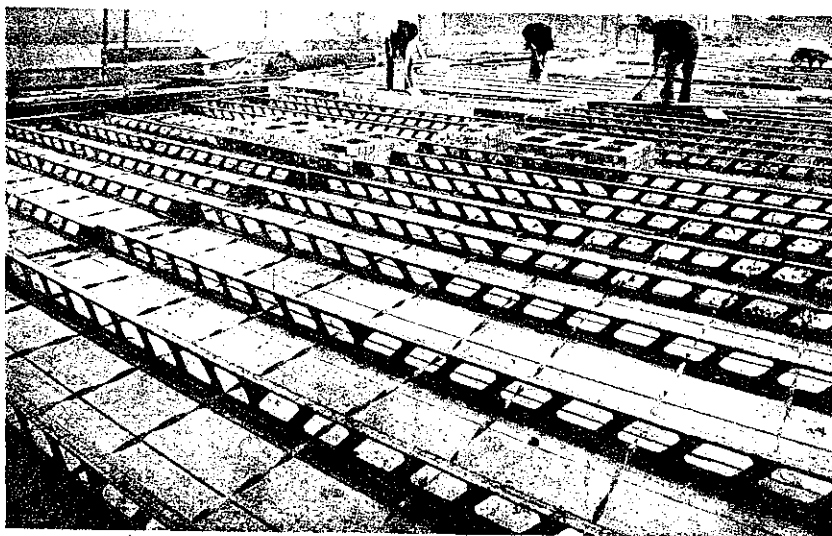
Derby, Addition vincial Bank, Stratford, County Hall Extension, Winchester College, Messrs.

FAWCETT'S "MON'LITHCRETE" FIRE-RESISTING FLOOR and ROOF CONSTRUCTION

at Nine Blocks of Peabody Buildings, Camberwell Green, London. Victor Wilkins, Esq., Architect.

Messrs. Walter Lawrence & Son, Builders, who have recommended this floor for other important work in preference to ordinary joists and concrete.

The same construction has been selected by the Humber Commercial Railway and Dock Company's Engineers for the New General Offices at Tinningham.

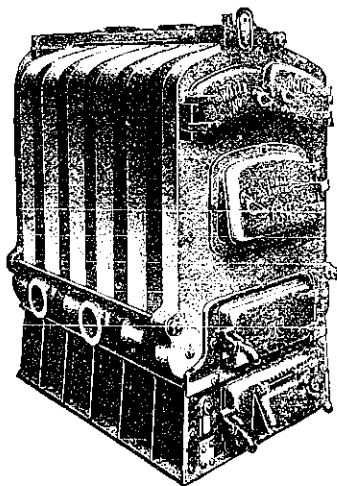


FOR THE FIRST TIME THE BUILDING WORLD CAN OBTAIN MONOLITHIC CONSTRUCTION ABSOLUTELY RELIABLE AS TO STRENGTH AND RIGIDITY AT LESS COST THAN ORDINARY JOISTS AND CONCRETE.

Carriage and Wagon Works for Great Central Railway, Dunkinfield, new Warehouse for Great Central Railway to Barsuley, new Generating Station, Wood Green N., London and Pro-

Full particulars and prices may be had from the Agents,

Messrs. E. W. HURSTHOUSE & Co.,
150 Featherston Street, Wellington.



"IDEAL" Boilers and Radiators

For warming all classes of Buildings by Hot Water and Steam

IDEAL BOILERS for hot-houses, Greenhouses, and Conservatories,

IDEAL WATER HEATERS for supplying Water, hot and plenty, for Private Houses, Hotels, Hospitals, Laundries, Bathing Establishments, Dairy Factories, etc.

MOST POWERFUL AND ECONOMICAL WATER HEATERS MADE

IDEAL HEATING APPLIANCES represent the ripest ideas and most advanced development in the manufacture of heating goods, and are everywhere recognised as the standard product. Specified by leading architects and heating engineers all over the world.

Jenkins & Mack

94-100 Featherston Street, Wellington

Sole Agents for New Zealand