

The high quality of 'IRMO' Iron is vouched for by leading Engineering Firms!

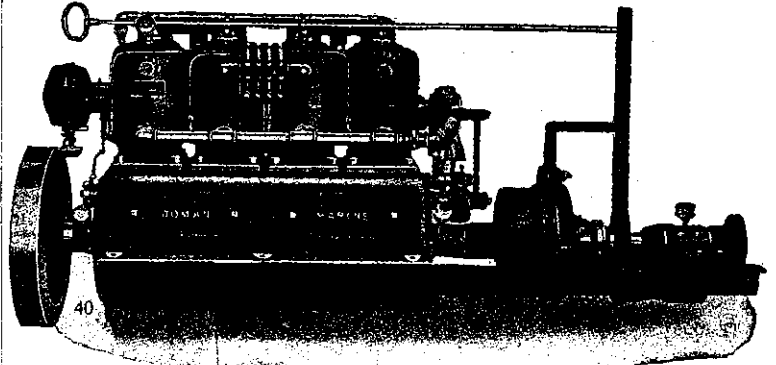
Cossens & Black, Limited, Engineers and Ironfounders, Dunedin, write:

"We have been using "IRMO" Iron in bars and angles of varying sizes for the last fifteen years or more, manufacturing therefrom forging of all descriptions, ring, angle iron flanges, in fact, anything that can be made from iron, and we have no hesitation in stating that the iron is first-class."

COSENS & BLACK, LTD.

Isn't it to your interest to use "IRMO" New Zealand Made Iron, when you are assured that it is equal to the best and superior to most of the imported brands? Send for booklet with tables of sizes, weights, &c.

**OTAGO IRON ROLLING MILLS CO.**  
BURNSIDE via DUNEDIN Limited



**"DOMAN" ENGINES are 4-Cycle**

Make and Break or Jump Spark optional.

K. W. COILS      AUTOMATIC BILGE BAILERS  
APLEO MOTOR      BOAT ELECTRIC SYSTEM

Spark Plugs, Dry Cells, Hand Meters and Volt Meters, Carbon Remover

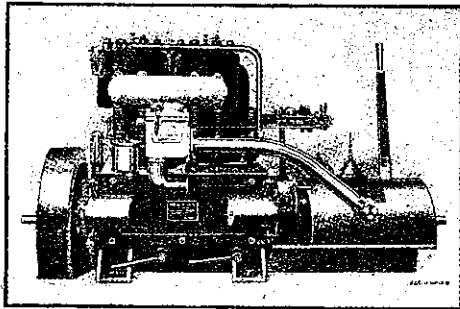
Write for List to

**COLLINGS & BELL, Launch Builders, PONSONBY, AUCKLAND.**

**Chas. Bailey, Jun.**      Ship, Yacht and  
Launch Builder

Sole Agent for Auckland Province for

**ANDERSON'S Marine OIL ENGINES**



Anderson 14 h.p. Oil Engine

**Stationary and  
Portable Hoists**

The Finest Finished and most  
Reliable Engine on the market.

Before buying an oil engine write  
for catalogue, or call and  
inspect for yourself

**Customs St. W.**  
Auckland

**Economic Blackstone Kerosene Engines**

These Engines have never been beaten in competition, nor can they be for—

**SIMPLICITY**—Less working parts than most oil Engines.

**RELIABILITY**—No electrical connections; kerosene is always easily obtainable.

**DURABILITY**—These Engines are English made.

**EASE OF OPERATION**—All users are well pleased, because they start easily.

These Engines have good reserve of power and develop their rated power at a low speed; they are therefore a bigger engine for the money than most

**ANDREWS & BEAVEN Ltd.**  
FULL PARTICULARS POSTED  
ON APPLICATION      **CHRISTCHURCH**

**Asbestos Slates**  
AND  
**Building Sheets**

**Lamm Brand**

Is listed by the British Admiralty,  
War Office, India Office and  
— Colonial Office —

These Sheets and Slates are absolutely the finest on the market and for strength far exceed any other brand.

The attention of Architects, Builders and Proprietors who require the best materials is specially requested.

For further details, write or apply to

**Francis Holmes,**

Wellington and Christchurch

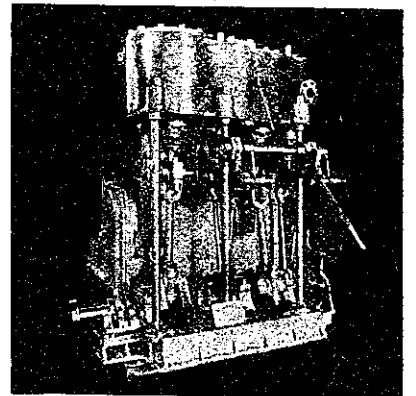
P.O. Box 339, Wellington

P.O. Box 460, Christchurch

**Phoenix  
Foundry**

**Boilermakers  
Engineers,  
Iron, Brass  
and Steel  
Founders**

120 h.p. Compound Engines  
Made by G.F.S. Ltd.



**GEO. FRASER & SONS LIMITED**  
AUCKLAND, N.Z.



**NIAGARA**

THEY RUN UNTIL STOPPED.

**MARINE MOTORS**

**NIAGARA  
Marine Motors**  
(4-Cycle)

For Cruising, Racing,  
Fishing, - - Freighting

2, 4, 6-Cylinders  
5 to 100 h.p.

Powerful, Dependable  
Economical, Graceful

AGENTS:

**Sinton & Fisher**  
(5, 3rd Floor, Edean's Bldgs.)

**Lower Queen St.**  
AUCKLAND

SEND FOR LEAFLET