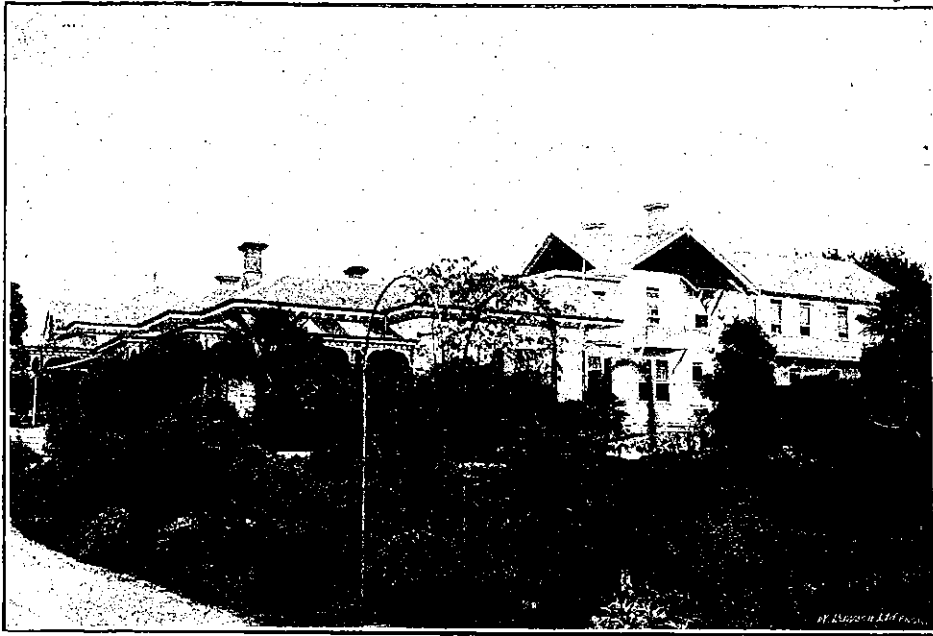
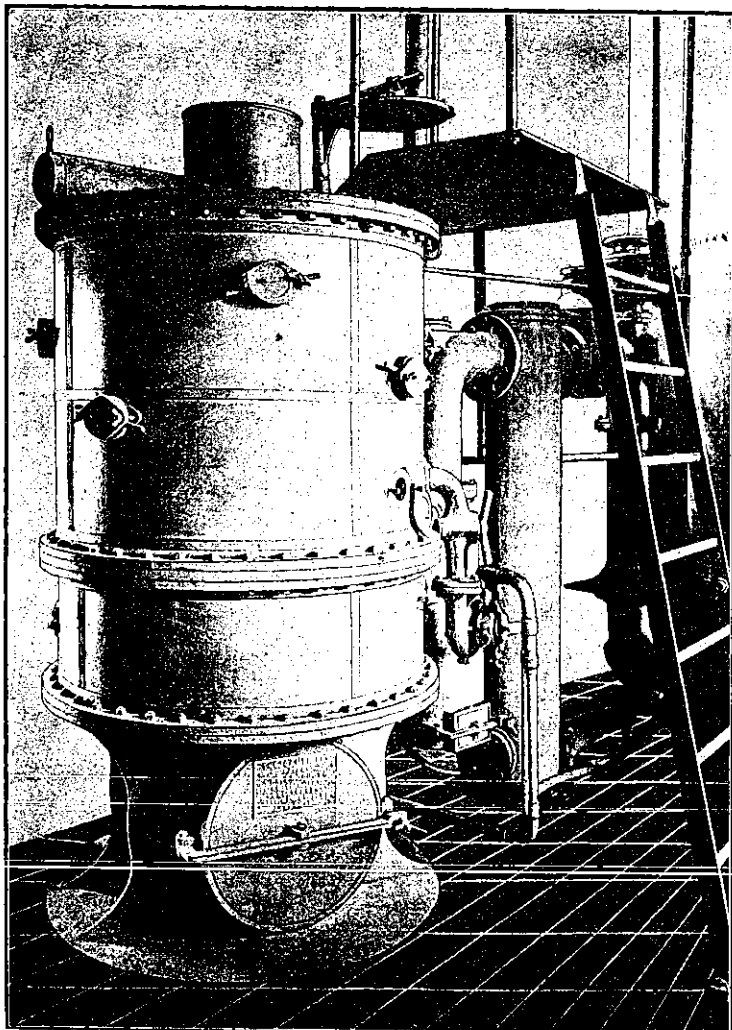


"MON DESIR," - - TAKAPUNA, AUCKLAND

Proprietor, Mr. AUDUS RAYNES



This fine Hostelry is built in a garden of 4½ acres, which extends to a magnificent beach. The proprietor has enjoyed the patronage of seven Governors, and aims to provide his guests with all the comforts of Club life.



The Cambridge Gas Producer..

This illustration is reproduced from a photograph of a 135 B.H.P. Cambridge Generator installed in a Flour Mill in Dunedin. The engine supplied by it runs at an average load of 100 B.H.P. On its test run this plant consumed half a ton of coal in a day of about nine hours. The fuel is lignite coal, costing 5/- per ton at the mill. The fuel consumption works out at 1½ lbs. and the cost at .033 pence, or about

**One thirtieth of a penny per
brake horse power per hour**

Electrical power would have to be sold at about one twenty-fifth of a penny per unit to equal this result.

Booth, MacDonald & Co.

Ltd., Christchurch, *Sole Licensees*

Branches - AUCKLAND, HASTINGS, TIMARU