

The high quality of 'IRMO' Iron is vouched for by leading Engineering Firms!

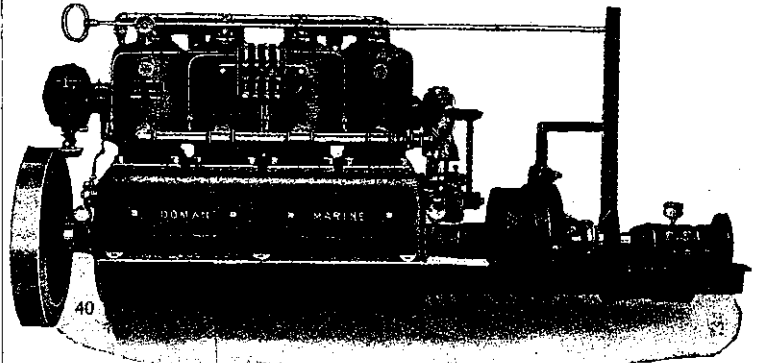
Cossens & Black, Limited, Engineers and Ironfounders, Dunedin, write:

"We have been using 'IRMO' Iron in bars and angles of varying sizes for the last fifteen years or more, manufacturing therefrom forging of all descriptions, ring, angle iron flanges, in fact, anything that can be made from iron, and we have no hesitation in stating that the iron is first-class."

COSENS & BLACK, LTD.

Isn't it to your interest to use 'IRMO' New Zealand Made Iron, when you are assured that it is equal to the best and superior to most of the imported brands? Send for booklet with tables of sizes, weights, &c.

OTAGO IRON ROLLING MILLS CO.
BURNSIDE via DUNEDIN Limited



"DOMAN" ENGINES are 4-Cycle

Make and Break or Jump Spark optional.

K. W. COILS AUTOMATIC BILGE BAILERS
APLEO MOTOR BOAT ELECTRIC SYSTEM

Spark Plugs, Dry Cells, Hand Meters and Volt Meters, Carbon Remover

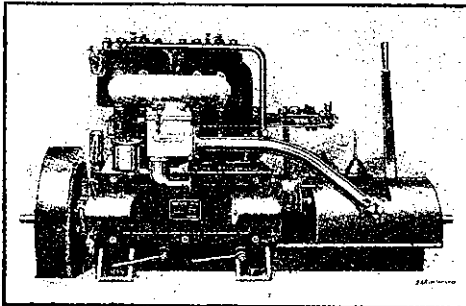
Write for List to

COLLINGS & BELL, Launch Builders, PONSONBY, AUCKLAND.

Chas. Bailey, Jun. Ship, Yacht and Launch Builder

Sole Agent for Auckland Province for

ANDERSON'S Marine OIL ENGINES



Anderson 14 h.p. Oil Engine

Stationary and Portable Hoists

The Finest Finished and most Reliable Engine on the market.

Before buying an oil engine write for catalogue, or call and inspect for yourself

Customs St. W.
Auckland

Economic Blackstone Kerosene Engines

These Engines have never been beaten in competition, nor can they be for—

SIMPLICITY—Less working parts than most oil Engines.

RELIABILITY—No electrical connections; kerosene is always easily obtainable.

DURABILITY—These Engines are English made.

EASE OF OPERATION—All users are well pleased, because they start easily.

These Engines have good reserve of power and develop their rated power at a low speed; they are therefore a bigger engine for the money than most

ANDREWS & BEAVEN Ltd.
FULL PARTICULARS POSTED ON APPLICATION **CHRISTCHURCH**

Asbestos Slates
AND
Building Sheets

Lamm Brand

Is listed by the British Admiralty, War Office, India Office and Colonial Office

These Sheets and Slates are absolutely the finest on the market and for strength far exceed any other brand.

The attention of Architects, Builders and Proprietors who require the best materials is specially requested.

For further details, write or apply to

Francis Holmes,

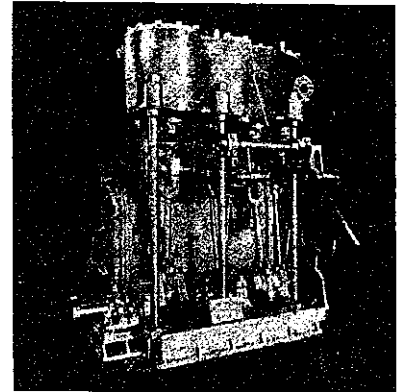
Wellington and Christchurch

P.O. Box 339, Wellington P.O. Box 460, Christchurch

Phoenix Foundry

Boilermakers
Engineers,
Iron, Brass
and Steel
Founders

120 h.p. Compound Engines
Made by G.F.S. Ltd.



GEO. FRASER & SONS LIMITED
AUCKLAND, N.Z.



NIAGARA
Marine Motors
(4-Cycle)

For Cruising, Racing,
Fishing, -- Freighting

2, 4, 6-Cylinders
5 to 100 h.p.

Powerful, Dependable
Economical, Graceful

AGENTS:

Sinton & Fisher
(5, 3rd Floor, Endean's Bldgs.)
Lower Queen St.
AUCKLAND

SEND FOR LEAFLET