

New Tunnel Launch from the Yards of Messrs. Logan Bros., Auckland.

We illustrate on this page the new tunnel launch, a remarkable craft built by Messrs. Logan Brothers for Messrs. R. O. Clark & Co., Ltd.

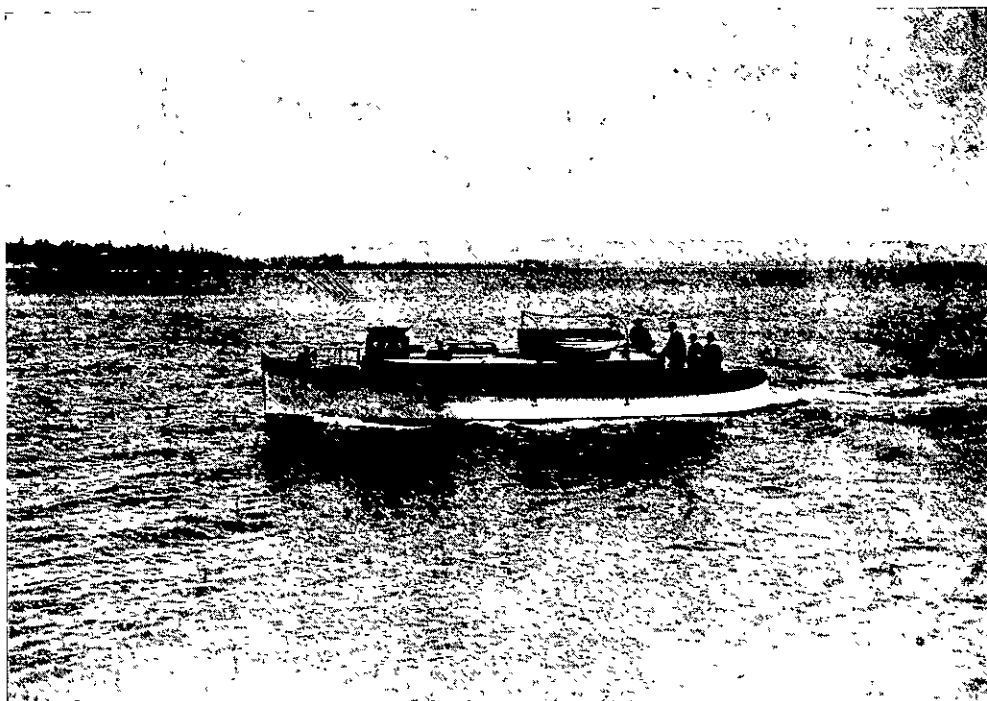
She is most commodious, as may be seen from her dimensions, which are: Length, 48 feet, beam 11 feet, draught 18 inches. She is diagonally built with three skins, has a roomy saloon, a galley, an engine room and other rooms. In the saloon there are folding bunks and a folding table; there is a conning tower, lavatory, cupboards of all sorts, and ample locker accommodation. The upholstering is everywhere good, having been carried out by Messrs. Winks & Hall, who are famous for their superior workmanship.

There are two Kelvin engines, each of 15 h.p. double cylinder (4 cycle, bore 5 1/2, stroke 8), of 530 revolutions, driving two propellers 22 inches diameter in the tunnel. These engines possess several novel features, amongst which may be noted the absence of accumulators, batteries, coils, etc. They start upon the magneto low tension, which ensures an immediate start with the first turn of the handle; and a patent starting device is fitted on enabling the engine to be started without cranking. A point which appeals to experience of marine motors is the extreme accessibility of the pistons,

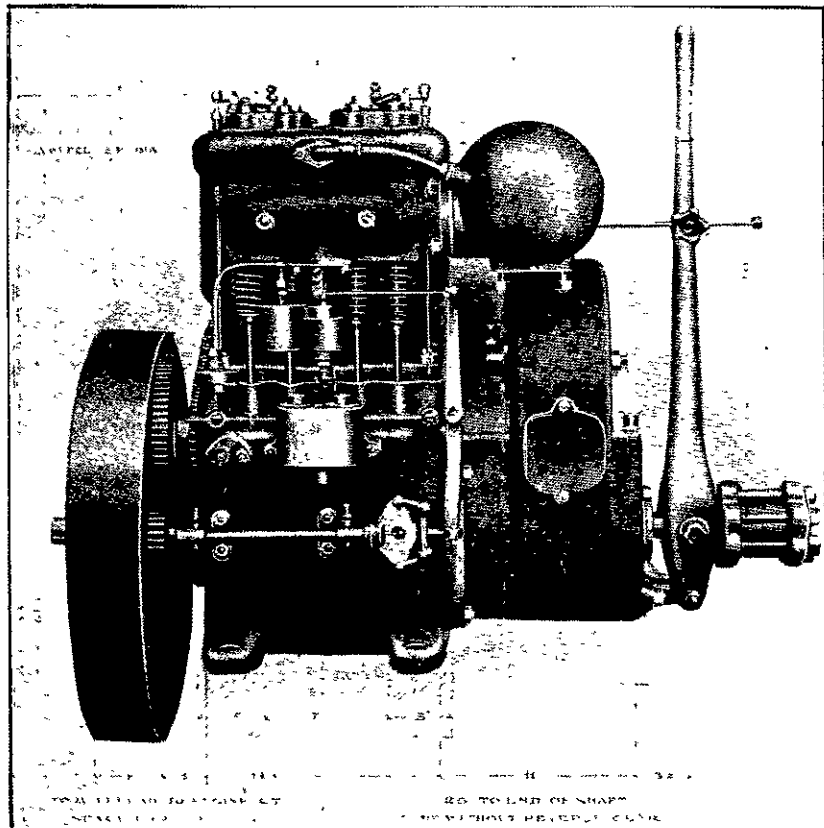
jectionable smell is eliminated. All piping is of copper, no iron being used in the installation. These engines, running quietly, with a minimum of vibration, drive the boat at nine knots.

The controlling system is unique, and has been specially designed to enable the boat to be handled by one person. Two small

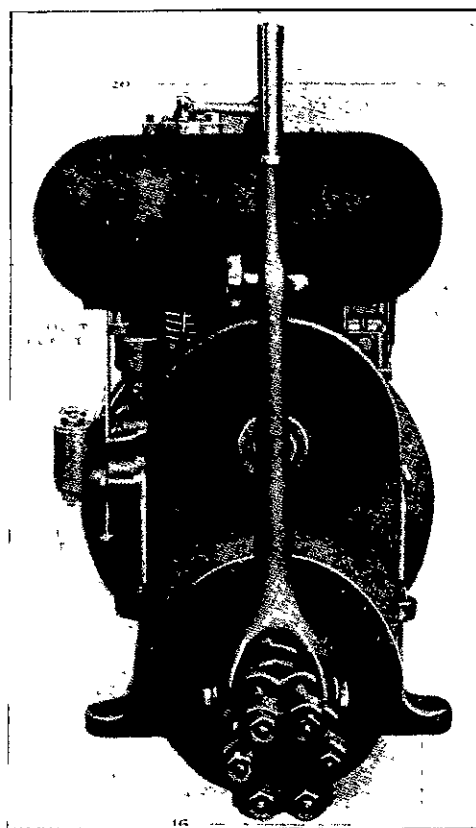
In the French Chamber of Deputies on Friday, the 20th inst., the Marquis de Dion moved a resolution in favour of the bestowal of the Cross of the Legion of Honour upon men like Messrs. Archdeacon, Bleriot, Gabriel Voisin, and Esnault-Pelterie, who have devoted their lives to aviation. He also asked that the Cross should be awarded to Messrs. Wilbur Wright and Henry Farman for their pioneer efforts in aviation. The resolution was adopted unanimously.



MESSRS R. O. CLARK & CO'S NEW TUNNEL LAUNCH BY MESSRS. LOGAN BROS., AUCKLAND.



KELVIN ENGINE, 5-20 H.P., ON TUNNEL LAUNCH (Port view)



KELVIN ENGINE (End view).

which can be removed without disturbing the cylinders, a large opening being provided in the crank case for the purpose. A clean supply of fuel is secured by passing the fuel (benzine) through filters attached to the carburetters. The reversing gear is attached direct to the engine and therefore can not get out of line. The engines exhaust through water-cooled silencers below the water line; therefore there are no hot pipes and no noise, and all vestige of ob-

hand wheels in the cockpit alongside the steering wheel enable the steersman to control either or both engines in "ahead," "neutral," or "astern" positions. Thus, although the boat's dimensions are so large she can be very easily handled.

The conning tower has two similar wheels close to the steering wheel connected similarly to the engine, enabling the boat to be controlled under cover. A telegraph to the engine is also installed here.

Keep your wheels in alignment, if you want to avoid troubles. Palmer's method for testing wheel parallelism is the best, and the best known.

* * *

Now that the Chamber of Deputies and the Municipal Council of Paris have given their official support to flying machine experiments by voting funds for prizes, of which the details will be decided later on, public enthusiasm for the new movement is rapidly growing, and scarcely a week now passes without some new trial or race being produced.