

BUNGALOW HOUSE, NEW BRIGHTON.



DINING ROOM OF BUNGALOW HOUSE

England Bros , Architects.

Roman Catholic Church, Kilbirnie.

The foundations of the above church have been laid, and a further advancement will be made in stages for the requirements of the congregation. The above design is in pressed brick, with stone dressings. The interior will be finished in pressed sand bricks, treated in harmonious colours, with an open timber roof. The roof will be covered with Eternit asbestos slates, relieved with coloured bands. Mr. T. J. Yourelle, of Mr. J. C. Maddison's office, is the architect. (Page 248.)

finished with the ordinary baked clay tiles. The bungalow is on the whole an ideal sea-side place. The architects are Messrs England Brothers, and the contractors Harris and McGillivray.

Palmerston North.

A large residence near Palmerston North, designed in the Italian villa style, has just been completed for Mr. Albert Keiller. Occupying, as it does, a commanding position on the Fitzherbert hills, overlooking the town, it shows up to great advantage, being visible for miles in all directions

ETERNIT

(REGISTERED)

Asbestos Cement

SHEETS for Ceilings, inside and outside Walls and Partitions, and ROOFING SLATES

Fire-resisting, easily erected, neither expands nor contracts, does not rot, crack, oxidize, shrink or crumble.

On the authorised Admiralty list; on the War Office list. Adopted by H M. Board of Works. Extensively used in various Public and Private Buildings throughout the Dominion.

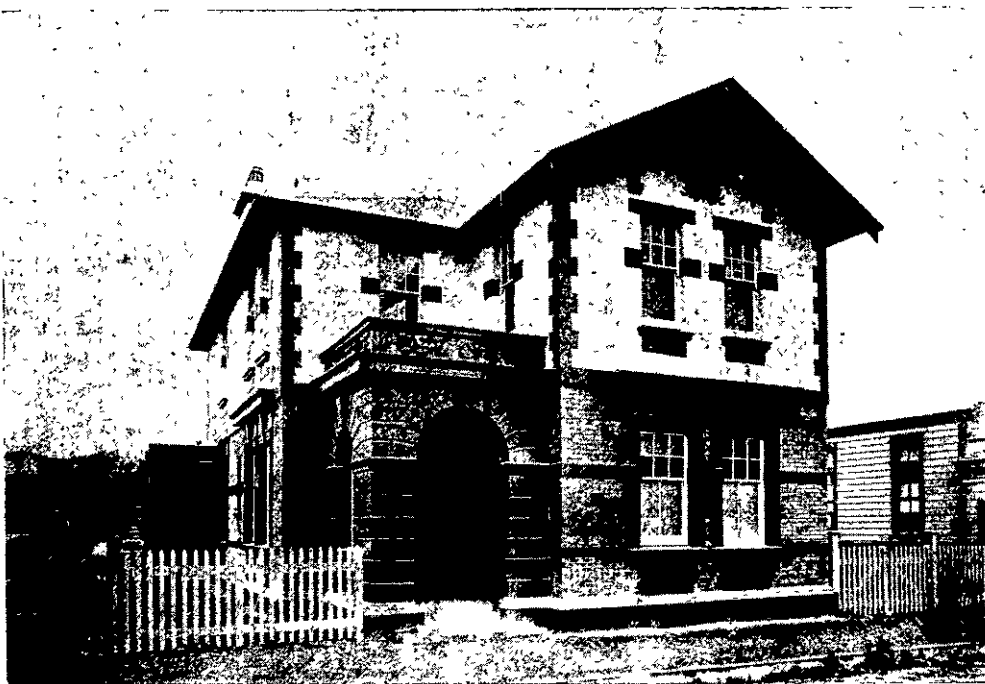
Care should be taken that when "Eternit" is specified, other inferior articles are not substituted.

Full Particulars, Samples and Instructions upon Application to

MURRAY, ROBERTS & CO.

WELLINGTON

Agents for New Zealand



POST OFFICE, UPPER HUTT. Opened recently by the Prime Minister.

Bungalow House, New Brighton.

A striking example of the usefulness of asbestos roofing and walling sheets is shown in the bungalow house recently erected in Keppel street, New Brighton. The whole of the outside and inside walls have been covered with Calmon's asbestos slates, with strappings over the joints. The effect is very quaint. The joints in the interior of the bungalow have been covered with chamfered Rimu batons oiled and worked out in the form of panelling. Here the effect is artistic and pleasant. The roof is of Calmon red slates, the ridging being

The entrance is under a 14ft wide Porte Cochere leading through a vestibule into the 24ft x 16ft. staircase hall, from which a handsome 5ft. wide staircase leads to the Upper floor. This staircase hall is lighted by two 16ft. wide windows, one on the ground and the other on the upper floor. In the centre of each of these windows is a glass door leading respectively to a 35ft. long and 21ft wide verandah on the lower floor, and on the upper a balcony of similar size. On the ground floor, the smoking room lies to the right of the staircase hall, and has a large window leading on to the above verandah, besides a corner bay window 11ft. by 5ft. 6in., commanding magnificent views of the surrounding country. On the left of the staircase hall, an inner, or lounge hall, 22ft. x 19ft., is approached through "grilled" arches. Passing through this apart-