



RESIDENCE OF MR. O. BEERE, TINAKORI ROAD

Chapman Taylor, Architect

ONE OF THE INTERIORS OF MR. BEERE'S HOUSE.

These two pictures are reproductions of a charming house built in Tinakori Road and designed by Mr. Chapman-Taylor, architect and craftsman. There are no shams about this house, inside or out.

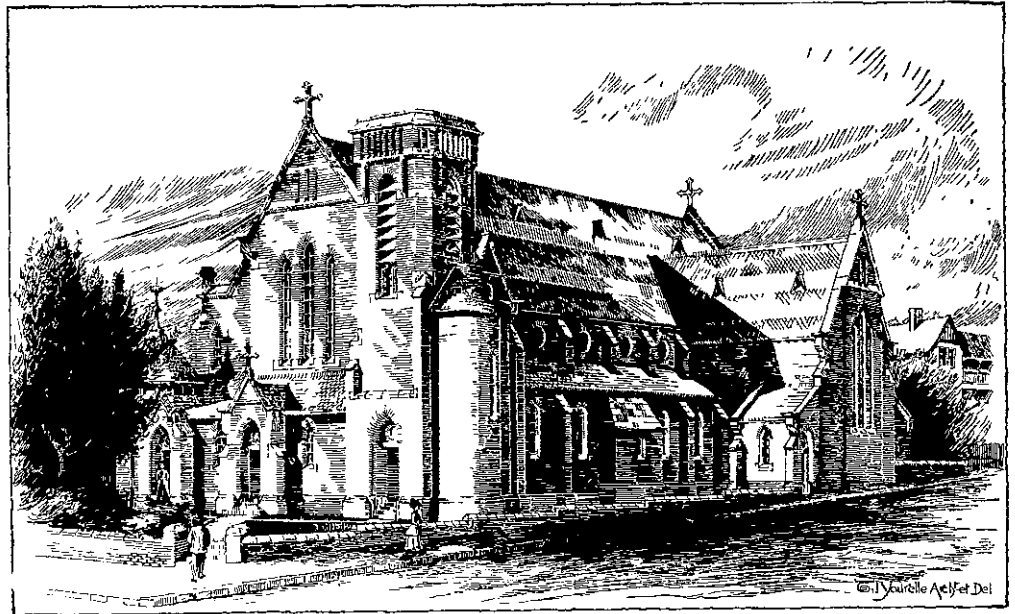
The great jarrah beams supporting the floor above; the solid door-posts and plain tinted wall spaces all combine to give a feeling of modest tranquillity. The comfortable ingle fireplaces free from draughts give that sense of cosiness so seldom seen in colonial houses. All the woodwork is oiled jarrah with old fashioned latches and hinges to the doors. None of the trumpery rubbish made to sell, not to use, here. These latches are made by hand by Englishmen and will last for ever. More than that, they cost no more than the aforesaid rubbish.

The rooms are fitted with bookshelves, sideboard, seats, etc., which being built in, look as furniture should, so that one could not imagine the room without them. All the bedrooms have dressing tables, wardrobes, etc., built in and all designed in keeping with the rest.

This review would not be complete without mention of the motor house, which, roughest like the rest, has a great

rough jarrah beam over the doorway. Quite free from ornament it subordinates itself to the rest with becoming modesty.

In the house the walls instead of being lined with wood are covered with Eternit Asbestos sheets and distempered and are therefore practically fireproof.



ROMAN CATHOLIC CHURCH, KILBIRNIE

T. J. Youelle, Architect. (See next page.)

Cammell, Laird & Co. Ltd.

Cyclops Steel & Iron Works

SHEFFIELD - - ENGLAND

Contractors to the British War Office and Admiralty

Mining.—Jumper Steel, Shoes and Dies, Mining, Coal-cutting and Boring Steels, Pulleys, Sheet and Plate Steels, etc

Tool Steels.—High-Speed, Standard, Shear and Compound Mining and Coal-cutting Machine Steels, also Steels for special purposes, etc

Railway.—Steel Rails, Fish Plates, Sole Plates, Billets, Blooms-Bars, Tyres, Axles, Springs, Buffers, Points and Crossings.

Marine.—Cranks and Propellor Shafts, Armour Plates, Sheet and Plate Steels, Castings and Forgings (any size or weight)

Engineers and Foundries.—Tool, Sheet and Plate Steels, Files, Twist Drills, Tool and Tool Holders, Milling Cutters, and Steel of all kinds

Catalogues.—Catalogues furnished on application

New Zealand Office:

CAMMELL, LAIRD & CO. LIMITED

T. A. PETERKIN, Manager

7 & 8 Bank of Australasia Chambers, Wellington

Phone 2290

P.O. Box 652

AGENCIES :

DORMAN LONG & CO.'S STANDARD STEEL JOISTS AND GIRDERS

NORTH EASTERN STEEL CO.'S STEEL RAILS AND FISH PLATES

KINNEAR STEEL ROLLING SHUTTERS—
Protection against Fire and Burglar
Operated with Ease and Speed

MANNESMANN STEEL SOLID DRAWN WATER PIPES

INDENTED STEEL BARS FOR FERRO-CONCRETE

FERGUSON'S GENUINE WHITE LEAD

"TITAN BEST" AND "MARS" GALVANIZED CORRUGATED IRON

WE ALSO CONTRACT FOR :

CAST WATERWORKS PLANT

STRUCTURAL STEEL FOR BUILDINGS AND BRIDGES

PORTLAND CEMENT

JOHN DUTHIE & CO.

LIMITED

WELLINGTON