

The Town Hall, Auckland.

The architectural style of the building is a free treatment of the classic. The material used for the facades is "Oamaru" stone with a bluestone base. For the main Queen and Grey streets fronts a columnar method of design has been adopted. These two elevations terminate at the apex formed by the junction of the two streets, in a segmental colonnade, surmounted by a tower 18 feet square and 130 feet high, with provision for 9 feet diameter clock dials. In front of this colonnade is a terrace enclosed by a stone balustrade with provision for a statue at the extreme angle.

A feature of the construction of the building is the arrangement of the foundations. The great depth of a good rocky stratum necessitated a special treatment. Accordingly concrete piers have been carried down at intervals to the rock and the spaces spanned by concrete beams carrying the walls. All these beams are reinforced with "Kahn" steel bars. This method of piers and beams has been used by the architects, Messrs. Clark, in several important buildings in Australia.

atus of which will be situated in the cellar underneath. The orchestra platform is made to slide under the choir front, thus giving more dancing space on the main floor when required, making a total area of 122 feet by 75.

The small hall comprises a ground floor and gallery, accommodating together 800 persons and 150 in the chorus gallery.

The galleries of the two halls are constructed on the most up-to-date principles, being carried by steel cantilevers, thus leaving the ends of the halls free from obstruction both for seeing and dancing. The main entrance to both halls is in Queen street, a grand staircase 12 feet wide leading down to a large crush room off which are the cloak rooms before mentioned. Above the entrance vestibule is a large promenade and lounge on the level of the galleries.

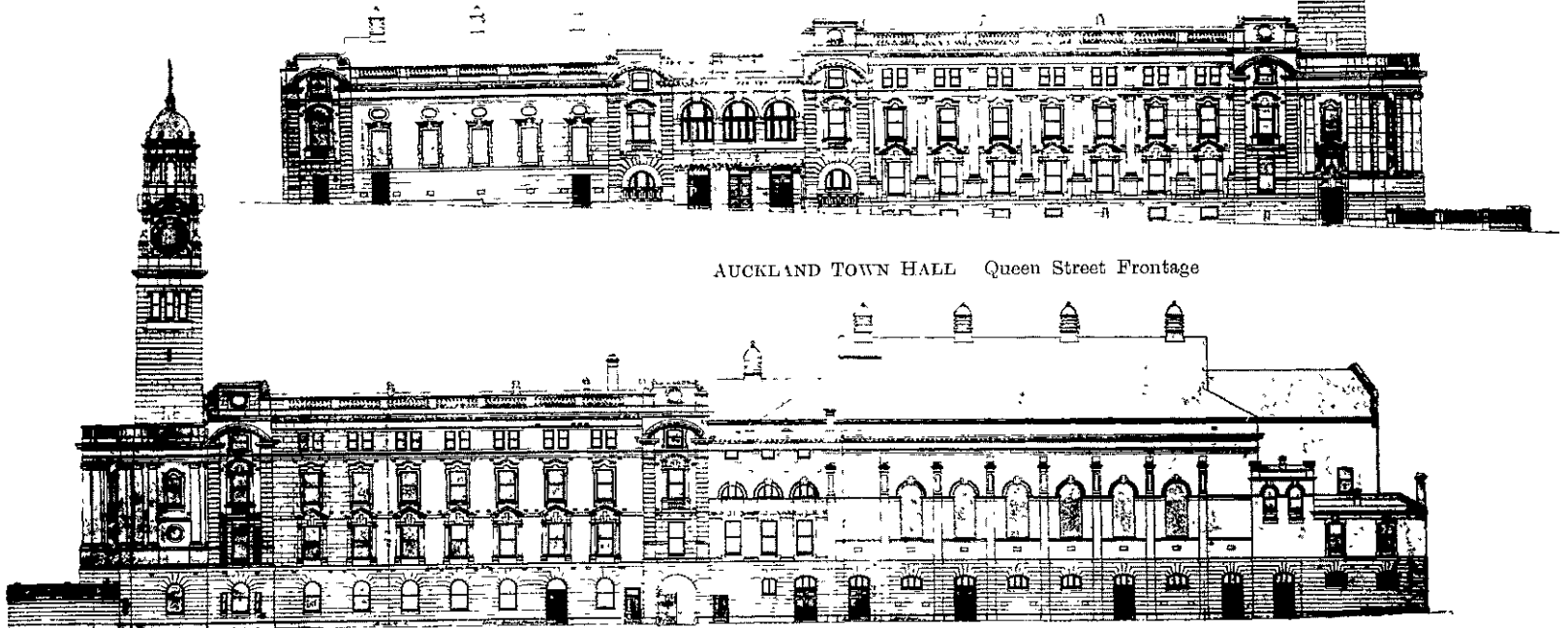
The entrance to the municipal offices is near the angle in Queen street, the vestibule to the same leading to a wide staircase in the tower communicating with a large vestibule on each floor, and there is an electric elevator in the centre. Off these vestibules access is got to the Mayor's suite, Councillors' room, library, Town

chair lift being conveniently placed between the halls.

The tiling, lead lighting of the windows and the ornamental ceilings of halls, Council chamber and entrances will be features in the artistic finish of the interior.

The Harbour Board's new offices at Auckland are to cost £60,000, not £6,000 as was made to appear by a typographical error in our account of the building designed by Mr. W. Weisman of Auckland.

Mr. Weisman, architect, of Auckland, has in hand for Messrs. Warnock Brothers of that city, tanners and soap manufacturers, a contract for a new building costing £3,000.



AUCKLAND TOWN HALL. Queen Street Frontage

AUCKLAND TOWN HALL. Grey Street Frontage.

The difference in level between Queen and Gray streets, makes an upper and a lower ground floor. The great hall is situated on the lower floor, level with Grey street, and adjacent to it is a large supper room under the small hall, which is on a level with Queen street. These halls are arranged so as to be *en suite* with the Mayor's rooms for the convenience of public receptions. They have ample escape doors direct into the street.

The public staircases and landings throughout will be fireproof. Every convenience has been provided in the way of dressing rooms and lavatories, both for performers and the public, and the retiring and cloak rooms will be most commodious, and there is a large smoke room.

In connection with the supper room is a large kitchen and serving room conveniently placed at one end and arranged so as to provide for the largest functions.

The great hall includes a ground floor, balcony and gallery, the whole capable of seating 3000 persons, exclusive of 350 in the chorus and orchestra. The organ space provides for an organ which will be the largest in New Zealand, the electric appar-

atus of which will be situated in the cellar underneath. The orchestra platform is made to slide under the choir front, thus giving more dancing space on the main floor when required, making a total area of 122 feet by 75.

The small hall comprises a ground floor and gallery, accommodating together 800 persons and 150 in the chorus gallery.

The galleries of the two halls are constructed on the most up-to-date principles, being carried by steel cantilevers, thus leaving the ends of the halls free from obstruction both for seeing and dancing.

The main entrance to both halls is in Queen street, a grand staircase 12 feet wide leading down to a large crush room off which are the cloak rooms before mentioned. Above the entrance vestibule is a large promenade and lounge on the level of the galleries.

The entrance to the municipal offices is near the angle in Queen street, the vestibule to the same leading to a wide staircase in the tower communicating with a large vestibule on each floor, and there is an electric elevator in the centre. Off these vestibules access is got to the Mayor's suite, Councillors' room, library, Town

chair lift being conveniently placed between the halls.

What is Pozzolana? The Roman concrete, such as was employed in building the Pantheon for example, owed much of its strength to the employment of a light volcanic earth known as "Pozzolana" which formed with lime a very strong hydraulic mortar to form floors, and large vaults. The answer to our question comes from the *Builder*.

A Beautiful White Desert City.

Heliopolis, the City of the Desert, as it is named, will be ready for occupancy next season. It is situated some 20 miles from Cairo, and to acquaint the foreigners now living at the last-named place, with its beauties, an electric tram service has been installed that carries sightseers to the site free of charge. The grounds and buildings are owned by a British syndicate. The great Casino is under roof, and what is intended to be the largest hotel in the world will probably be finished before Spring. There are beautiful gardens and grand boulevards, set with palms and flowers. Except for its vegetation, the city will be entirely white.