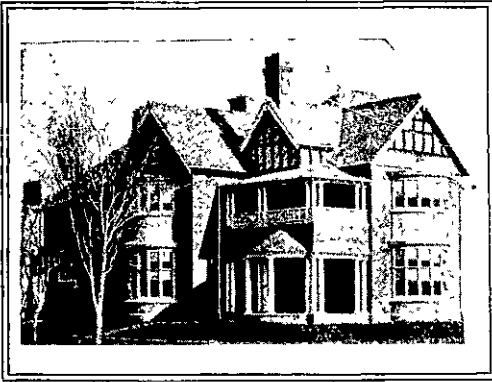




Architecture and Building



New Building for Messrs. Cooper, Limited, Seed Merchants.

The contract for the erection of the above structure has been signed by Messrs. Campbell & Burke. The building will have a frontage of 27ft. 8in. to Willis street by a depth of 90ft. 1in. to Mercer street, and the height to top of parapet will be 68 feet. Messrs. Cooper, Ltd., will occupy the shop with frontage to Willis street (34ft. depth by full width of building), the

cellar, and also two of the upper floors. Two shops with frontage to Mercer street will be to let, and also the first and second floors.

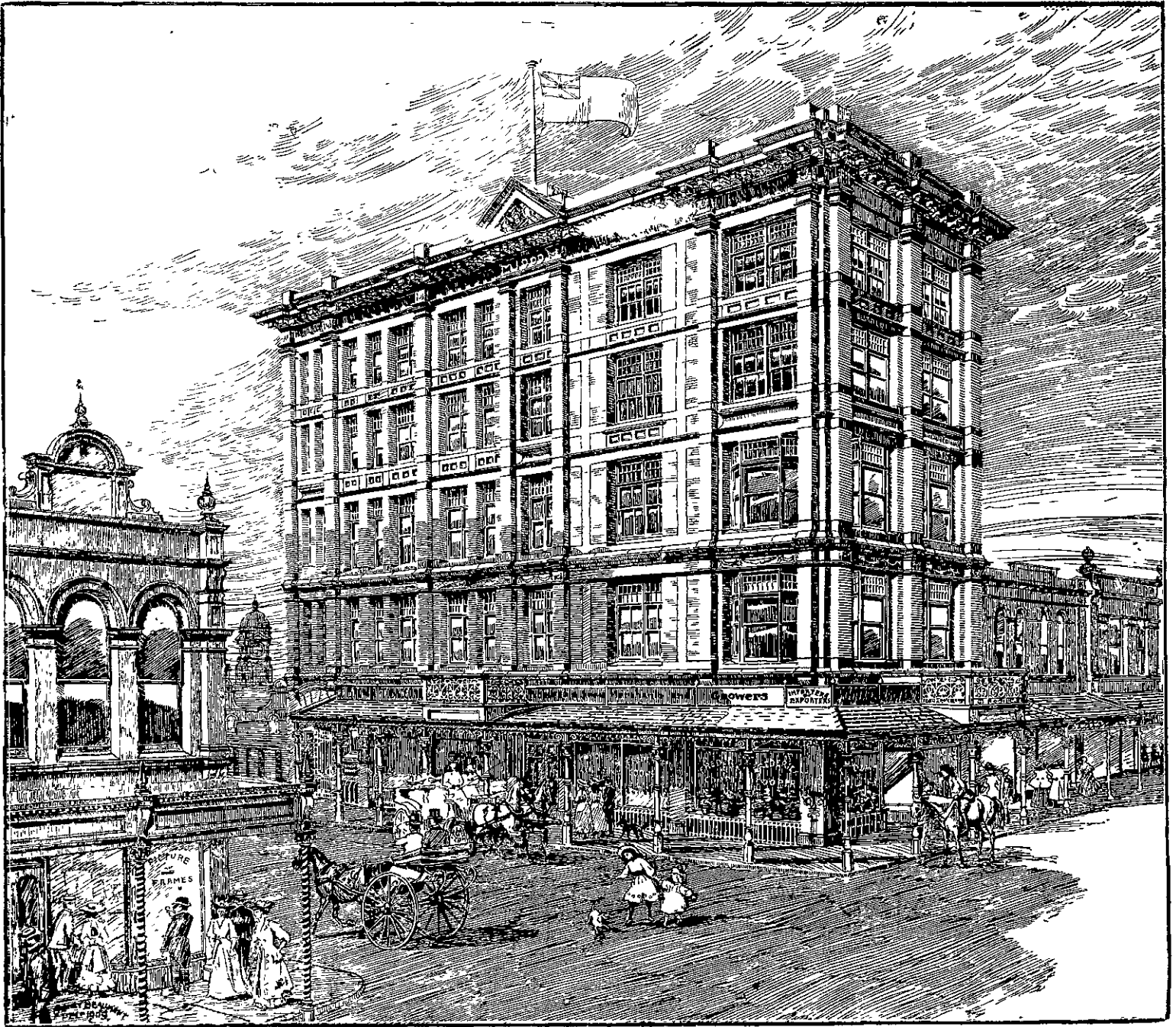
The entrance hall will be nine feet wide, with tiled floor, and from same the main stairs and the passenger elevator will give access to the upper floors. A goods lift will also be fitted.

The outside of the building will be finished with pressed facing bricks and compo dressings, and the roof will be flat and of concrete, finished with patent asphalt.

All the windows will be fitted with the "Austral" patent fittings, so that cords and weights will be avoided. A verandah of pleasing design will be erected on the two street frontages, and the roof will be covered with "Marseilles" tiles.

The contract was signed a few days back and the contractors, with their usual energy, have already started work.

The architect is Mr. John S. Swan, M.R.S.A.; the contract price is £8800, which was the amount of the architect's detailed estimate of cost.



WELLINGTON CITY IMPROVEMENTS. Building designed for Messrs. Cooper, Limited, corner of Willis and Mercer Streets. Architect, J. S. Swan. Contractors, Campbell & Burke.