

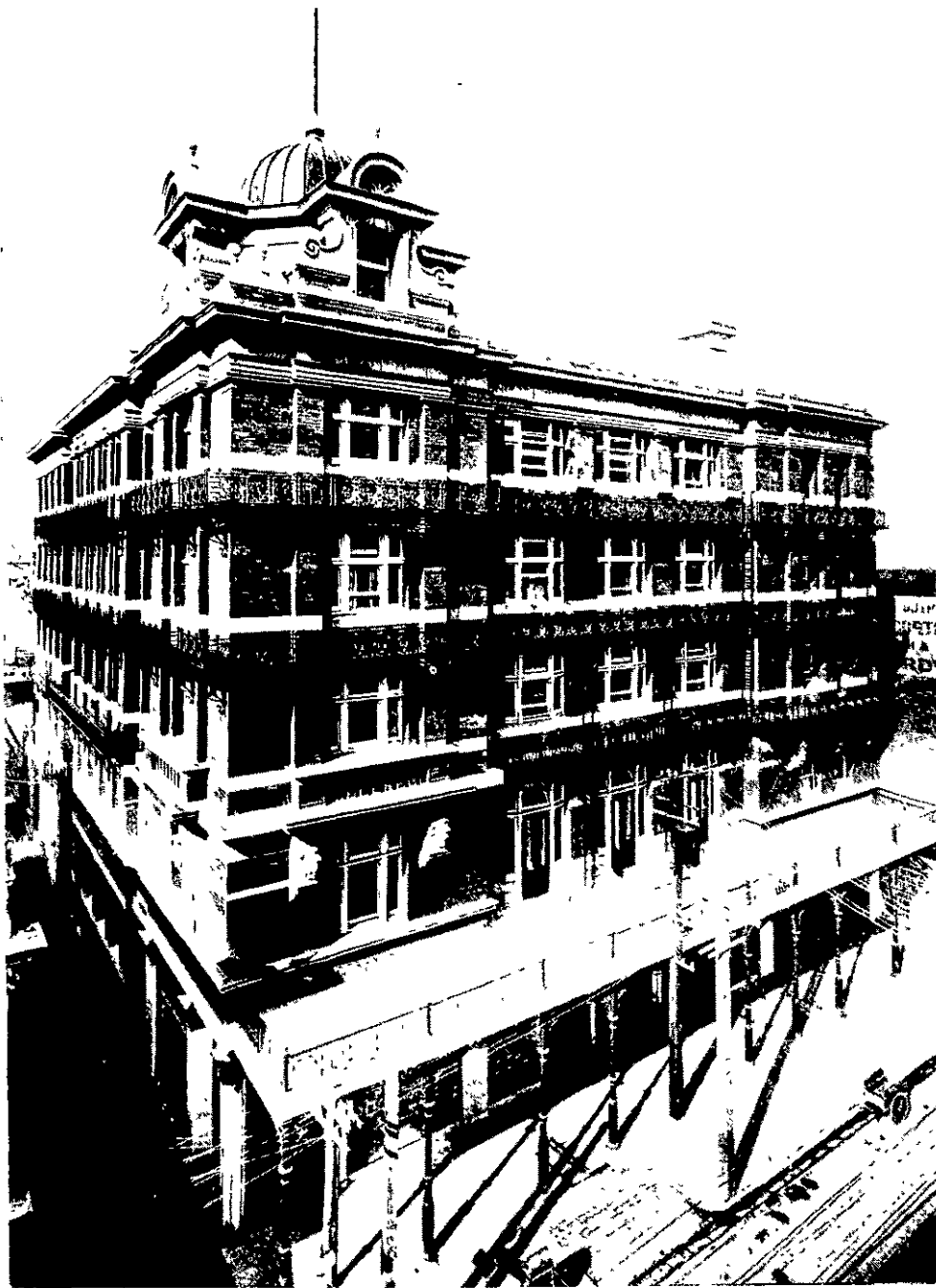
## Hotel Windsor, Wellington.

This handsome addition to Wellington's improving architecture, erected at a cost of £25,000, is now open to the public. The first floor is approached by a grand double staircase and lift, and is principally taken up with dining, luncheon, grill and servery rooms, drawing, reading and writing rooms, are provided on each floor, also bathrooms, lavatories, etc. There are eighty large, well-lighted and ventilated bedrooms, perhaps the largest rooms in the colony. The kitchen, laundry, stores and drying yard are situated on the top storey, and are approached by a separate stair

under T. I. Yourelle, Mr. Maddison's local representative. Clerk of works, Campbell Colquhoun; contractors, Trevor & Sons, plastering, Wm. Carroll; plumbing, Jenkins & Mack; electric lighting and fire alarms, Turnbull & Jones; lifts, Standard Elevator Co.; joinery, Stewart and Co., furnishings, D.I.C.; painting, Jackson & Co.; lead lights, Smith & Smith; patent Arkilite paving, J. C. Harrison.

\*\*\*\*\*

Satisfactory progress has been made in the erection of a block of shops, bakehouse, stables, etc., in Taranaki street, Wellington. Contract price, about £4,500. Architect, James Bennie; contractors, Howie & Mathewson.



HOTEL WINDSOR, WELLINGTON (J. C. Maddison, Architect).

and goods lift. The corridors are wide and amply lighted, while special attention has been given to the exits in case of fire, the galleries surrounding the building being designed both for use as fire exits, and as embellishments to an otherwise plain facade. The building is lighted by gas and electricity; the power for the latter is generated on the premises.

The building is faced with red brick, and all the interior partitions usually wood are constructed in concrete the Hudson Patent Walling Co.

The architect for the building was J. C. Maddison, and the work was carried out

Two residences are being completed at Northlands for Mr. Finlay MacLeod. Architect, James Bennie; contractor, W. Hutchings.

The contract for additions to the Thomson Bowling Pavilion has been let. Architect, James Bennie, contractor, W. Davies.

F. de J. Clere, F.R.I.B.A., the diocesan architect, has lately designed churches at Paekakariki, Reikorangi, Konini, and the Parish Hall at Taihape; and he has just let the contract for a brick church at Wadestown to Taft and Obee.

The same architect has "on the boards" designs for new parish churches at Palmerston North (in brick), Karori, Miramar, and Eastbourne. The new brick chancel and organ chamber for the Parish Church at Blenheim were also from his designs.

The Technical School at Petone, a conspicuous building in red brick, with a tiled roof, standing on a ridge near the Recreation Ground, was "passed" by Mr. Clere last week, and he hopes shortly to let the contract for the new Technical School at Palmerston North, as the plans and specifications are now complete. This building will also be in red brick, and is considerably larger than that at Petone. The site chosen for it is an excellent one at the corner of Duke and King streets.

Hoggard & Prouse, architects, have the contract for the erection of a steel frame warehouse in Ghuznee Street for Messrs. Cadbury Bros., Limited, of Bournville, England. The plans (which were approved of in England) provide for an up-to-date structure of four storeys, with a frontage of 34 feet by a depth of 86 feet. The construction is on the latest American type of skeleton steel frame; that is, the steel frame carries the entire weight of the walls and reinforced concrete floors, the brickwork being simply of sufficient thickness to make the walls weatherproof. It will be readily seen that this form of construction is of great advantage in Wellington, where the saving of wall space is a consideration, owing to the high price of land.

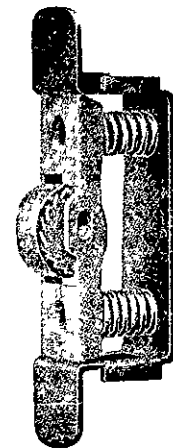
The successful tender was that of Sanders Bros., for at about £5,000. The building is to be completed in five months.

The tenders have been accepted for the erection of Taurangi Home, Ashburton, and the Jubilee Home, Woolston. Architects, Collins & Harman; contractors, Nightingale Bros.

The new warehouse for Mailing & Co., Ltd., on Oxford terrace, Christchurch, is nearing completion, and will wonderfully improve the looks of that part of the town. Architects, Collins & Harman.

A building is in course of erection for Messrs. Wilding & Ackland, at the corner of Hereford street and Oxford terrace, Christchurch, and will be used as offices. Architects, Collins and Harman; contractors, W. Grieg & Sons.

The contract for alterations, additions and painting at Mr. Lee's residence, Western Hutt, has been secured by George Sykes, contractor, Lower Hutt. Architect, C. Tilleard Natusch.



## The Automatic Sash Holder

A Simple, Sensible, Practical, Durable, Cheap and Modern Invention!

Dispenses with weights, cords, pulleys, etc., and their attendant deficiencies and annoyances.

Easy to Place, Works Automatically, Saves Timber, Labour, and MONEY!

Entirely prevents windows from rattling, is invisible, being inserted into the sash or stile. Adaptable to any window—old or new. Just the thing for windows that have no weight pockets.

The AUTOMATIC SASH HOLDER is a tried invention, having been in regular use in Great Britain, the United States, and the Far East for nearly four years.

Try this simple and economical device Send to-day for a sample set of Four Holders complete. They will be posted to any address on receipt of Postal Notes for 7/-.

**AUTOMATIC SASH HOLDER CO.**

Australasian Headquarters:

131 Cashel Street, CHRISTCHURCH