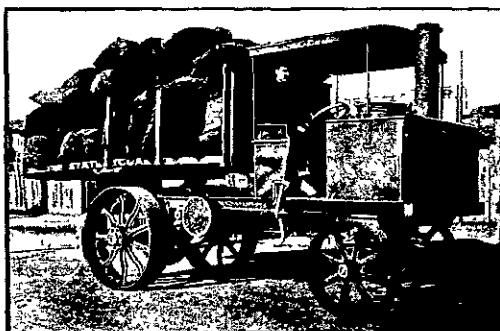


NORMAN HEATH & CO.

Harris Street - WELLINGTON

As Supplied to:

Auckland City Council
 (Repeat Order)
 Wellington City Council
 Westport Borough Council
 Wanganui Borough Council
 Hastings Borough Council
 State Coal Mines
 (2 Repeat Orders)
 Rangitikei County Council
 Horowhenua C'nty Council



And the following Contractors:

J. J. K. Powell, Allan Maguire,
 McEwen & Carter, J. Hogg and
 Co., A. W. Rapley, A. Amner, J.
 White, Oroua Carrying Company,
 Opunake Sawmilling Company,
 Wellington Meat Export Com-
 pany, Limited, Etc., Etc.

WRITE FOR COPIES OF
 TESTIMONIALS

STRAKER STEAM WAGON

We can Show an Immense Saving over Horse Traction. Straker-Squire Petrol Vehicles a Speciality

CANTERBURY AGENTS:

MERVYN W. STEVENSON & CO.

124 Manchester St., CHRISTCHURCH

Our 1908 Model is Thoroughly Up-to-
 Date, being Specially built for New
 Zealand Conditions

OTAGO AGENT:

KEITH RAMSAY

19 Vogel Street, DUNEDIN

PURCHASE A

"ZEALANDIA" OIL ENGINE

They are Locally Made, and by purchasing a
 "ZEALANDIA" YOU are helping a new
 Industry

They have proved themselves thoroughly re-
 liable and durable

They are the Simplest Engines on the market
 They take up little room in a boat

Spare Parts can be obtained without delay
 We give a better guarantee than any others

**THE FOLLOWING IS ONE OF MANY TESTIMONIALS
 RECEIVED BY THE MAKERS:**

[COPY]

MESSRS HOILAND & GILLETT,
 AUCKLAND

WHANGAREI,
 OCTOBER 21ST, 1907

DEAR SIRS, Just a line to let you know the Engine is a GEM (capital
 letters, please) I cannot well say more, nor would I say less. My
 passengers were delighted with the performance on Wednesday last on
 the trip up from the Bay in a nasty sea, and the "Nimrod" has re-
 gained her old reputation of the "smartest launch" on the river, thanks
 to the Zealandia Engine. Yours faithfully,

(Signed) W T COWPERTHWAIT

Sole Makers:

HOILAND & GILLETT

Mechanics' Bay, AUCKLAND

W. ANDREW & CO. ELECTRICIANS

IMPORTERS OF
 ELECTRICAL SUPPLIES
 MEDICAL BATTERIES
 DYNAMOS MOTORS
 ACCUMULATORS, ETC.

ESTIMATES FOR ELECTRIC LIGHT INSTALLATIONS

P.O. BOX 208, WANGANUI

And at QUEEN STREET, WAITARA

Portable Chemical

Cheapest and Best
 No Breaking of Bottle

No need for turning upside down
 Acts at once by turning key

Fire Extinguishers

For Factories, Workshops, Warehouses, Churches, Hotels, Shops, Places
 of Amusement, Household Use

Any capacity from 3 to 50 gal. Large Sizes set on wheels; very suitable
 for Borough Councils, Factories, Etc., especially those outside fire
 brigade radius

MANUFACTURED BY

JAMES MERCER, Coppersmith, Etc.

282 Tuam St., CHRISTCHURCH