



The ...
...Motor.

Among the recent purchasers of Argyll cars we notice the names of Lord Wenlock, Mr. Andrew Carnegie, and Major Ponsonby.

A long-standing complaint with New Zealand motorists has been the difficulty in obtaining spare valves when required. To obviate this the Motor Import Company, of Christchurch, are making a specialty of stocking a complete range of both inlet and exhaust valves for all the leading makes of cars—De Dion, Aster, Panhard, Darracq, Renault, Clement, Daimler, Humber, Minerva, Riley, etc.

All the valves are guaranteed to be made of the finest 5% nickel steel, and as the prices fixed are as low as is consistent with good quality, it should certainly pay motorists who have experienced trouble in this direction to communicate with the above firm.

According to the most recent statistics of the French Ministry of Finance, there are in France, a total of 32 000 cars, of which 4922 are owned in Paris. An exchange thinks that, allowing for cars "overlooked" and those owned by manufacturers, agents etc., the total figure would be close to 40,000.

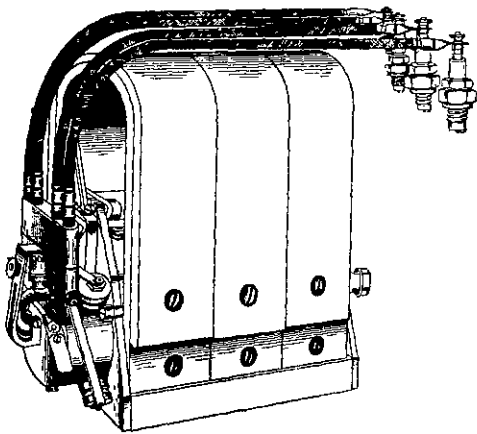
Mr. H. E. Avery, of Wellington, is having his two-seater De Dion car converted into a four-seater tonneau.

The greatest event in the motor-cycle world, viz., the Auto Cycle Club's Reliability Trials, have just concluded. The test is a particularly severe one as it lasts 6 days and covers 1000 miles of country, a portion being through picturesque, but hilly Wales. It looks rather humorous to see the light weight "Motosacoche" of 1½ h.p. competing against machines of 6 h.p. down, the nearest competitor being 3½ h.p. The "Motor Cycle" comments upon the performance of this wonderful little machine as follows:—"A motor bicycle which is creating enormous interest in the A.C.C. reliability trials is the Motosacoche. One could reasonably expect that this machine would finish every day inside maximum time with reasonable luck, but it has exceeded all expectations since it has proved itself to be not only reliable, but fast, as it has always arrived early and when seen on the road has always been travelling at a respectable speed. At the famous Fish Hill grade 1 in 9-11 the Motosacoche came up remarkably well, only giving a few easy strokes of the pedal on the steepest portion. The excellent running of the Motosacoche created a most favourable impression, proving to be fast on the level and with pedal assistance a remarkable hill climber."

MOTOR NOTES.

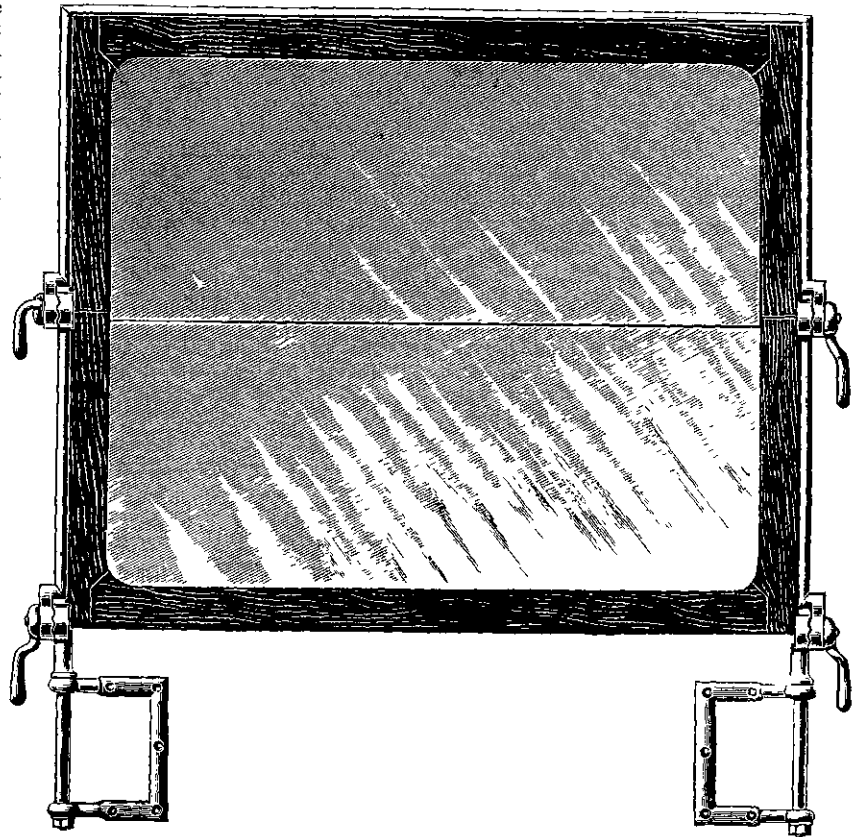
By "ACCUMULATOR."

Wind screens are a constant source of interest in a breezy climate such as ours, and though there are many on the market, they are by no means uniformly successful. One of the latest and best to be introduced here is the "H. and B." particulars of which reach us from the Motor Import Company. It is claimed to be adjustable to any position and a glance at the accompanying illustration showing

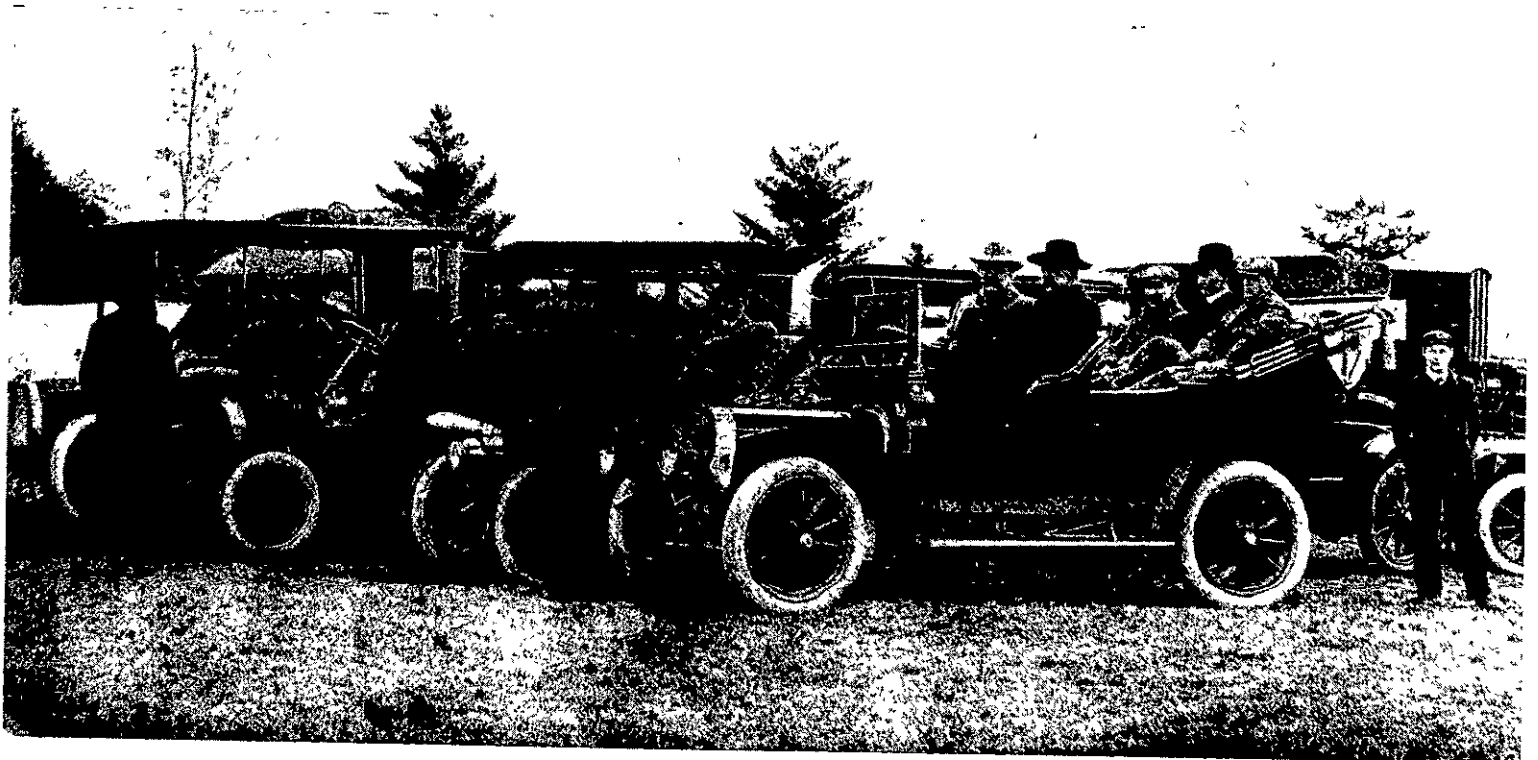


THE SIMMS-BOSCH HIGH-TENSION MAGNETO

a few of the adjustments possible is sufficient to demonstrate this contention. The screen is fitted with patent polished plate glass, and is warranted to be absolutely free from rattle when the car is running. In addition to supplying the screens to car owners, the agents are prepared to supply the trade either with the complete screens or necessary fittings to enable them to build for themselves.



A NEW WIND SCREEN



THE 16-20 H.P. ARGYLL (IN FOREGROUND) RECENTLY PURCHASED BY DR. THACKER, CHRISTCHURCH.