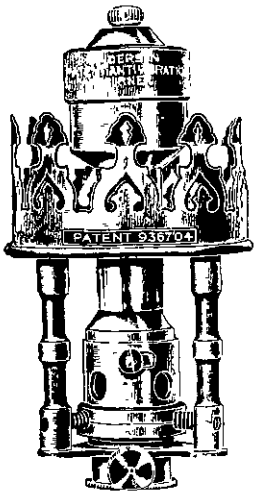


# THE "ANDERSON" ANTI-VIBRATION Incandescent Gas Burner.

Patented in all Countries.

**THE CHEAPEST AND MOST SCIENTIFICALLY DESIGNED ANTI-VIBRATION BURNER ON THE MARKET.**



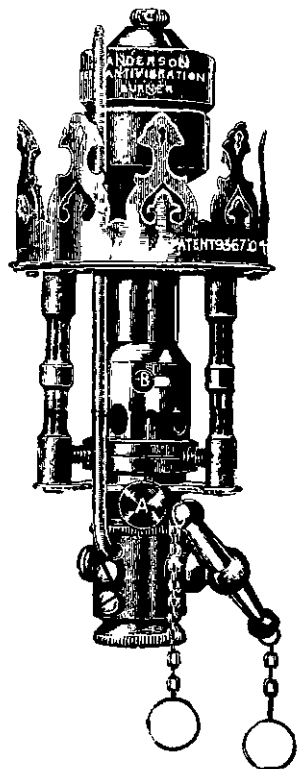
Ordinary Anti-Vibration Burner.

**PROLONGS THE LIFE OF MANTLES FROM 8 TO 15 TIMES THEIR PRESENT DURABILITY.**

**British Manufactured Goods.**

**ADVANTAGES.**

- DOES NOT OBSTRUCT THE DOWNWARD LIGHT.
- PATENT ANTI-VIBRATOR AND BURNER COMBINED
- BURNER EASILY AND INSTANTLY DETACHED FROM NIPPLE.
- DOES NOT LIGHT BACK.
- FREE FROM ROARING.
- MANTLE ROD SECURELY HELD FAST OR INSTANTLY RELEASED IF BROKEN.
- STEATITE RING FITTED TO EVERY BURNER HEAD.
- EVERY BURNER FITTED WITH A STANDARDISED BRASS NIPPLE.

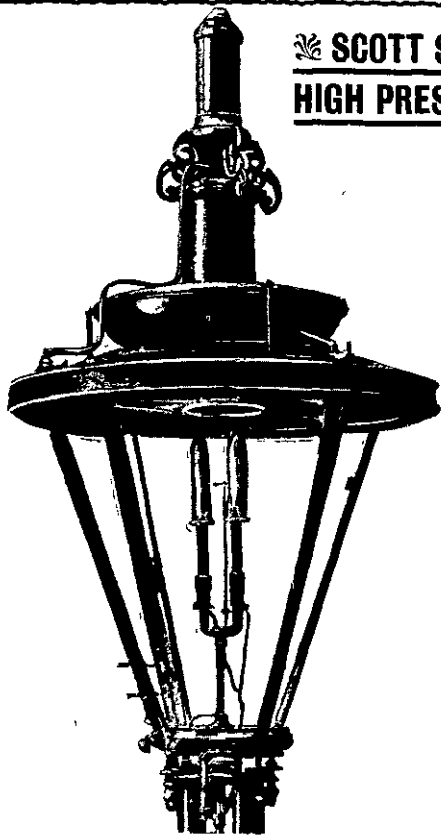


Complete Anti-Vibration Burner.

**For Street Lighting, Railway Stations, Factories, Workshops, Warehouses, Churches, Licensed Houses, Shops, and Household Use.**

**SCOTT SNELL HIGH PRESSURE**

## Gas Lamp.



TYPE OF DOUBLE BURNER LAMP.  
1,200 c.p.  
Consumes 28ft. per hour.

**THIS** Lamp has been scientifically tested in London, Paris, Berlin New York, Chicago, St. Louis, Boston, and various other British and Foreign towns. All tests show **Maximum Efficiency.**

It has been applied to Docks—over 200 installed in one Dock. It has been applied to streets too numerous to specify. A typical installation may be seen in Whitehall and Parliament Street Westminster, **saving over £100 a year** in cost, and **giving seven times the amount of light** of previous system.

It has been applied to various **Halls, Hotels, Shops, Railway Stations,** and various other establishments.

**COMPARED WITH COMPRESSING SYSTEMS**

**WE AVOID** Expense of Special Service. Increased Leakage Losses. Expenditure for Power. Cost of upkeep of Compressing Plant. Dependence of whole service on working of Power Actuated Pumps, and various minor drawbacks.

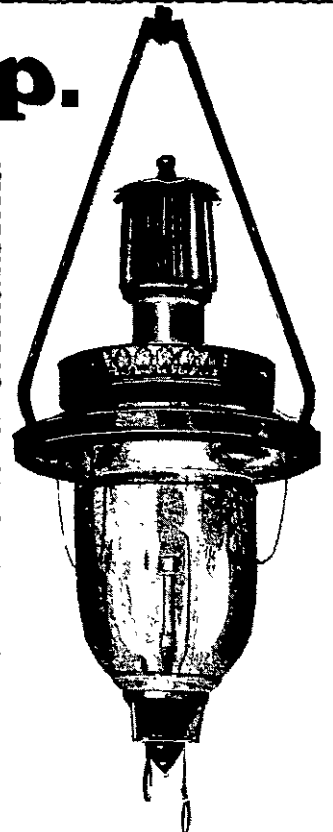
A street may be transformed in a single day by installing Scott Snell Lamps, **without disturbing street surface or traffic.**

**Free of Cost,** by means of **Waste Heat,** this Lamp provides itself with compressed air at nearly 2lb. per square inch pressure

**COMPOSITE BODY LAMPS.**

**Specification**—These Lamps are constructed with detachable reservoirs and cylinders, making any part replaceable in a few minutes. Adjustment is much simplified. Working parts operate on knife edges. Weight considerably reduced. Working parts may be removed and replaced by spare section, and an examination or re-adjustment made at leisure.

Guaranteed gas consumption, 15ft per hour.



TYPE OF SUSPENSION CIRCULAR LAMP. Over-all height, 54in. Width 16in. without globe.

SOLE LICENSEES AND MANUFACTURERS :

**D. ANDERSON & CO., Ltd.,**

**Lighting Engineers and Contractors,**

TELEGRAMS : "DACOLIGHT, LONDON."

**73 Farringdon Road, LONDON, E.C.**