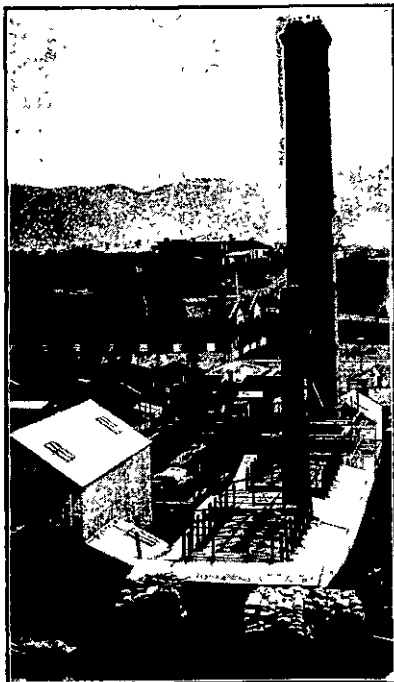


PETER HUTSON & CO.

LIMITED.



(Dry Press Brick Works, Newtown. Stack 140ft high.)

PIPE AND POTTERY WORKS :
WALLACE STREET.

DRY PRESS BRICK WORKS :
MANSFIELD STREET.
WELLINGTON.

EVERY DESCRIPTION OF
EARTHENWARE
MANUFACTURED.

FIRE-BLOCKS AND FIRE-
BRICKS A SPECIALITY,
GUARANTEED TO STAND
ANY HEAT REQUIRED.

Cement and Lime Merchants.

Registered Office
and Showroom :

3 HUNTER ST., CITY.

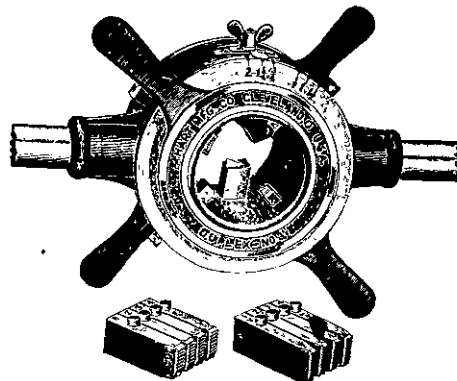
F. STAPLES,

102 LAMBTON QUAY, WELLINGTON.

Telephone 943. (Next Aldous.)

Plumber, Gasfitter
Locksmith, Electrician
and
General Repairer.

ENGINEERS' TOOLS.



Our Tool Department
embraces a very full
assortment of.....

STARRETT'S
(and other Makers)
**Latest
Productions.**

Many of these lines
can be sent quite well
by post, and we invite

correspondence from **all parts of the colony.** Here is a List
suggestive of our Stocks. **It is not a Full List:**

- | | |
|---------------------|-----------------------------|
| STOCKS AND DIES | INSIDE AND OUTSIDE CALIPERS |
| SCREW PLATES | SPRING DIVIDERS |
| CHUCKS | CALIPER GAUGES |
| TOOL HOLDERS | DEPTH GAUGES |
| SPEED INDICATORS | SURFACE GAUGES |
| TRY SQUARES | SCRATCH GAUGES |
| DOUBLE SQUARES | FEELEER GAUGES |
| CALIPER SQUARES | THREAD GAUGES |
| COMBINATION SQUARES | WIRE GAUGES |
| LEVELS | MORSE AND CLEVELAND DRILLS |
| BEVELS | CUTTING AND OTHER PLIERS |
| PLUMB BOBS | &c. |
| &c. | |

EDWARD REECE & SONS,

Colombo Street * * * CHRISTCHURCH.

ARTHUR D. RILEY | 145 LAMBTON QUAY, | FRANCIS HOLMES
WELLINGTON.

RILEY & HOLMES,

IMPORTERS OF UP-TO-DATE BUILDERS'
AND ENGINEERS' REQUIREMENTS.....

ELASTIC PULP PLASTER.

PATENT FIREPROOF METAL LATH.

WELL FIRES (BOWES' PATENT)

The most economical fire
existing.

ARTISTIC METAL WORK in Elec-
tric Light, Gas Fittings and
Furnishings.

SIR W. G. ARMSTRONG, WHIT-
WORTH & Co.'s High-speed
Tool Steel, Twist Drills, &c.,
Machine Tools, Cranes, &c.

LANCASHIRE STEAM MOTOR
WAGON. First against all
corners.

SMOOTH-ON IRON CEMENTS. For
stopping holes in castings,
and leaks in engines & boilers.

F. S. GREENSHIELDS & CO.

Engineers and Importers,

Office—27, LAMBTON QUAY WELLINGTON.

CONTRACTORS FOR THE SUPPLY AND ERECTION OF
ALL CLASSES OF MACHINERY AND PLANT.....

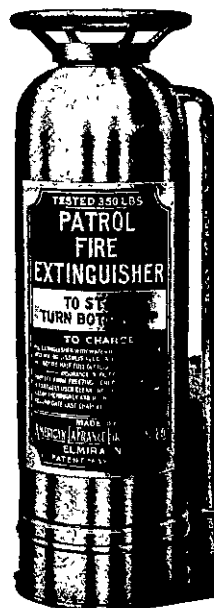
NEW ZEALAND AGENTS FOR

Electric Construction Co., Ltd., Wolverhampton.

"Gardner" Gas Engines—Stationary and Portable Oil
Engines, Launch Engines, adapted for either Kerosene or
Benzine Fuel.

Erith's Engineering Co., Ltd.—Patent Automatic Under-
feed Stokers.

Fire!! Fire!!



COPE with **FIRE** in its incipient stage. Steam
engines take time to get there, or the water
might be cut off at the critical moment.

Had a **PATROL Fire Extinguisher** been used when
the recent Wellington blaze commenced its disas-
trous course, **Thousands of Pounds** would have
been saved.

**The PATROL
WILL EXTINGUISH BLAZING OIL !**

Forty times as effective as water.
Throws stream **FIFTY FEET.**
A child can use it.

WRITE US.

James Gilbert & Co.,
3 HUNTER STREET,
WELLINGTON.

**WILSON'S
HYDRAULIC LIME**
TRADE MARK.
AUCKLAND.

ESTABLISHED 1878.

FINELY GROUND. **★ BRAND.**
NO WASTE.

THE BEST BUILDING LIME.....
SETS IN WET OR DRY POSITIONS.

MANUFACTURED BY
JOHN WILSON & CO., LTD.,
AUCKLAND.

Agents in
every Centre.