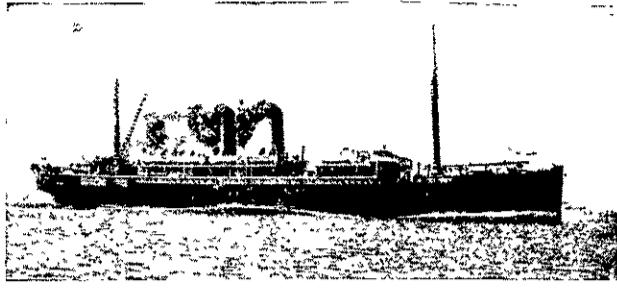


UNION STEAM SHIP COMPANY OF NEW ZEALAND, LTD.



"I am absolutely prepared to say that there is no service in the world that can, in any measure, compare with the New Zealand coastal or intercolonial service."—MR. FRANK T. BULLEN.

MAGNIFICENT FLEET OF 55 STEAMERS.

ENGAGED IN

INTERCOLONIAL SERVICES between—

New Zealand and Tasmania

" " Victoria

" " New South Wales

SOUTH SEA ISLANDS SERVICES (every 28 days) between—

New Zealand and Suva and Levuka (Fiji)

" " Friendly Islands Samoa, Fiji and Sydney

" " Rarotonga (Cook Islands) and Papeete
(Society Islands)

Sydney to and from Fiji, Samoa, Friendly Islands and Auckland

COASTAL SERVICES—

Almost Daily between the principal New Zealand ports; also regular and frequent services between ports on Tasmanian Coast.

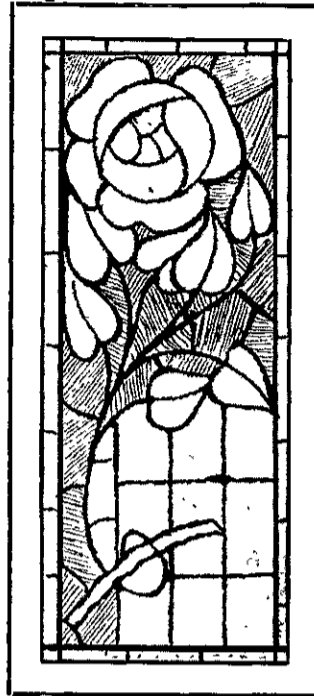
SPECIAL SUMMER CRUISES

in January each Year

To the World-Famed **WEST COAST SOUNDS** of New Zealand, acknowledged by travellers to surpass even the Fjords of Norway in their beautiful grandeur.

R. Martin,

Manufacturer of Stained Glass
and Leaded Lights. * * *



Highest Exhibition
Awards
Auckland & Wellington
Exhibitions.

DESIGNS SUBMITTED.
WRITE FOR INFORMATION.

R. MARTIN,

17 Manners Street,

Telephone 144.

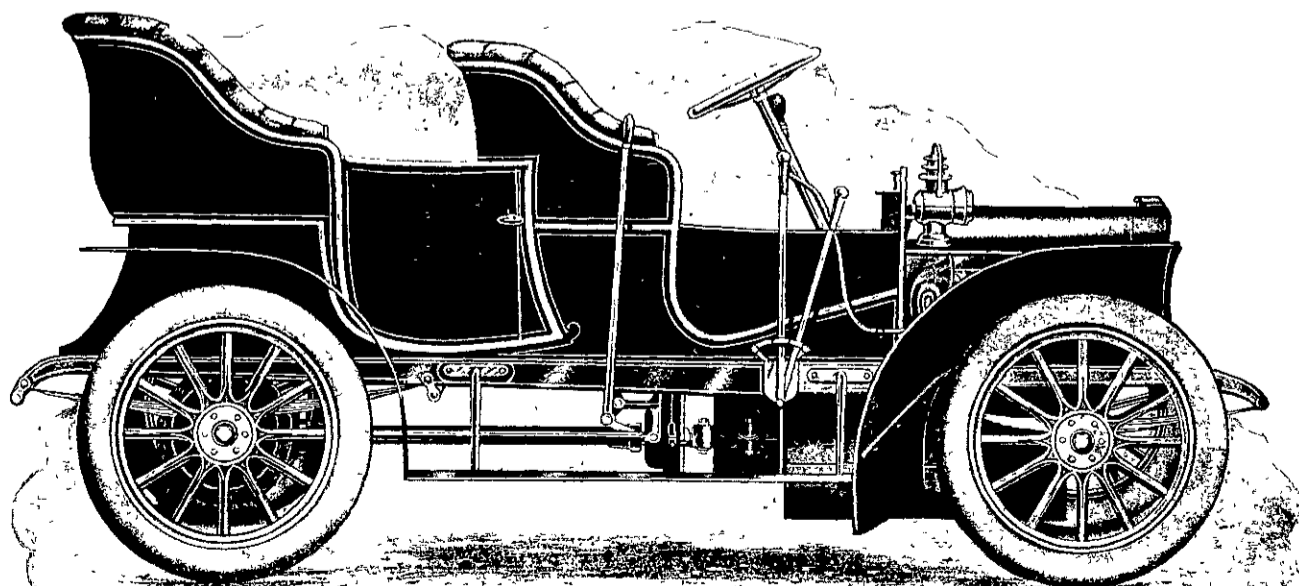
WELLINGTON.

ARGYLL

THE CAR for Reliability.

BRITISH THROUGHOUT.

Winner of Glasgow to London Reliability. Full Marks Obtained.



N.Z. Agents :

**SCOTT
MOTOR**

and...

CYCLE

Co., Ltd.

Wellington and
Palmerston N.