

F. S. GREENSHIELDS & CO.
Engineers and Importers,
 Office—27, LAMBTON QUAY WELLINGTON.
 CONTRACTORS FOR THE SUPPLY AND ERECTION OF
 ALL CLASSES OF MACHINERY AND PLANT
 NEW ZEALAND AGENTS FOR
Electric Construction Co., Ltd., Wolverhampton.
"Gardner" Gas Engines—Stationary and Portable Oil
 Engines, Launch Engines, adapted for either Kerosene or
 Benzine Fuel.
Erith's Engineering Co., Ltd. Patent Automatic Under-
 feed Stokers.

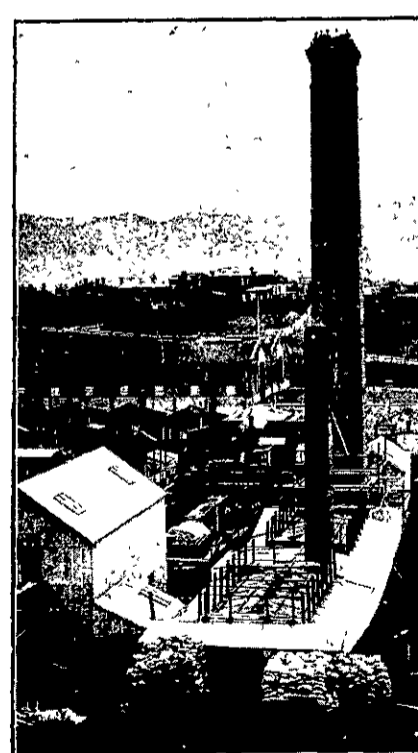
TELEPHONE 76. P.O. Box 657.
R. P. M. MANNING,
 (LATE OF COLONIAL SUGAR REFINING
 COMPANY, LIMITED, SYDNEY.)
Consulting Engineer and Contractor.
 PLANS prepared and estimates furnished for plant of every descrip-
 tion, including Mining, Agricultural, Electrical, Hydraulic,
 Pneumatic, Refrigerating, and Milling Machinery; Steam and Oil
 Engines, Steam Turbines, Gas Engines and Producer Plants, Storage
 Batteries, Electrical and General Engineering Accessories.
 If you contemplate purchasing or installing machinery or plant of
 any kind, do not hesitate to write me. Even should business not
 eventuate, I am ready to go carefully into the matter with you. No
 obligation, absolutely.
R. P. M. MANNING, 151 Cashel Street, CHRISTCHURCH.

Portable Chemical CHEAPEST AND BEST.
Fire Extinguishers. NO BREAKING OF BOTTLE.
 NO NEED FOR TURNING UPSIDE DOWN.
 ACTS AT ONCE BY TURNING KEY.
 For Factories, Workshops, Warehouses, Churches, Hotels, Shops, Places
 of Amusement, Household Use.
 Any capacity from 3 to 50 gal. Large Sizes set on wheels; very suitable for
 Borough Councils, Factories, etc., especially those outside fire brigade
 radius.
 MANUFACTURED BY **JAMES MERCER,**
 Coppersmith, etc.
 282 TUAM STREET - - - - CHRISTCHURCH.

The Septic Tank Co., Ltd.
 (Cameron, Commin & Martin Patent) WESTMINSTER, LONDON.
 Plans prepared for towns,
 hospitals, schools, private
 residences, etc.
 Self-contained Septic Tanks
 stocked in Wellington.
 New Zealand Repre-
 sentatives:
NORMAN HEATH & CO.
 Hunter Street, WELLINGTON.
 Canterbury Agents:
HILSON & CATTO,
 114 Manchester St., Christchurch.
 Otago Agents:
KEITH RAMSAY,
 19 Vogel Street, Dunedin.



PETER HUTSON & CO.
LIMITED.



(Dry Press Brick Works, Newtown. Stack 140ft. high.)

PIPE AND POTTERY WORKS:
WALLACE STREET.
 DRY PRESS BRICK WORKS:
MANSFIELD STREET.
WELLINGTON.
 EVERY DESCRIPTION OF
 EARTHENWARE
 MANUFACTURED.
 FIRE-BLOCKS AND FIRE-
 BRICKS A SPECIALITY,
 GUARANTEED TO STAND
 ANY HEAT REQUIRED.
 Cement and Lime Merchants.
 Registered Office
 and Showroom:
3 HUNTER ST., CITY.

F. STAPLES, Plumber, Gasfitter
 Locksmith, Electrician
 102 LAMBTON QUAY, WELLINGTON. and
 Telephone 943. (Next Aldous.) General Repairer.

"ACME"
Gas & Oil Engines.
 Special Reductions for a Month.
 Large Stocks on Hand.
 Engines Fitted up Free of Charge.
 SOLE AGENTS FOR N.Z.:
J. W. Wallace & Co.
 54 VICTORIA STREET, WELLINGTON.
 CHRISTCHURCH DEPOT:
R. W. HORN & CO. . . . 65 ST. ASAPH STREET.

DICKINSON,
 CIGARETTE MANUFACTURER,
 CIGAR IMPORTER & TOBACCONIST.

Manufacturer of
 Vice-Regal Cigarettes
 Price's Mixture.

Grand Hotel Buildings,
 2, High Street,
 DUNEDIN.