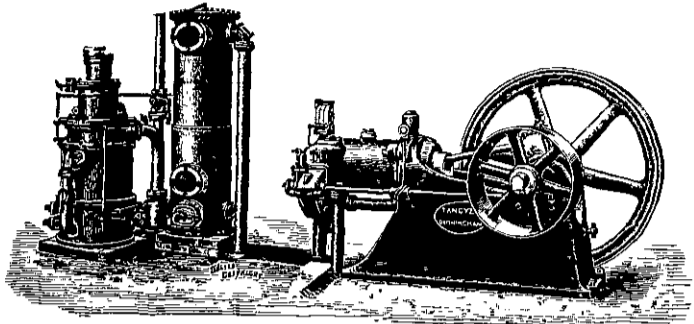


THE "TANGYE"

For use with Anthracite or Gas Coke. **Gas Engine and Suction Gas Producer**



ON ORDER FOR, OR SUPPLIED INTO, THIS COLONY:

CES SIZE .. FOR	4½	MAXIMUM B.H.P.
FS SIZE .. FOR	9	" "
JS SIZE .. FOR	29	" " (two on order)
KS SIZE .. FOR	39	" "
OS SIZE .. FOR	88	" "
PS SIZE .. FOR	115	" "

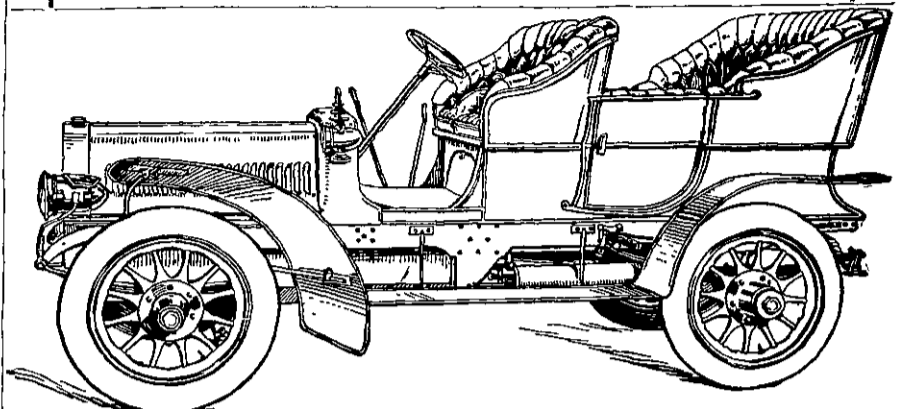
Catalogues, Quotations and Copies of Testimonials on Application.

Working with Gas Coke it is a SAFE STATEMENT that 50 BRAKE HORSE POWER can be produced at a cost of 10d. PER HOUR.

SOLE REPRESENTATIVES:

JOHN CHAMBERS & SON, Ltd.
AUCKLAND, WELLINGTON, DUNEDIN, CHRISTCHURCH, WANGANUI.

THE CADILLAC



THE CAR THAT CLIMBS.

SOLE AGENT FOR WELLINGTON AND WAIRARAPA DISTRICTS, FROM WHOM CATALOGUES AND ALL PARTICULARS CAN BE OBTAINED:

FRANK C. MATTHEWS.

MATTHEWS' MOTOR GARAGE,
12 TARANAKI STREET EXTENSION, WELLINGTON.

THE ELLIOTT-FISHER

BILLING MACHINE & BOOK TYPEWRITER

IS a Machine that, performing all the work of any other Typewriter, begins where the others leave off, and—

WRITES IN BOUND BOOKS, ON PAPER OF ANY WIDTH, ON CARDS AND ENVELOPES OF ANY SIZE & THICKNESS, ON ROLLS OF PAPER FIVE AT A TIME.

Has twice the Manifolding capacity of any other Machine, or at least saves a second edition.

The only Machine writing on large ruled tabulated sheets in perfect register and on ruled lines.

Cuts Office Work in half, writing Order, Despatch Note, Invoice, and Day Book at one operation.



Writes on Maps.
Writes on Large Plans.

WRITE FOR INFORMATION TO

SYSTEM DEPARTMENT,
YEREX, BARKER & FINLAY, LTD.

(Opposite Town Hall) WELLINGTON.

Sole Agents for Elliott-Fisher Company.

BEST LINES

STORRIE'S PATENT RIDGERS.
STORRIE'S PATENT ROTARY TURNIP THINNER.

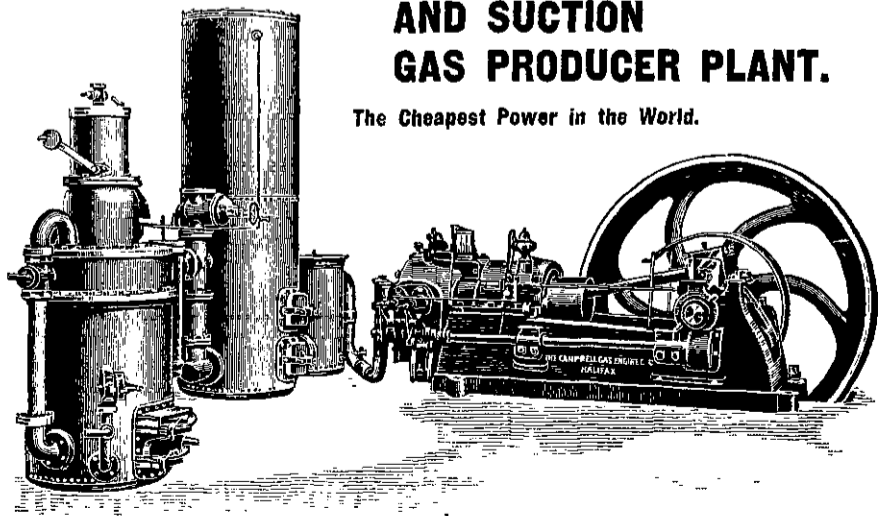
We Handle and Manufacture—
DRILL SCUFFLERS, HORSE HOES, CULTIVATORS, &c.

SOLE AGENTS—
"PENNSYLVANIA" GRAIN DRILLS. "SAMSON" WINDMILLS.
"CUNDALL" OIL ENGINE.
"PERFECT" CREAM SEPARATOR AND DAIRY UTENSILS.

WRITE US. COMPLETE LINE OF IMPLEMENTS.
Alex. Storrie, FARM IMPLEMENT WORKS,
INVERCARGILL.

The "CAMPBELL" Gas Engine AND SUCTION GAS PRODUCER PLANT.

The Cheapest Power in the World.



A 25-b.h.p. at Wanganui works on 1½lbs of coke per horse-power per hour.
A 40-b.h.p., installed for Messrs. Lind & O'Connor, Flaxmillers, Shannon, is now at work. All interested are invited to inspect.

CATALOGUES AND FULL PARTICULARS FROM
N. ANDREW, Wanganui, & TOPLISS BROS., Christchurch.