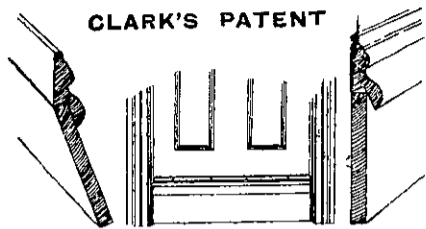


CLARK'S PATENT

RAIN DRAFT AND DUST EXCLUDER FOR DOORS.



CLARK'S PATENT
 THIS Invention is a Perfect Preventive of Rain, Wind, or Dust from entering the building under the door, and applied to inner doors stops all draughts from entering the room. The appliance is simple in construction, acts with certainty and cannot get out of working order when properly fixed. The opening of

the door raises the flap, the closing depresses it and seals the opening of the door at the bottom. Have one fixed and the resulting comfort and safety will astonish you. **Price Small. Advantages many. Try one!**

Clark's Woodware Manufacturing Coy.,

Factory: 16 Waterloo Avenue,
 Wellington South.

AGENTS WANTED.

NEW INTERNATIONAL ZEALAND EXHIBITION, 1906-1907.



BALDWIN AND RAYWARD'S "PROGRESS" PRIZES, VALUE £20.

For CLASS 17—

"Complete Models of Engines or Machines, either Working or Stationary."

Messrs. Baldwin & Rayward have placed the sum of £20 at the disposal of the Committee for the Encouragement of Competition in the above Class. The amount will be awarded as follows:

FIRST PRIZE	£10	THIRD PRIZE	£3
SECOND PRIZE	£5	FOURTH PRIZE	£2

REGISTRATION FEE, 1/-

Originality of Construction and Design will receive Special Consideration.

The Committee will be prepared to favourably consider applications for extension of time in sending in exhibits for this class

G. S. MUNRO & R. ALLAN, Commissioners.

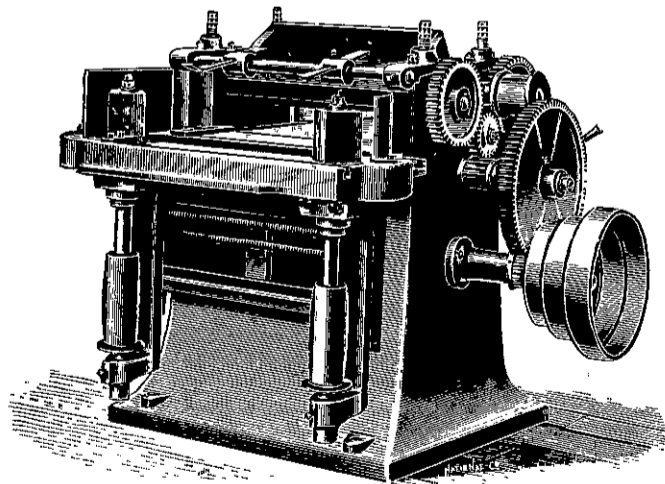
E. W. MILLS & CO.

LIMITED,

MACHINERY MERCHANTS, WELLINGTON.

LARGE STOCKS CARRIED AND INDENTS EXECUTED.

GRICE'S GAS ENGINES, PETTER OIL ENGINES, ATLAS STEAM ENGINES, ROBEY'S PORTABLE ENGINES, SUCTION GAS PRODUCERS, PLANING AND MOULDING MACHINES.



WOOD-WORKING MACHINERY OF EVERY DESCRIPTION

BAND SAW MACHINES, SASH PULLEY MORTISERS, LATHES ALL KINDS, COACHBUILDERS' WOOD-WORKING MACHINERY.

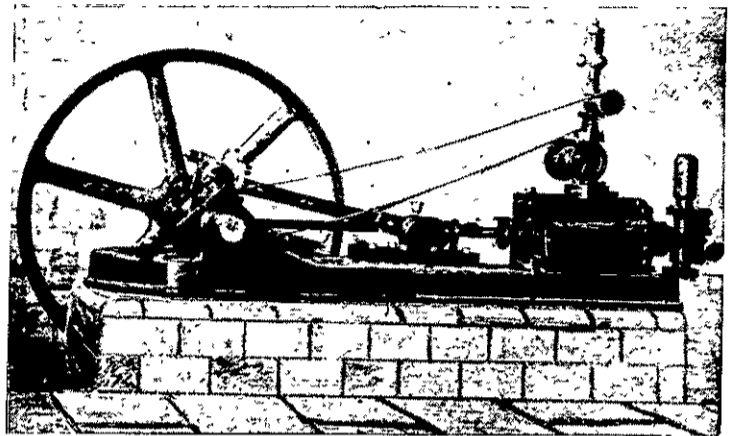
Wood-working Machinery by Haigh & Co., Kurchner & Co., American Wood-working Machinery Co.

WOOD & STEEL SPLIT PULLEYS, BEARINGS, SHAFTINGS, BELTING, T. & W. SMITH'S CELEBRATED FLEXIBLE STEEL WIRE ROPES, special for Log Hauling, Winch, Crane and Ship Work. **Inspection Invited.**

E. W. MILLS & CO., Ltd., WELLINGTON.

S. LUKE & CO., LTD.

Engineers, Iron & Brass Founders, and Boilermakers.



Manufacturers of all kinds of Hydraulic Machinery, Mining Machinery, Flax Machinery, Dredge Machinery, Marine Engines and Boilers.

TE ARO FOUNDRY,
 Wellington.

TELEPHONES—

Engineering Works, No. 89. Offices and Stove Department, No. 358.

BEST LINES

STORRIE'S PATENT RIDGERS.
 STORRIE'S PATENT ROTARY TURNIP THINNER.

We Handle and Manufacture—
 DRILL SCUFFLERS, HORSE HOES, CULTIVATORS, &c.

SOLE AGENTS—

"PENNSYLVANIA" GRAIN DRILLS. "SAMSON" WINDMILLS.
 "CUNDALL" OIL ENGINE.
 "PERFECT" CREAM SEPARATOR AND DAIRY UTENSILS.

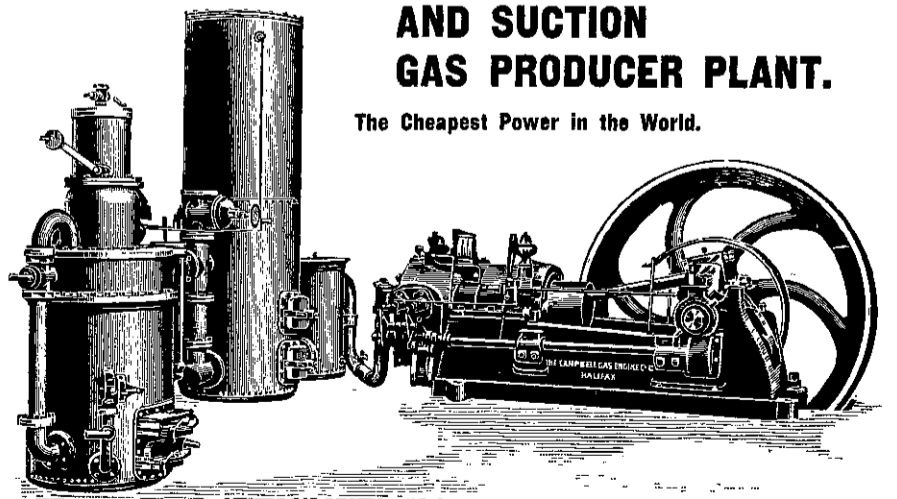
WRITE US.

COMPLETE LINE OF IMPLEMENTS.

Alex. Storrie, FARM IMPLEMENT WORKS,
 INVERCARGILL.

The "CAMPBELL" Gas Engine AND SUCTION GAS PRODUCER PLANT.

The Cheapest Power in the World.



A 25-b.h.p. at Wanganui works on 1 1/4 lbs of coke per horse-power per hour.
 A 40-b.h.p., installed for Messrs. Lind & O'Connor, Flaxmillers, Shannon, is now at work. All interested are invited to inspect.

CATALOGUES AND FULL PARTICULARS FROM
N. ANDREW, Wanganui, & TOPLISS BROS., Christchurch.