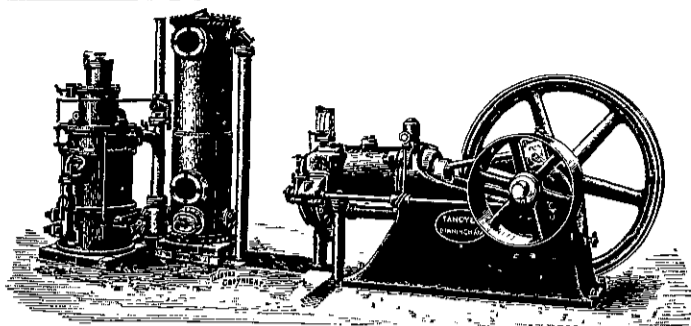


# THE "TANGYE"

For use with  
Anthracite  
or Gas Coke.

## Gas Engine and Suction Gas Producer



ON ORDER FOR, OR SUPPLIED INTO, THIS COLONY:

CES SIZE .. FOR	4½	MAXIMUM B.H.P.	
FS SIZE .. FOR	9	"	"
JS SIZE .. FOR	29	"	" (two on order)
KS SIZE .. FOR	39	"	"
OS SIZE .. FOR	88	"	"
PS SIZE .. FOR	115	"	"

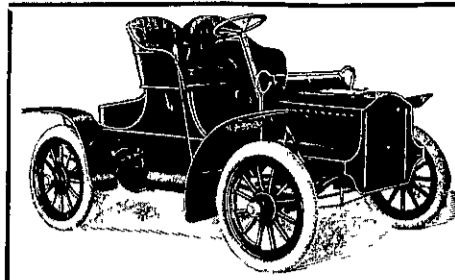
Catalogues, Quotations and Copies of Testimonials on Application.

Working with Gas Coke it is a SAFE STATEMENT that 50 BRAKE HORSE POWER can be produced at a cost of 10d. PER HOUR.

SOLE REPRESENTATIVES:

**JOHN CHAMBERS & SON, Ltd.**  
AUCKLAND, WELLINGTON, DUNEDIN, CHRISTCHURCH, WANGANUI.

# The "CADILLAC"



The  
Car  
that  
Climbs.

Sole Agent for Wellington and Wairarapa Districts, from whom Catalogues and all Particulars can be obtained: **Frank C. Matthews.**

**MATTHEWS' MOTOR GARAGE,**  
12 TARANAKI STREET EXTENSION . . . . WELLINGTON.

# "La Motosacoche"

"Bring your cycle and have a motor attached."

See article in March Motor Section on the wonderful **MOTOSACOCHÉ**, which has entirely revolutionised the method of propelling cycles.

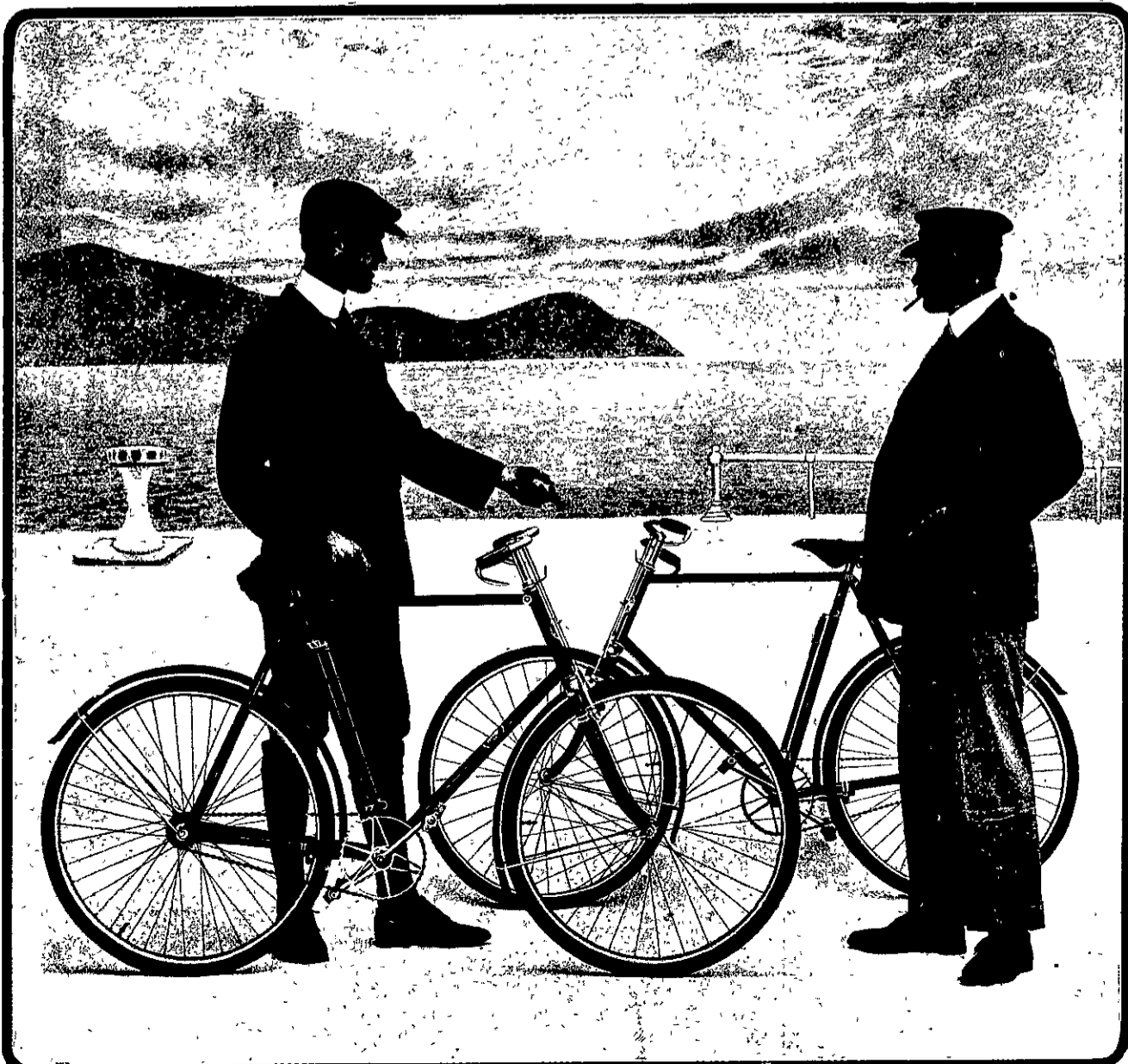
Retail Price of Motosacoche attachment, **£30.**  
ready for fitting:

To be had of Cycle and Motor Agents throughout the Colony.

Sole Wholesale Distributors for New Zealand:

**HERBERT H. SMITH,**  
FARISH STREET, WELLINGTON.

# No. 1 AERO RUDGE - WHITWORTH



## The No. 1 AERO RUDGE-WHITWORTH

IS THE

**Most Perfect  
Bicycle yet  
Constructed.**

Price, **£20 Cash.**  
EASY TERMS ARRANGED.

**E. REYNOLDS**  
AND CO., LTD.,

WELLINGTON,  
CHRISTCHURCH,  
INVERCARGILL.

DEPOTS:

- AUCKLAND, NEW PLYMOUTH,
- WANGANUI, PALMERSTON NTH.,
- NAPIER, MASTERTON, —
- WELLINGTON, BLLENHEIM, —
- — TIMARU. —

Please Address  
Department X.