

Auckland Catholic Depot

F. M. P. CULLEN : Proprietor.
8 DARBY STREET, AUCKLAND

(Next Thistle Hotel, Queen St.)

The Largest and most Up-to-Date Assortment of Church and Catholic Home Requisites in New Zealand.

Rosary Beads, from 6d. Prayer Books, from 2/-. Children's Prayer Books, from 6d. Statues, Crucifixes, Pictures, etc. The Latest in Catholic Literature.

Inspection cordially invited.
Phone 2556.

Superior Cycle Tyres by Mail

"John Bull" tyres, made of Pure Mottled Rubber, as used in the early days of Pneumatics, which tyres will be remembered by the older cyclists on account of their wonderful wearing qualities. Fifteen months' guarantee. Postage paid—18/6 each. Following sizes: 28 x 1 1/2, 28 x 1 3/4, 28 x 1 3/8; also beaded edge at 20/- each. "Land's End" Tyre; 9 months' guarantee—12/6. "John Bull" red rubber tubes, 6/6; 15 months' guarantee; also good tubes for 4/6; 12 months' guarantee.

Postage paid to any address in New Zealand.

JOCK CAIRNS, Cycle Agent, Masterton

Agencies:

Bell
Swift
Falcon Bicycles

Telephone 146

R. A. RODGERS

Motor and Cycle Importer
STAFFORD STREET, TIMARU
THAMES STREET, OAMARU

Agencies:

Harley-Davidson
Humber
A.J.S. and Rudge
Motor Cycles

CITY HOTEL

Dunedin

The most popular and most centrally situated Hotel in the city.

The Best Wines, Ales, and Spirits procurable always stocked. The Table second to none in New Zealand. The travelling public specially catered for.

Guests' Telephone, 2176. Office Telephone, 643.

LOUIS F. McCORMACK :: Proprietor.

CITY HOTEL DUNEDIN.

Fountain Pen Specialists

We not only stock all the well-known brands, but we have an expert that can repair any make.

Repairs promptly attended to.

The Swan Safety (self-filler)...	25/-
Onoto N Model	21/-
Onoto Streamline	25/-
Waterman (self-filler)	25/-
Grapho (self-filler)	12/6

All Posted Free.

Gold and Silver Mounted Pens and Eversharp Pencils from 9/6 to £5 5s.

R. J. Stark & Co., Ltd.

THE BLOCK, PRINCES STREET, DUNEDIN



BUTTERFIELD'S

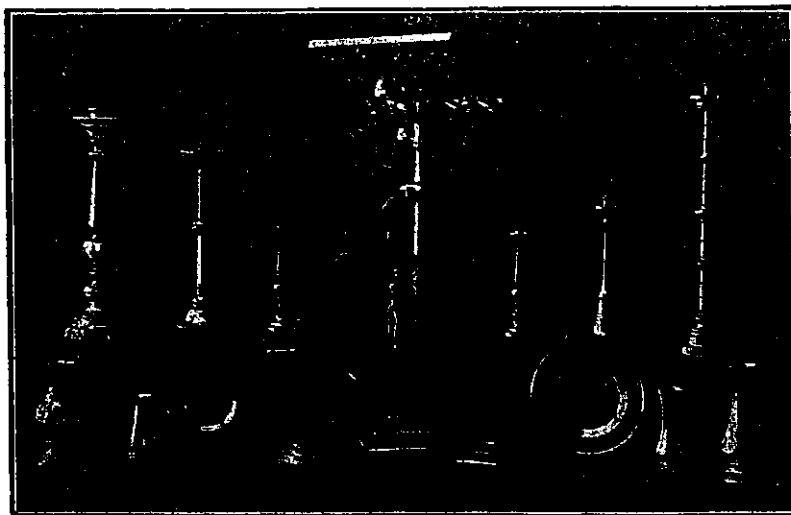
— FOR —

FURNITURE,
SEAGRASS FURNITURE,
BEDDING,
LINOLEUMS,
CARPETS, RUGS,
PRAMS, PUSH CHAIRS.

It Will Save You Money

SHOULD YOU REQUIRE
FURNITURE TO CALL ON US
OR SEND FOR PRICES.
QUALITY THE BEST.
PRICES REASONABLE.

BUTTERFIELD'S RIBBLE STREET, OAMARU
Phone 1617.



Established 1879. Telephone 688.
Telegraphic Address, "Pricebrass."

W. H. PRICE & SONS, LTD.

34-36 MANCHESTER STREET, CHRISTCHURCH.

Motor and Marine Engineers,
General Brassfounders, Etc.

SPECIALISTS IN—

Ecclesiastical Furnishings, Altar
Rails, Church Bells, and Orna-
mental Brass Work : : :

Prices on Application. Inspection Invited.

Wall Papers

At Prices that make the Buying Easy, from ALEXANDER OLARK and Co.
Freight Paid on all Goods. Write for Samples. 8 Fitzherbert Street, Palmerston North.