

Owens, Ltd.

The London Tailors

751 COLOMBO ST., CHRISTCHURCH
(opp. Careys)

MAKERS OF SMART SUITS

As we buy all materials direct from the manufacturers, and sell for cash only, we can, and do, save you money. Our 12 months' guarantee of absolute satisfaction goes with each garment.

JOHN RHIND

(Late Langlord and Rhind),

UNDERTAKER :: CHRISTCHURCH

P.O. Box 523.

Motor Hearse and Carriages for Funerals in Town and country.

106 Montreal Street, Sydenham, 'Phone 1608, 19
London Street, Richmond, 'Phone 689. Town
Office, 104 Cashel Street, 'Phone 812.

Note Our New Address

R. J. Stark & Co.,

"The Block," next to Herbert, Haynes, Ltd.

During the next three weeks we will be holding a GREAT REMOVAL SALE. Everything in stock reduced in price. Hundreds of Books at less than cost.

500 2/6 NOVELS AT 1/- EACH

200 6/- NOVELS AT 2/- EACH

1/6 WRITING TABLETS NOW 1/-

1/- WRITING TABLETS NOW 3 FOR 2/-

Call early and get some of these bargains.

The Bridge of Remembrance

being in course of construction, clients can reach our garage by crossing the Hereford Street Bridge. ALL REPAIR WORK GUARANTEED, and at the lowest rates. Only skilled workmen employed. Agents for Chandler, Cleveland, Lancia, and Pierce-Arrow Cars.

C. WRIGHT Bros., Ltd. 56 Cashel St. W., Christchurch
(opp. King Edward Barracks)

Low-Priced Corsets from Beath's Christchurch

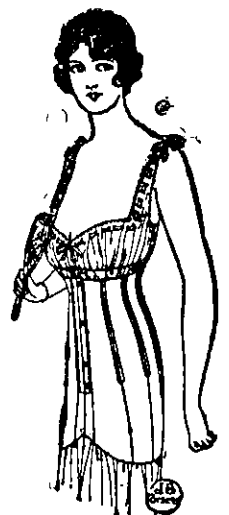
Splendid values—good fitting Corsets—well made—well boned—dependable in wear. Beath's have a low-priced Corset for practically every type of figure—for hard wearing, for sports, or for wearing with fashionable frocks.

Ladies' Corset of strong Coutil, in Grey or White; medium top, long over hips; lightly boned; two hose supports; sizes 22in. to 30in. 8/6

Ladies' J.B. Corset (Model 50) of light-weight Coutil, in White only; low top, long over hips; cut straight all round; lightly boned; four hose supports; suitable for the medium figure; sizes 23in. to 30in.— 8/11

Ladies' Corset of strong White Coutil; low top, long over hips; double skirt; lightly boned; suitable for the average figure; four hose supports; sizes 22in. to 30in.— 12/11

Ladies' Corset of strong White Coutil; medium top, medium length over hips; fitted with spiral steels—
Sizes 24in. to 30in. 10/11
Sizes 31in. to 33in. 12/11



Beath's pay postage on all goods except Heavy Furnishings, and give a Discount of 1/- in every complete £1 for cash.

BEATH'S, CHRISTCHURCH

Silver Rosary Rings, Prayer Books, and other objects of Catholic Devotion

We have just landed a new line of Silver each (post free). Also some nice lines of other O'Pearl, 12/6; Pink Cut Glass and 8 Rosary Beads—Cocotina, 7/6; Silver and M.Rosary Rings which we are selling at 4/- silver, 14/-, and 18/6; Jasper, 22/6; Agate, 13/6; Silver Bead Rosary, 32/6; Real Garnet Silver Gilt, 50/-.

H. P. CAMPBELL Consulting Optician, Watchmaker and Jeweller [opp Federal Bldgs.], Dee St., Invercargill