

## The Constituents of Wheat

BRAN (the outer covering) — Indigestible fibrous matter.

FLOUR MATERIAL — Starch and gluten, low in food value.

GERM (the embryo plant) — Containing vitamins and natural salts.

## White Bread

Is made from the starchy, glutenous portion of the wheat grain, containing NO Vitamins.

## Wholemeal Bread

Is the product of the complete grain, including bran and fibre, containing only 1.5 per cent. of Vitamins.

# PAVIS

## The Vitamine Bread

is made from selected white flour surcharged with added quantities of the "golden germ," increasing the vitamins by 20 per cent.

Ask your **BAKER** and **STOREKEEPER** for **PAVIS**

## Gretna Hotel

TAIHAPE.

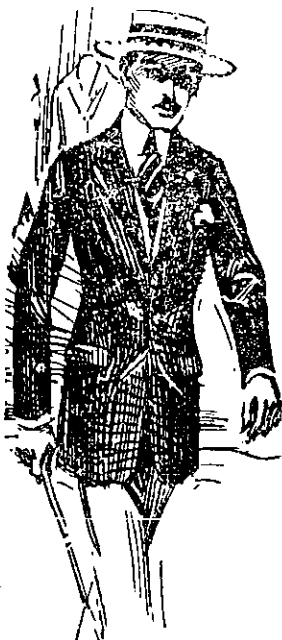
The most up-to-date Hotel on the Main Trunk Line.  
Electric Light throughout. First-class Table. Best of  
Ales and Spirits stocked.

J. QUIRK :: Proprietor.

## BOUSKILL,

THE LEADING MONUMENTAL MASON,  
SYMONDS STREET AUCKLAND

*Catalogues on Application*



### New

Yes, men, these are great values in

### Suits

They are tailored in two and three-button models for men and young men.

Well Finished in every way

Worsted and Tweeds in summer colorings at

£4 14s £5 5s £5 19s 6d

### TO COUNTRY PEOPLE

Send for our famous Self-Measurement Forms. We have Suit to fit you. We specialise in the making of Suits.

SCHNEIDEMAN & SONS,

Tailors,

86 Manners St. & Wanganui

## TO MY PEOPLE

(Lead, Kindly Light)

Doubtless you are aware England is now in the throes of her free trade policy—i.e., the open door. Prior to the war she was the receptacle for our enemies' goods and undesirables, thus allowing the latter to creep into every crevice of the Empire, to England's peril.

To remove past anomalies "Champion" suggests reasonable protection and a closed door to our enemies, which would enable England to be a much larger manufacturer, with better working conditions and wages for her workers, who have so nobly responded to the Empire's call.

Meantime—

Fortify on "CHAMPION" Muscle and  
Courage-Raiser Flour

I have spoken—V., AUCKLAND.

'PHONE 20-690.

[A CARD.]

**J. C. Twomey,**

DENTAL SURGEON

13A COURTNEY PLACE :: WELLINGTON.

**J. T. Mannix, A.N.Z.I.A.**

Registered Architect

Devon Street - New Plymouth

**H. GLOVER**

MONUMENTAL SCULPTOR, 59 KENT TERRACE, WELLINGTON. ————— 'Phone 3241.  
Reinforced Concrete Walls, Granite and Marble Kerbs. All kinds of Cemetery Work executed.  
Letter Cuttin a specialty.