

Salamander  
2 Oven Range

## Save Tons of Coal Every Month by Installing a SAAMANDER RANGE

CUTS FUEL COSTS FULLY 50 PER CENT.

A Salamander will soon pay for itself in fuel saved. Thoroughly efficient and most convenient.

Various types, to cook for any number from 20 to 1000 people.

Salamander Ranges are used with every success by the Defence Department, N.Z. Railways, Convents, Colleges, Hotels, etc.

Send Coupon to-day for catalogue and full particulars. Posted free by return.



POST  
THIS NOW  
To DOUGALL  
COOMBS and Co.,  
Limited,  
Dept. "T," Box  
992, WELLINGTON.

Please send me a copy of your FREE Catalogue, and any further particulars about Salamander Ranges.

**DOUGALL COOMBS, & CO., LTD.**  
SOLE MANUFACTURERS :: WELLINGTON

Name .....  
Address .....

VISITORS to the NEW ZEALAND and SOUTH SEAS  
EXHIBITION VISIT THE  
For Your LUNCHEON, MORNING and AFTERNOON  
TEAS and SUPPER.  
Quality, Service, and Satisfaction Guaranteed.

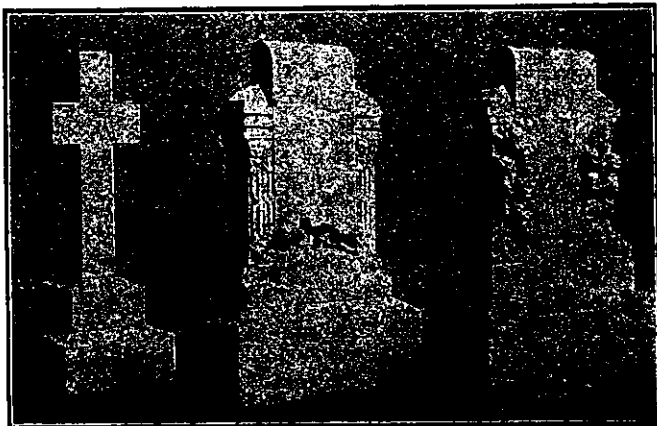
## "Oriental Caves" Cabaret

Moran's Buildings, THE OCTAGON, DUNEDIN

GREATLY REDUCED PRICES



7-£11/10/-      8-£12/10/-      9-£12



4-£5      Others from £3      5-£14      6-£14

## THOMSON & CO.

SCULPTORS

(Opp. FIRST CHURCH)

Moray Place, Dunedin

HAVE SOLD THEIR PREMISES AND ARE RETIRING FROM BUSINESS.



As the purchaser of the land requires possession at an early date, their large stocks of granite and marble Tombstones, Crosses, &c., must be sold regardless of price.

To those who have had their cemetery plots merely curbed, but owing to the high cost of marble and granite have delayed erecting a headstone, a rare opportunity of having their plots completed at a low cost is afforded.

Catholic Girl's Hostel

Visitors catered for. A Home away from Home. Also a few vacancies for permanent boarders. For particulars apply to THE MATRON, 245 CASHEL STREET,

Christchurch