

The best WINES in N.Z. are made at the Mission Vineyards, Greenmeadows

These wines, in the making of which the Marist Lay Brothers have been engaged for more than 40 years, are the product of the pure juice of the grape.

AWARDS:—Gold Medal, Paris Exhibition, 1889; Gold Medals, Christchurch Exhibition, 1906; Gold Medal, London Exhibition, 1909.

Postal Address—"MANAGER, MISSION, GREENMEADOWS."

Telegraphic Address—"MISSION, GREENMEADOWS."

Phoenix Assurance Company, Ltd.

Fire, Marine, Employers' Liability, Motor Car and Accident Insurance of all Descriptions.

'Phone 61.

D. J. CALDER, District Manager,
(N.Z. Express Co.'s Bldgs.)

Branches and Agencies throughout New Zealand.

BOND STREET, DUNEDIN

A.P.A.

THE AUSTRALIAN PROVINCIAL ASSURANCE ASSOCIATION, LTD.
(Fire, Marine, and Accident)

Now conducted by

Union Assurance Society, Ltd.

Controlling Agents Dunedin:

JOHN REID & SONS, LTD

Cr. BOND & LIVERPOOL STREETS,
DUNEDIN.

Southland Agents: COMPTON & CO.,
INVERCARGILL

A. J. HYDER, Superintendent for N.Z.

WM. P. LINEHAN BOOKSELLER AND STATIONER

BOURKE St. (near Spring St.), MELBOURNE.

Material for a History of Pope Alexander VI—His Relatives and His Time. By

Right Rev. Mgr. De Roo; 5 vols—63/-.

Christopher and Cressida. A new story by

Montgomery Carmichael—6/10.

The Lure of the West. A Romance of Ari-

zona and Ontario. By L. M. Wallace—9/6.

The Hidden Ireland. A study of Munster

in the 18th century. By Daniel Corkery.

16/10.

The Peasant Girl of Joigny: St. M. Sophie

Barat. By Elinor Wren—2/8.

Teaching the Catechism. A book for teachers

of children under 12 years. By the author

of "The Sower."—2/2.

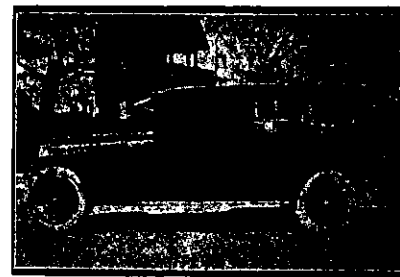
Twelve and After. A book for teachers of

older children—6/9.

In Christ Jesus. By Raoul Plus, S.J. Re-

vised edition—8/4.

All Post Free.



GEORGE DICKINSON FUNERAL FURNISHER AND EMBALMER

Oak and Rimu Caskets.

A New, Modern Establishment, with complete equipment for conduct of funerals in Christchurch or to any part of New Zealand.

Under management with twenty-five years experience.

LATIMER SQUARE, CHRISTCHURCH
Telephone 2539, Day or Night.

HOTEL CECIL WELLINGTON

J. McPARLAND : : Proprietor
Tariff on application.

NEW GLOVES At BEATH'S Christchurch

Beath's
pay
postage

Ladies' Gauntlet Velve Mocha Gloves, with side and top fringe. Beaver & Chamois 29/6 pr.

Ladies' Elastic Wrist Gauntlet Gloves, in French Suede, washable. Pastel and Light Grey 25/6 pr.

Ladies' Mocha Gauntlet Gloves, in Fawn and Grey 23/11 pr.

Ladies' Deerskin Gauntlet Gloves, with contrast lacings. In Grey & Nigger 25/6 pr.

Ladies' Doeskin Gauntlet Gloves, with embroidered cuff. In Chamois, Beaver and Light Grey 18/6 pr.

Ladies' 2-Dome Silk-lined Suede Gloves, in Mole 25/6 pr.

Ladies' Short Fancy Gauntlet Deerskin Gloves. In Dark Grey 16/6 pr.

Ladies' Gauntlet Mocha Gloves, with side fringe Beaver shade—21/- pr.

G. S. Bruce & Co. Sheep Stations, Dairy Farms, Town and Suburban properties for sale or exchange in all parts of Poverty Bay, Opoiki, Whakatane, and Auckland. Inquiries invited, inspections arranged, and valuations made. Country rep., G. S. Bruce; town rep., J. H. Jones. Telephone—Office, 526; G. S. Bruce (private), 1107; J. H. Jones (private), 1180. Gisborne G.P.O. Box, 40. G. S. Bruce and Co.