

Our New Season's Stock of Spring Piece Goods Comprises all that is fashionable in Cotton and Silk Dress Fabrics

30in Check Zephyrs, in smart effects—	10yd. Double width plain and check Zephyrs—	1/6 yd.
Double Width Cotton Taffeta, in smart colourings—		2/3, 3/6.
Double width Plain Marocains, in Almond, Apricot, Sky, Helio, Grey, Champ		2/9.
Double width Nursery Washing Fabric, useful for children's frocks (all colours)		3/3.
Double width new stripe Tricolene, in smart effects		5/11
30in Washing Crepe, in a large variety of popular shades		1/6
38in Duchesse Mousseline Silk, in Lemon, Saxe, Grey, Apricot, Navy, Almond, Fawn,		
DK Saxe, Royal Brown, Helio		10/6

Patterns forwarded upon application.

F. & R. WOODS, Ltd, 11, 13, 15, Princes St., Dunedin

AGENCIES:

Bell,  
Swift,  
and  
Falcon  
Bicycles.

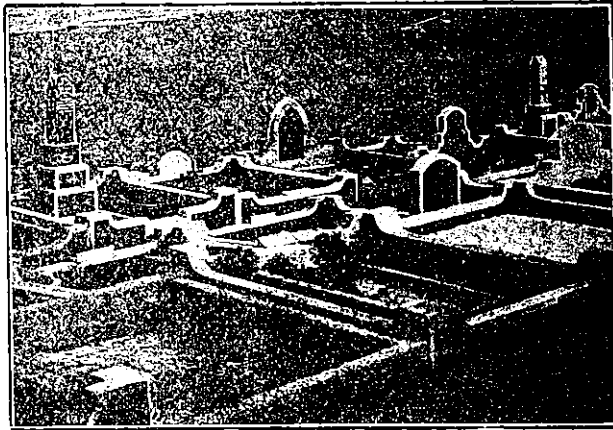
Telephone 146

**R. A. Rodgers**

MOTOR AND CYCLE IMPORTER  
Stafford Street, Timaru  
Thames Street, Oamaru

AGENCIES:

Harley-Davidson,  
Humber,  
A.J.S., and  
Rudge  
Motor Cycles.

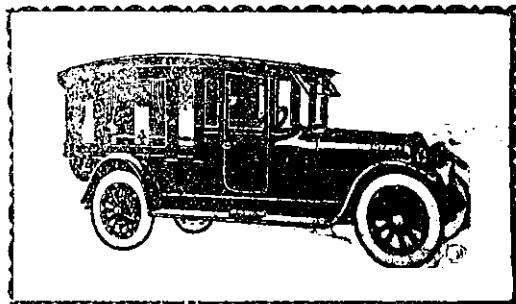


**Monumental Sculptor  
and Designer**

Monuments and all cemetery work a specialty. Work undertaken in town or country. Estimates given. Charges moderate

**A. E. TILLEYSHORT**

TOMAHAWK ROAD (Opp. Anderson's Bay Cemetery)  
Phone 7158] DUNEDIN [Phone 7158



LATEST MOTOR HEARSE & CARRIAGES

**George Dickinson**

Funeral Furnisher and Embalmer

OAK AND RIMU CASKETS.

A New, Modern Establishment, with complete equipment for conduct of funerals in Christchurch or to any part of New Zealand.

Under Management with twenty-five years' experience.

**LATIMER SQUARE, CHRISTCHURCH**

Telephone 2539, Day or Night

People Drinking **BALLIN BROS.' SARSAPARILLA**  
are **ALWAYS Well.** *There's a Reason!*

When visiting **ROTORUA**, stay at **"THE MANSIONS"**  
and secure the Comfort and Refinement of a Superior Home. **TERMS MODERATE. FRED REEVE, Proprietor**