

## OUR WINTER SALE NOW IN FULL SWING

With Stocktaking approaching Stocks must be reduced even at a sacrifice

LADIES' WARM WINTER COATS IN GOOD WARM RELIABLE MATERIALS—USUALLY 5 AND 6 GUINEAS, TO CLEAR AT 29/6 EACH.

All New Season Millinery to be Cleared at SALE PRICES

### SPECIAL—

54 inch ALL WOOL DRESS TWEEDS IN SMART CHECK SKIRT EFFECTS. USUALLY 12/6. SALE PRICE 3/6.

## F. & R. WOODS LTD.

11, 13, 15 Princes Street

DUNEDIN

### AGENCIES:

Bell,  
Swift,  
and  
Falcon  
Bicycles.

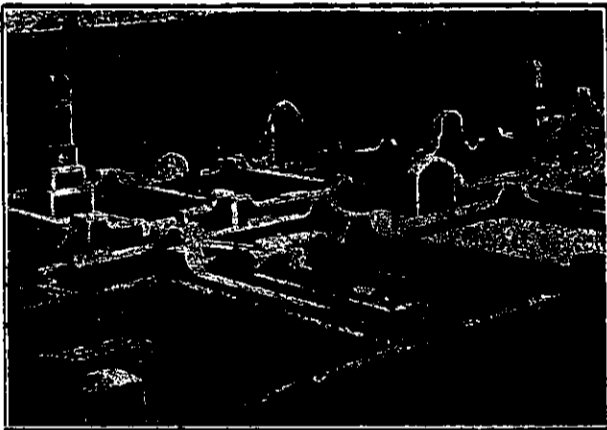
Telephone 146

## R. A. Rodgers

MOTOR AND CYCLE IMPORTER  
Stafford Street, Timaru  
Thames Street, Oamaru

### AGENCIES:

Harley-Davidson,  
Humber,  
A.J.S., and  
Rudge  
Motor Cycles.



## Monumental Sculptor and Designer

Monuments and all cemetery work a specialty. Work undertaken in town or country. Estimates given. Charges moderate

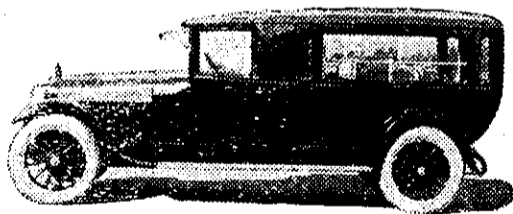
### A. E. TILLEYSHORT

TOMAHAWK ROAD (Opp. Anderson's Bay Cemetery)

Phone 7158]

DUNEDIN

[Phone 7158



Latest Motor Hearse & Carriages

## George Dickinson

Funeral Furnisher and Embalmer

OAK AND RIMU CASKETS.

A New, Modern Establishment, with complete equipment for conduct of funerals in Christchurch or to any part of New Zealand.

Under Management with twenty-five years' experience.

**LATIMER SQUARE, CHRISTCHURCH**

Telephone 2539, Day or Night

People Drinking **BALLIN BROS.' SARSAPARILLA**  
are **ALWAYS Well.** **There's a Reason!**

## S. F. ABURN

IMPORTER of Paints, Oils, Colors, Varnishes, etc., 215 PRINCES STREET, DUNEDIN.  
Painter, Paperhanger, Glazier. Brushware, Paperhangings, Picture and Room Mouldings,  
Sheet (Plate) and Colored Glass, etc. Telephone 1820.