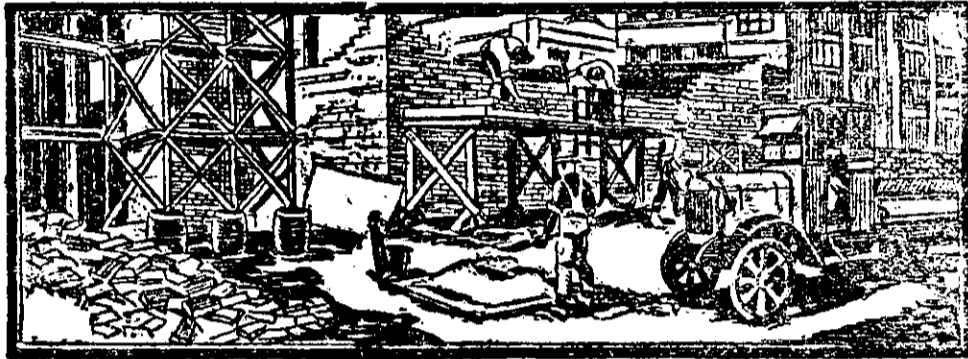


Our Forests are Depleted—Timber is Scarce

Millions of Bricks

Are used to-day for building in New Zealand, while owing to timber shortage and increasing building needs, the cry goes up for still greater supplies. That is why the manufacture of bricks is one of our most solid industries, of great national importance, and bring each year large dividends to those engaged in it.



Brick manufacture in New Zealand is immensely profitable to its shareholders; yet the increasing requirements of the country are such that, with ADEQUATE SUPPLIES OF GOOD BRICK-MAKING CLAYS, the scope for the large modern plant is practically without limit. This entails the provision of thoroughly modern machinery and THE ADOPTION OF THE MOST EFFICIENT AND ECONOMICAL METHODS OF MANUFACTURE. In the discovery and exhaustive investigations of the new clay deposits at Waitakere in almost unlimited quantity, close to rail and within an hour from Auckland, the first requirement has been met.

The Waitakere Brick and Tile Co., Ltd.
(To be Incorporated)

Is now being formed for the erection and equipment of the finest modern Brick and Tile-Making Plant in New Zealand, and the manufacture of bricks on a scale large enough to ensure satisfaction of existing demands. And so the opportunity is being thrown open to the public to invest in what is probably the most profitable industry in the Dominion.

90,000 £1 SHARES ARE BEING ISSUED, and applications are now being receive by the Brokers:

SURF DALE ESTATES Ltd.

154 QUEEN STREET, AUCKLAND. Telegrams: "Surfdale Estates, Auckland."
Telephone 3304.

The Prospectus of the Company, with Form of Application for Shares and a handsomely Illustrated Booklet, will be sent to inquirers by return mail.

The PROVISIONAL DIRECTORS are:—

FREDK. FITCHETT, Esq., C.M.G., Barrister, Auckland. ERNEST ARTHUR CRAIG, Esq., Merchant Auckland. ROBERT HENRY ABBOTT, Esq., Retired Merchant, Auckland. JAMES LEWIS CONNETT, Esq., Settler, Auckland. WILLIAM DAVID ANDERSON, Esq., Solicitor, Auckland.

Fill in, cut out, and send this coupon to Surfdale Estates, Ltd., 154 Queen Street, Auckland.

Brokers to the Waitakere Brick and Tile Co., Ltd. (to be incorporated).

Without any obligation on my part please send to me by return mail your illustrated booklet, *Money in Modern Brick and Tile Manufacture*, and Prospectus of the Waitakere Brick and Tile Co., Ltd. (to be incorporated).

Name

Address

Date

