

J. M. J.

SACRED HEART COLLEGERICHMOND ROAD, AUCKLAND.
Conducted by the MARIST BROTHERS.(Under the Patronage of the Right Rev. Dr. Cleary,
Bishop of Auckland.)

THE COLLEGE, which is large and commodious, and fitted with all modern appliances, is situated in a section of ground 14 acres in extent.

The great object of the Brothers is to give their pupils a sound Religious Education, and so to enable them to discharge the duties of their after-life with honor to religion, benefit to the State, and credit to themselves.

Students are prepared for the Intermediate, Junior, and Senior Public Service, Pharmacy Board, Matriculation, Solicitors' General Knowledge, Medical and Engineering Preliminary, Military Scholarship, University Entrance Scholarship, and Music Examinations.

Special attention is given to Experimental Science and to Practical Agriculture.

TERMS: 40 GUINEAS PER ANNUM.

A reduction of 10 per cent. is allowed in favor of brothers.
For further particulars apply to the

BROTHER DIRECTOR.

AUSTRALIAN CATHOLIC TRUTH SOCIETY For the dissemination of Catholic Truth and the defence of Holy Church, 296 penny pamphlets on most interesting and instructive subjects have already been issued. An Australian Catholic Prayer Book has been compiled, and can now be procured in boards, 6d in popular size; leather (with Epistles and Gospels of Sundays and Feasts), 1/6; and beautifully bound in morocco, 3/6. Subscription, 5/- per annum, entitling all to the penny publications issued during the year. Life members, £3 3/-.
REV. J. NORRIS, SECRETARY, DRYBURGH ST., NORTH MELBOURNE.
Wholesale Depot, 312 Lonsdale St., Melbourne.**St. Patrick's College**
WELLINGTON

Conducted by the MARIST FATHERS, under the Distinguished Patronage of His Grace Archbishop Redwood, S.M.

For Terms, etc., apply to

THE RECTOR.

SCURR & NEILL

(Late C. N. Scurr)

BARRISTERS AND SOLICITORS,
PRINCES ST.—NEAR OCTAGON—DUNEDIN.
TELEPHONE 1724.

A. G. NEILL.

E. O'CONNOR

THE CATHOLIC BOOK DEPOT, CHRISTCHURCH

Authorised Enthronement Picture and Consecration to the Sacred Heart—Beautifully illuminated (18in. x 12in)—with space for names of parents and children, also signature of priest—1/6; 15/- doz.

Codex Juris Canonici—32/-; abridged, £1.

Practical Aspects (New Code) of Canon Law—7/-.

Marriage Legislation (New Code), Ayrinhac—10/8.

Religious Profession (New Code), Papi, S.J.—5/-.

Religious Communities of Women (New Code)—3/-.

The Unfolding of the Little Flower (Cunningham)—7/6.

Sermons on Our Blessed Lady (Flynn)—10/6.

BOOK LISTS ON APPLICATION.

Kingsland & Ferguson

(Established 1881)

Undertakers and Monumentalists**Undertaking Branch**
(Third Block in Spey St.)

'Phones:

Day, 126. Night, 1178, 789.

Funerals conducted to and from any part of Southland. Messages by telegram or otherwise promptly attended to.

Charges Strictly Moderate.

GRANITE AND MARBLE MEMORIALS of all descriptions in stock.

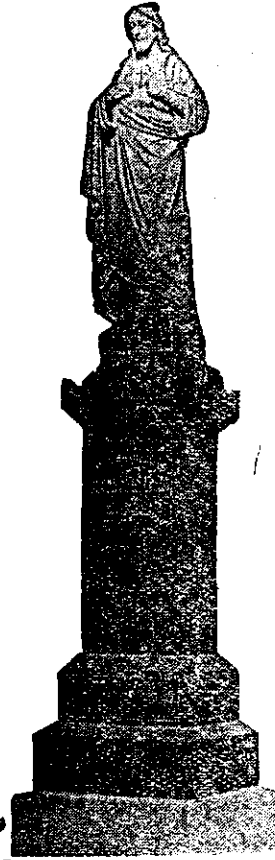
Estimates given for Altars, Statues, Fonts, and all classes of CHURCH WORK.

Monumental Works

C/R MAIN & IRWELL STS., GORE,

And DEE ST. (Tel. 187)
(Opp. Reid & Gray),

INVERCARGILL.

**AMBROSE DUNNE, St. Joseph's Cathedral, Dunedin.**

Has in stock extra superior quality Sanctuary Oil, very best Floats, Rosaries, and Prayer Books, including St. Joseph's Prayer Book 1/10 and 7d, St. Anthony's Treasury 2/6, Aluminium Medals 3d, and beautiful Pictures (6in x 3in) of St. Roch 3d. Catholic requisites forwarded on request.

Money to Lend

On Approved Securities.

Francis G. O'Beirne

SOLICITOR

DEE STREET INVERCARGILL.

The

**Provincial Ecclesiastical Seminary of New Zealand,
HOLY CROSS COLLEGE, MOSGIEL**

IN conformity with arrangements made at the First Provincial Synod, held in Wellington in 1899, this Seminary has been established for the Education of Students from all parts of New Zealand who aspire to the Ecclesiastical State.

Students 12 years of age and upwards will be admitted.

Candidates for admission are required to present satisfactory testimonials from the parochial clergy, and from the Superiors of Schools and Colleges where they may have studied.

The Pension is £35 a year, payable half-yearly in advance. It provides for Board and Lodging, Tuition, School-Books, Furniture, Bedding, and House Linen.

The Extra Charges are: Washing, £1/10/- a year; and Medicine and Medical Attendance if required.

Students will provide their own wearing apparel, including the Soutane, as well as Surplice for assistance in Choir.

The Seminary is under the patronage and direction of the Archbishops and Bishops of New Zealand, and under the immediate personal supervision of the Right Rev. Bishop of Dunedin.

Donations towards the establishment of Bursaries for the Free Education of Ecclesiastical Students will be thankfully received.

The Course of Studies is arranged to enable Students who enter the College to prepare for Matriculation and the various Examinations for Degrees at the University.

For further particulars apply to

THE RECTOR.

WARD & CO.

BUILDERS and CONTRACTORS, PAINTERS and PAPERHANGERS, HARDWARE and TIMBER